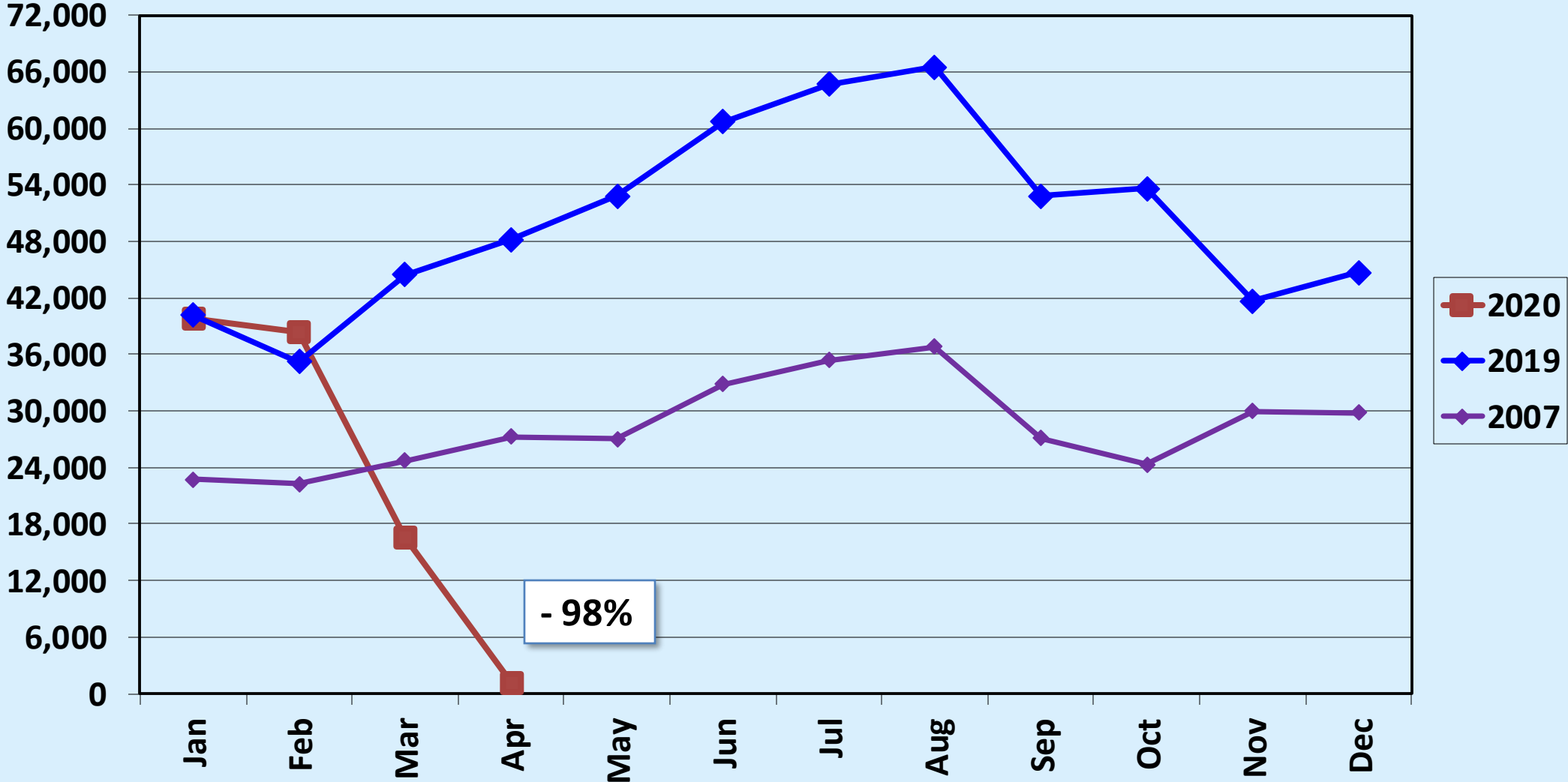




Passenger Statistics Report April 2020

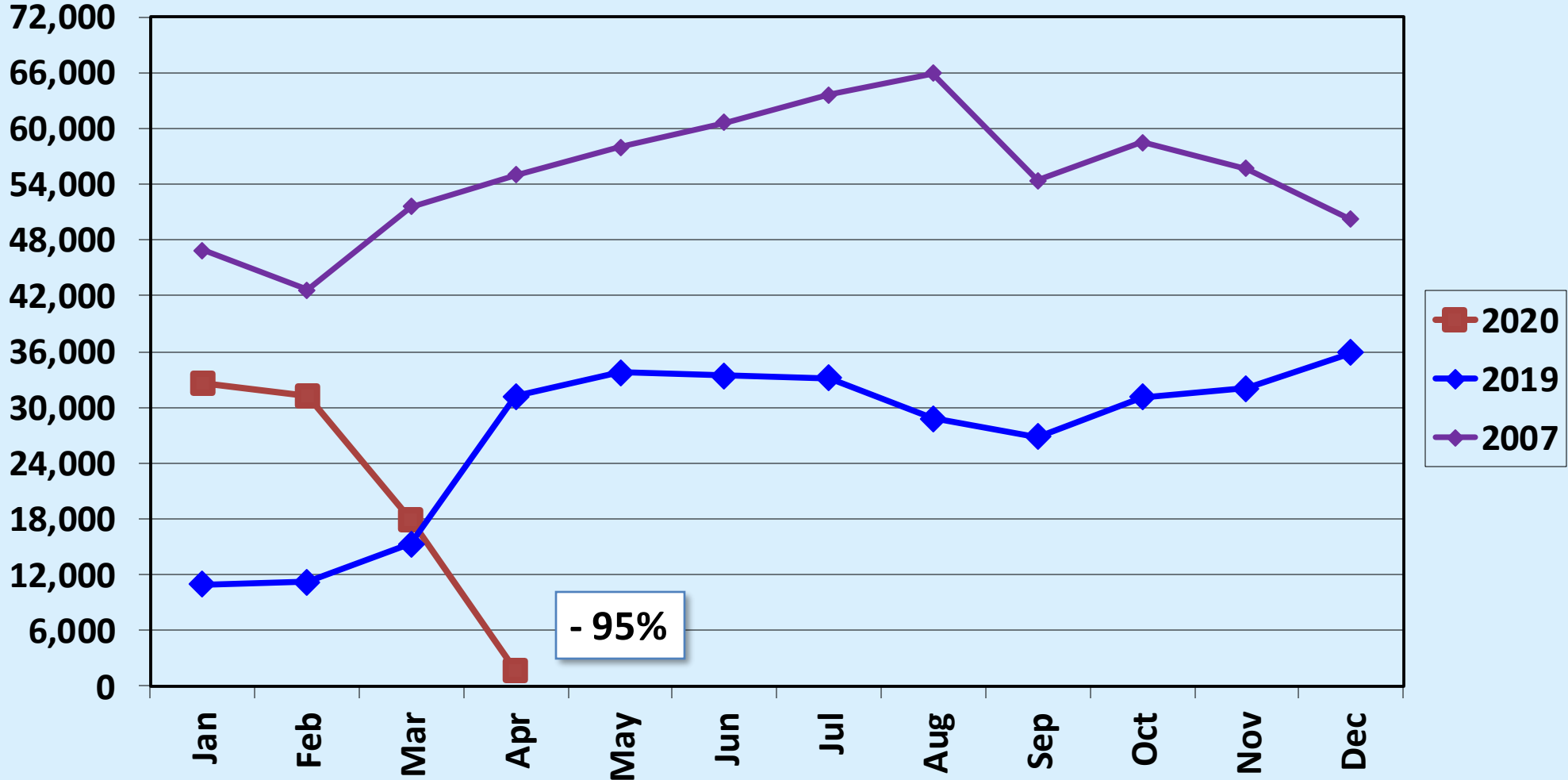
Presented to
Burbank-Glendale-Pasadena
Airport Authority
June 1, 2020

Revenue Passengers Alaska Airlines

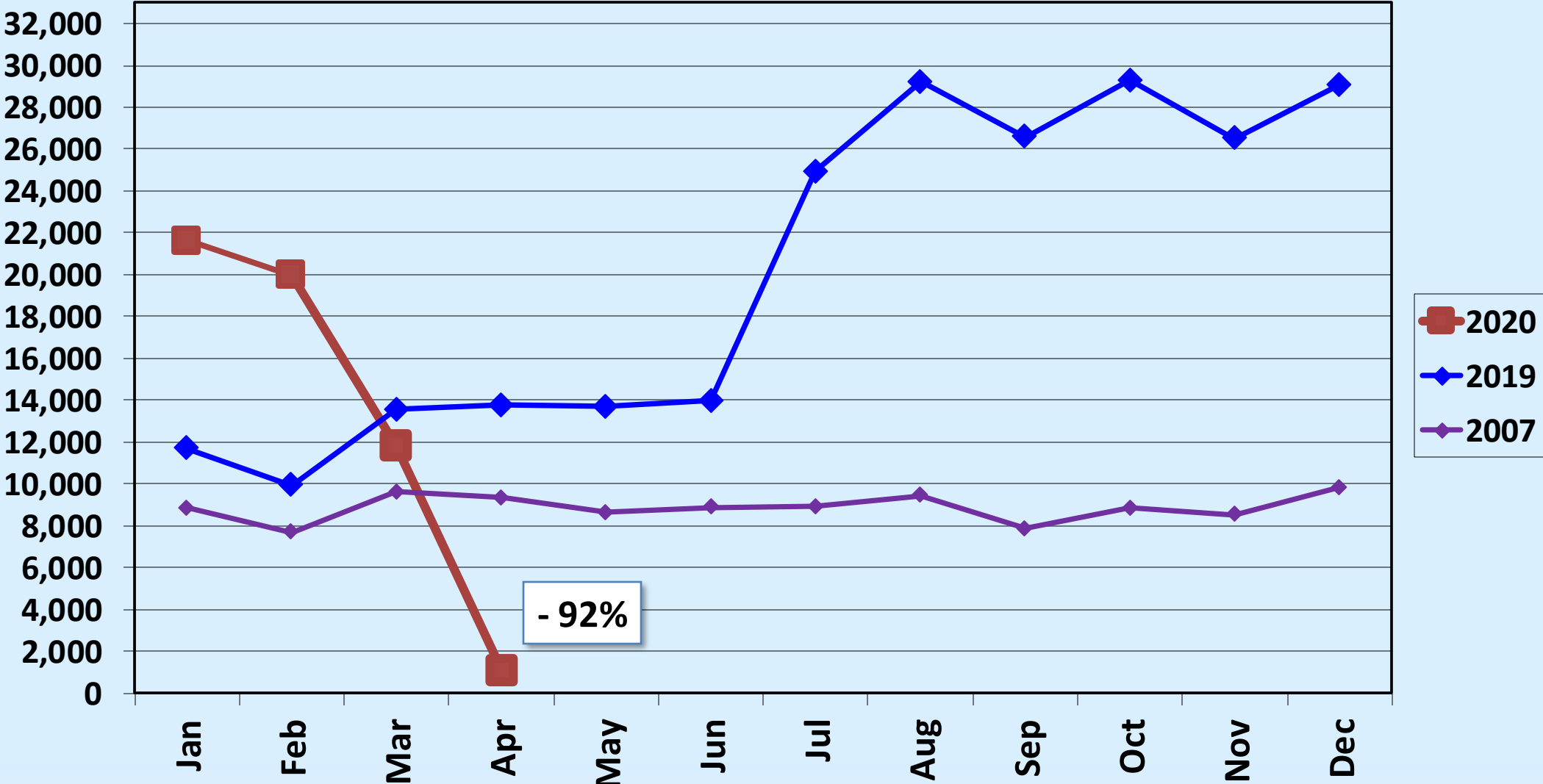


Revenue Passengers American Airlines

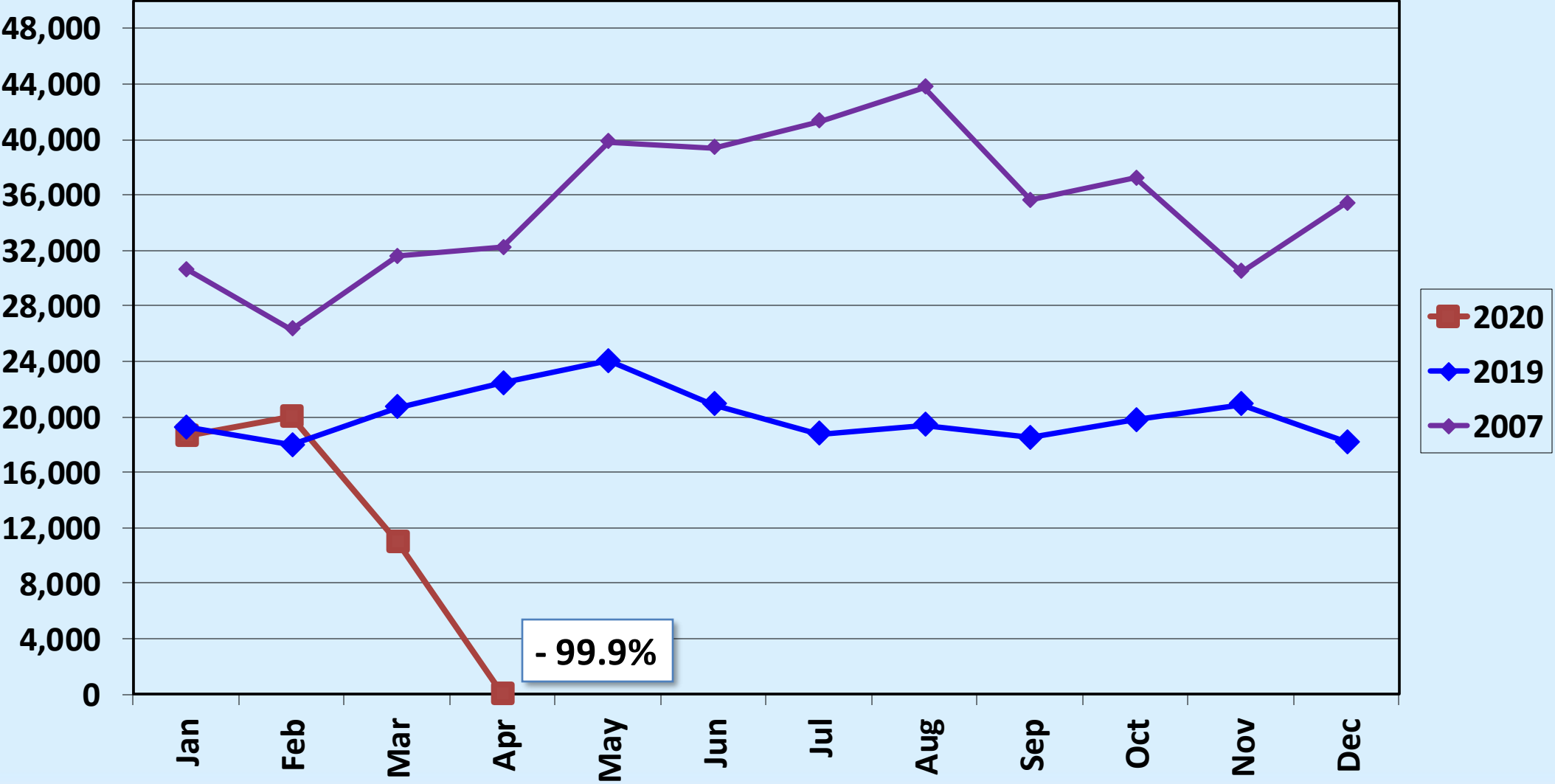
Note: For the purposes of this comparison, American Airlines in CY 2007 includes US Airways/America West.



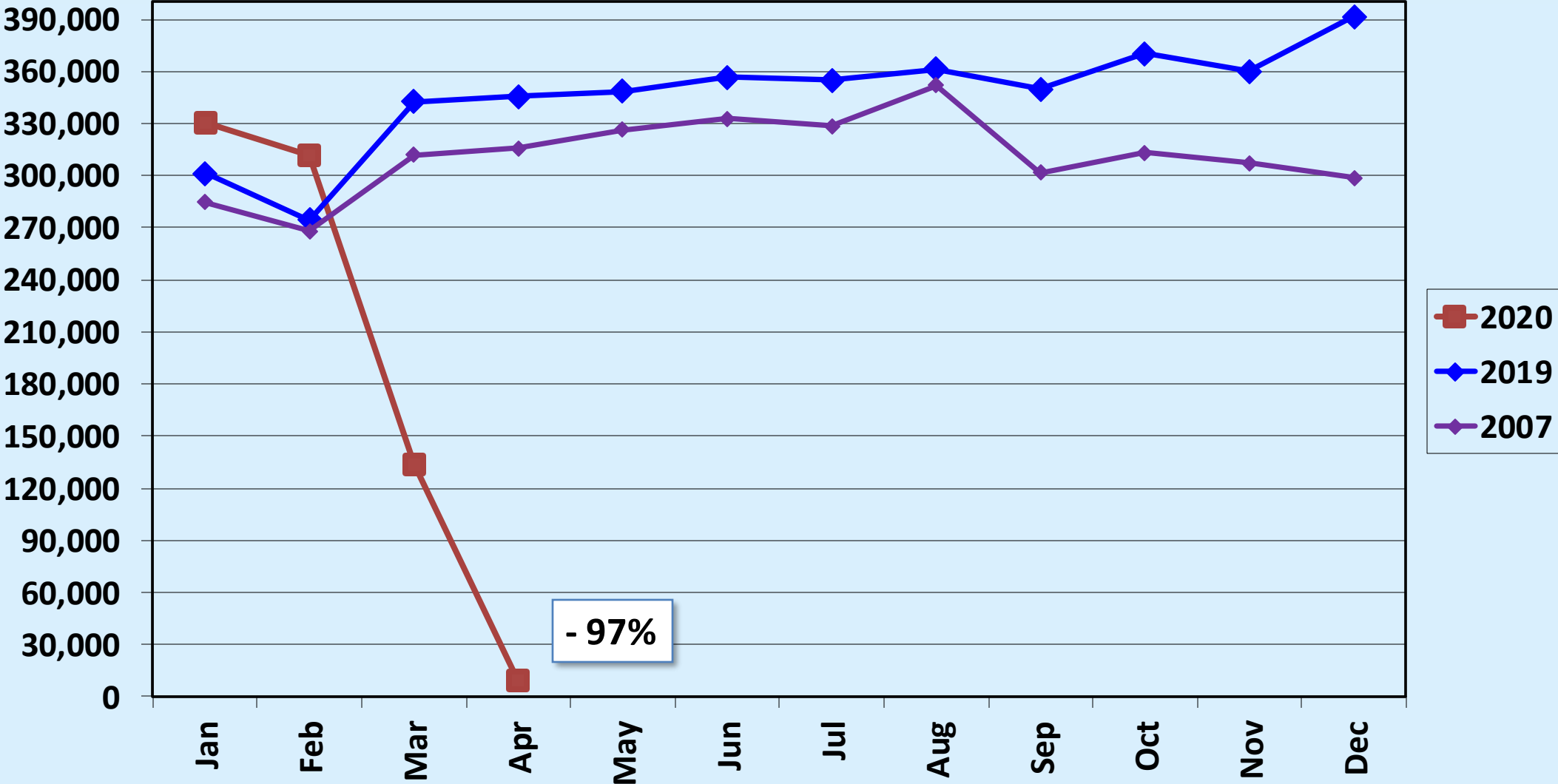
Revenue Passengers Delta Air Lines



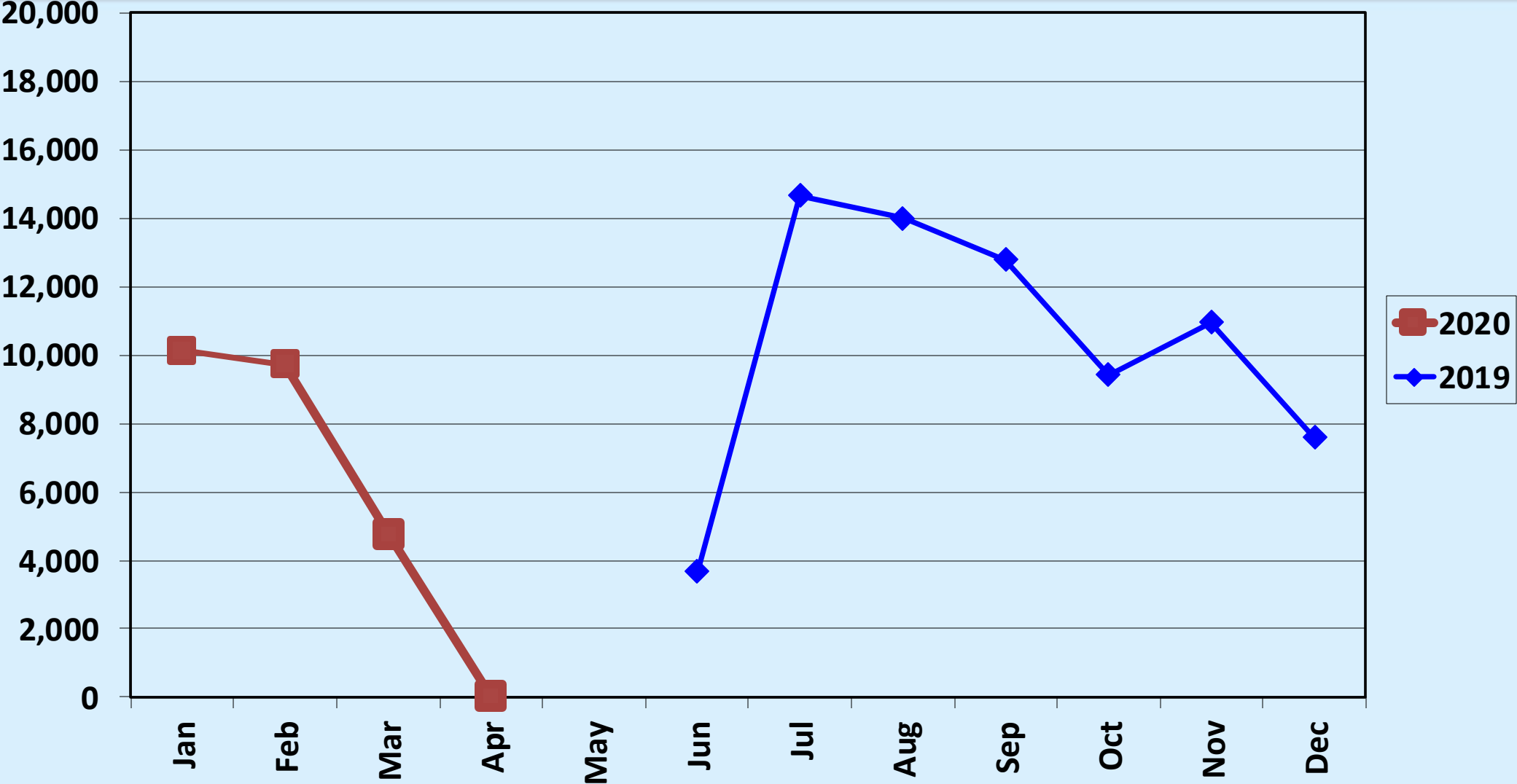
Revenue Passengers JetBlue Airways



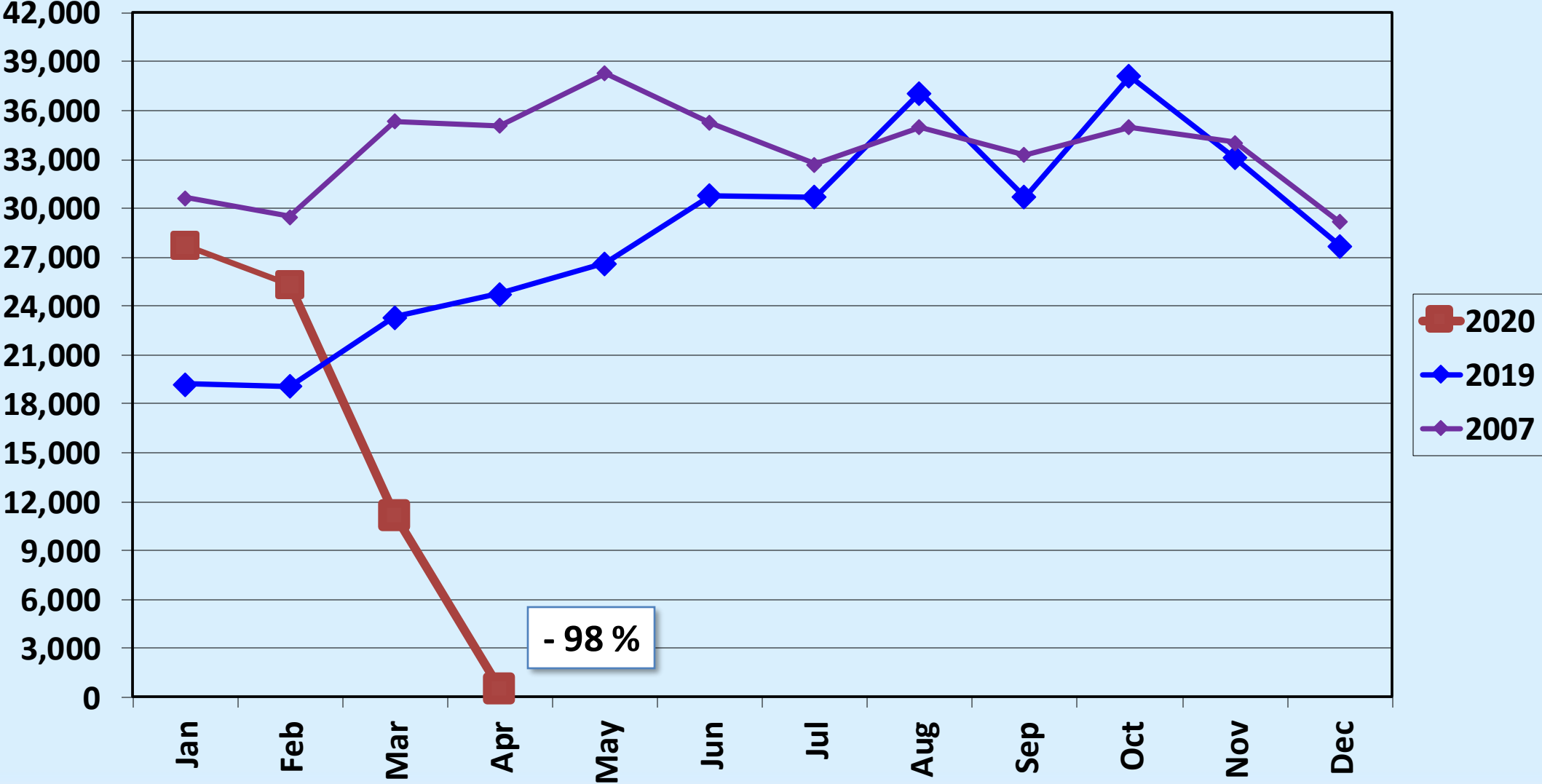
Revenue Passengers Southwest Airlines



Revenue Passengers Spirit Airlines

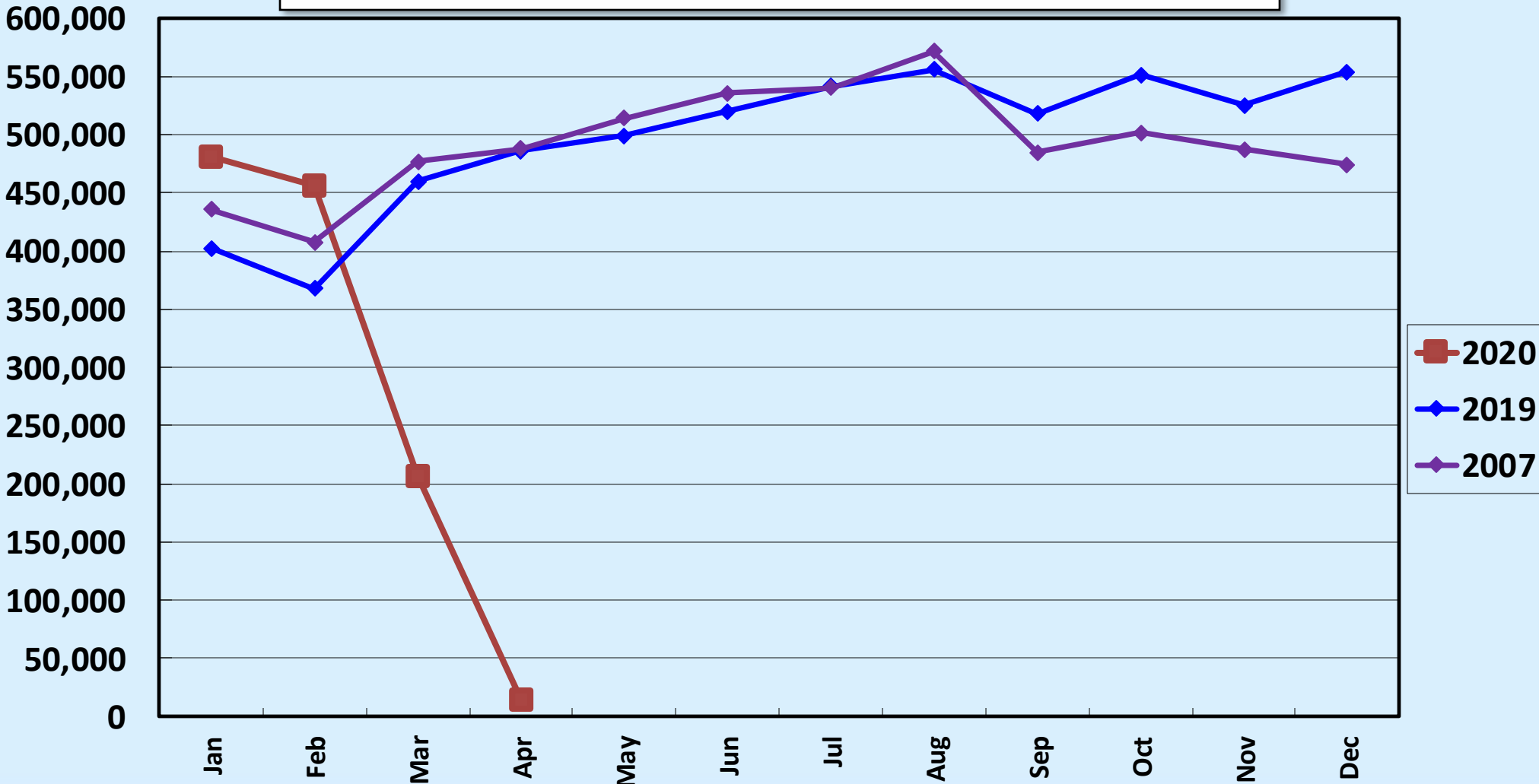


Revenue Passengers United Airlines



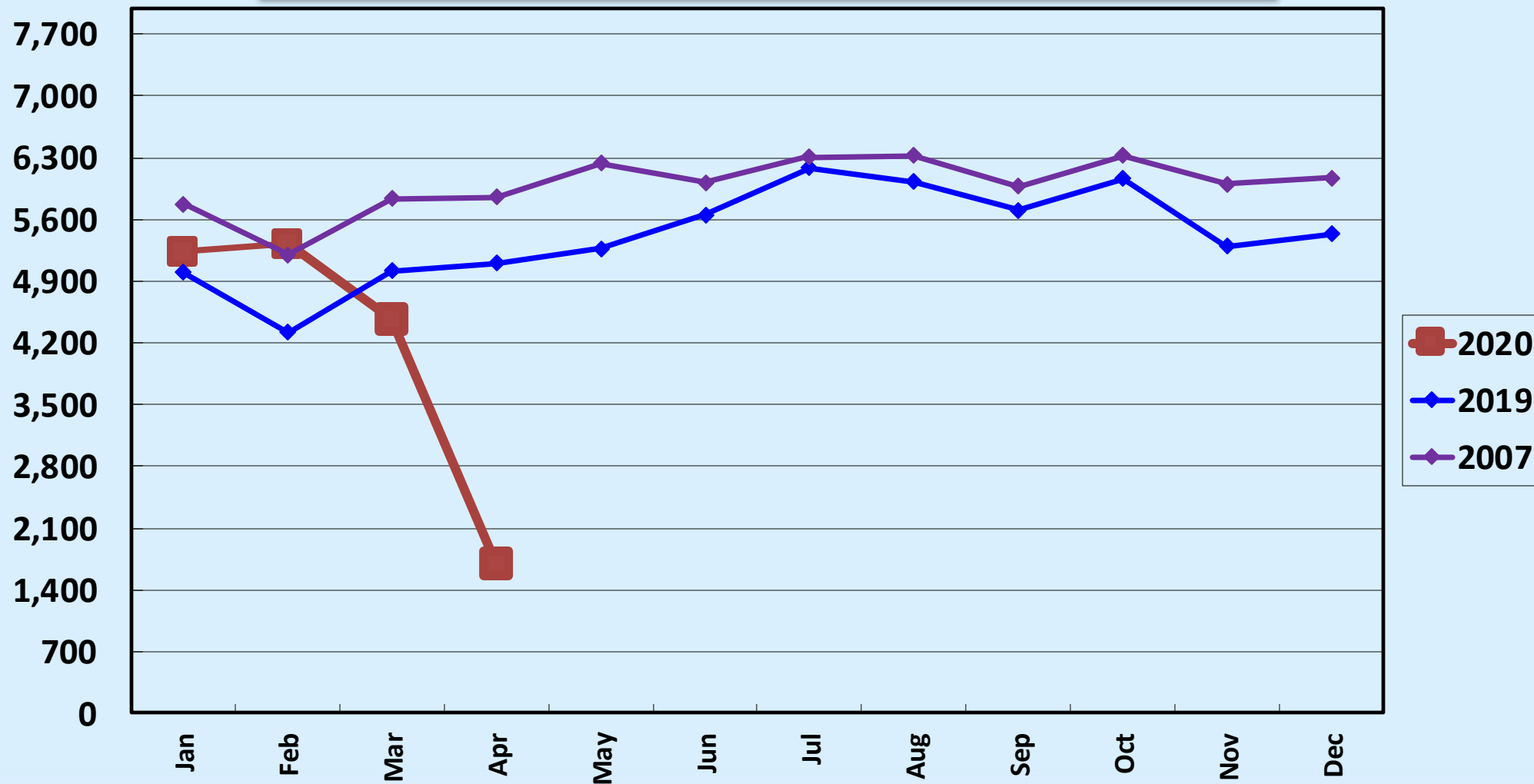
Revenue Passengers All Airlines

APRIL 2020: - 97.11% MOM; - 1.53% FYTD; - 32.52% CYTD



Air Carrier Operations All Airlines

APRIL 2020: - 66.80% MOM; + 5.70% FYTD; - 13.96% CYTD



Load Factor: April 2020 v. April 2019

	April 2020		April 2019	
Alaska	Seats: 8,008 Pax: 1,179	Load Factor: 14.72%	Seats: 57,812 Pax: 48,190	Load Factor: 83.36%
American	Seats: 14,488 Pax: 1,670	Load Factor: 11.53%	Seats: 35,978 Pax: 31,145	Load Factor: 86.57%
Delta	Seats: 9,804 Pax: 1,044	Load Factor: 10.65%	Seats: 16,416 Pax: 13,756	Load Factor: 83.80%
JetBlue	Seats: 1200 Pax: 25	Load Factor: 2.08%	Seats: 25,800 Pax: 22,464	Load Factor: 87.07%

Load Factor: April 2020 v. April 2019

April 2020

April 2019

Southwest

Seats: 153,578

Pax: 9,577

Load Factor:

6.24%

Seats: 460,674

Pax: 345,728

Load Factor:

75.05%

Spirit

Seats: 364

Pax: 21

Load Factor:

5.77%

Seats: 0

Pax: 0

Load Factor:

N/A

United

Seats: 7,864

Pax: 526

Load Factor:

6.69%

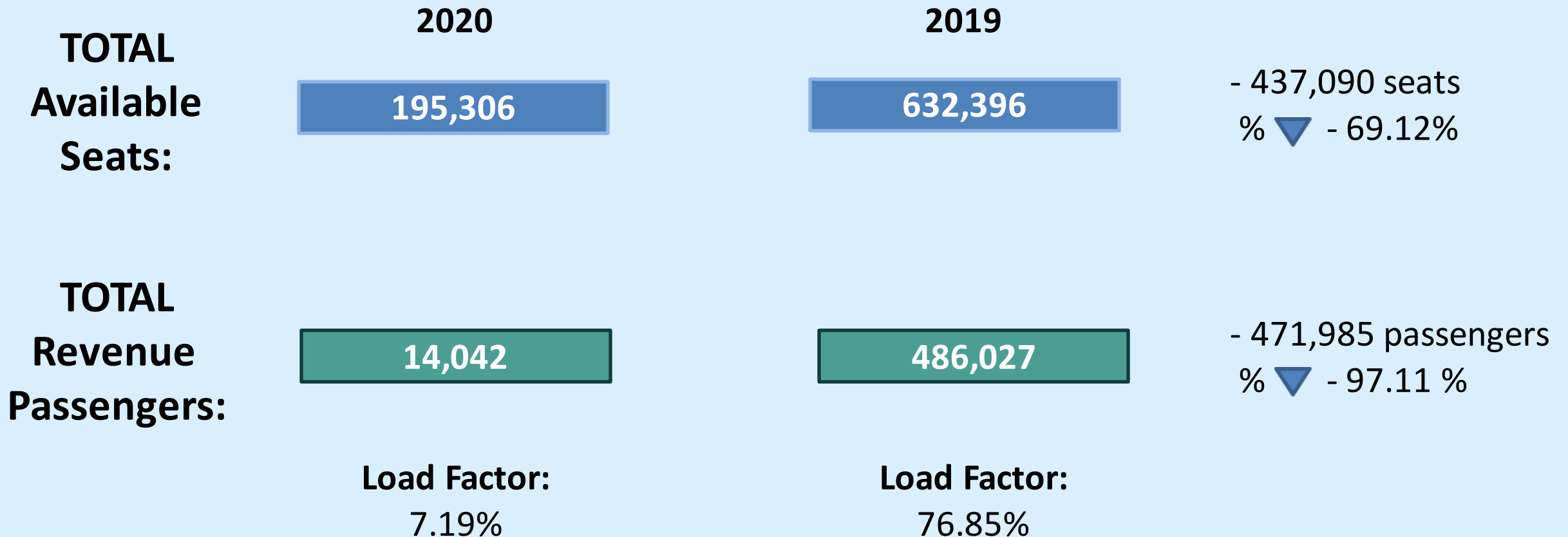
Seats: 35,716

Pax: 24,744

Load Factor:

69.28%

Load Factor: April 2020 v. April 2019



Regional Airport Passenger Statistics

April 2020

BUR

2020	14,042
2019	486,027
%▼	- 97.11%

ONT

2020	28,916
2019	444,948
%▼	- 93.50%

SNA

2020	25,313
2019	899,186
%▼	- 97.18%

LAX

2020	299,364
2019	7,233,370
%▼	- 95.86%

LGB

2020	*
2019	296,941
%▼	%

**Data not available as of 5/27/2020*

AIR CARRIER OPERATIONS

ALL AIRLINES

BREAKDOWN - MONTHLY TOTALS

	JAN	FEB	MAR	APR	MAY	JUN	JUL	AUG	SEP	OCT	NOV	DEC
2020	5,231	5,319	4,472	1,695								
2019	4,996	4,315	5,015	5,104								
2018	4,646	4,163	4,673	4,665								
2007	5,777	5,203	5,834	5,857								