



# Passenger Statistics Report April 2022

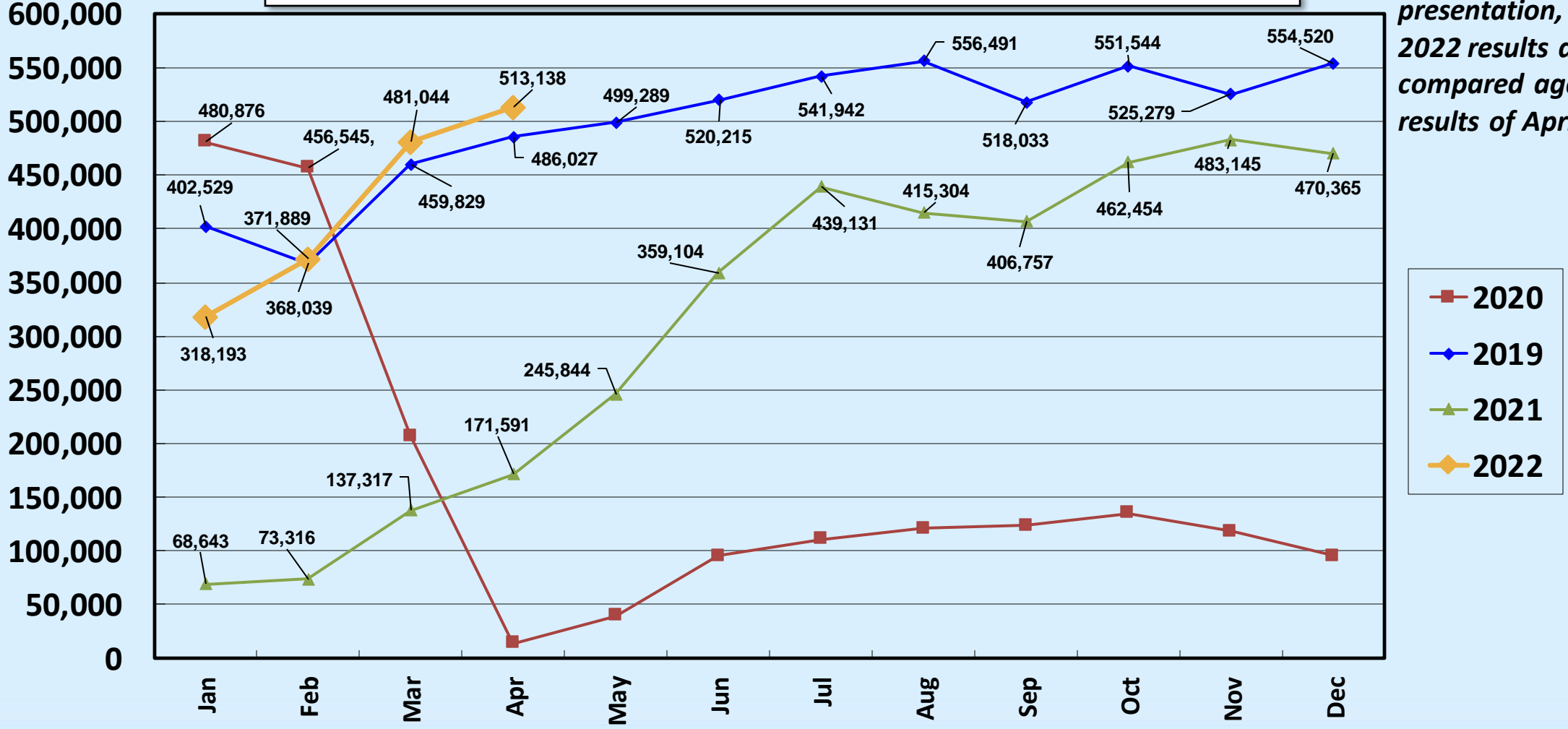
Presented to  
Burbank-Glendale-Pasadena  
Airport Authority  
June 20, 2022

Nerissa Sugars, Director  
Communications and Air Service

# Revenue Passengers All Airlines

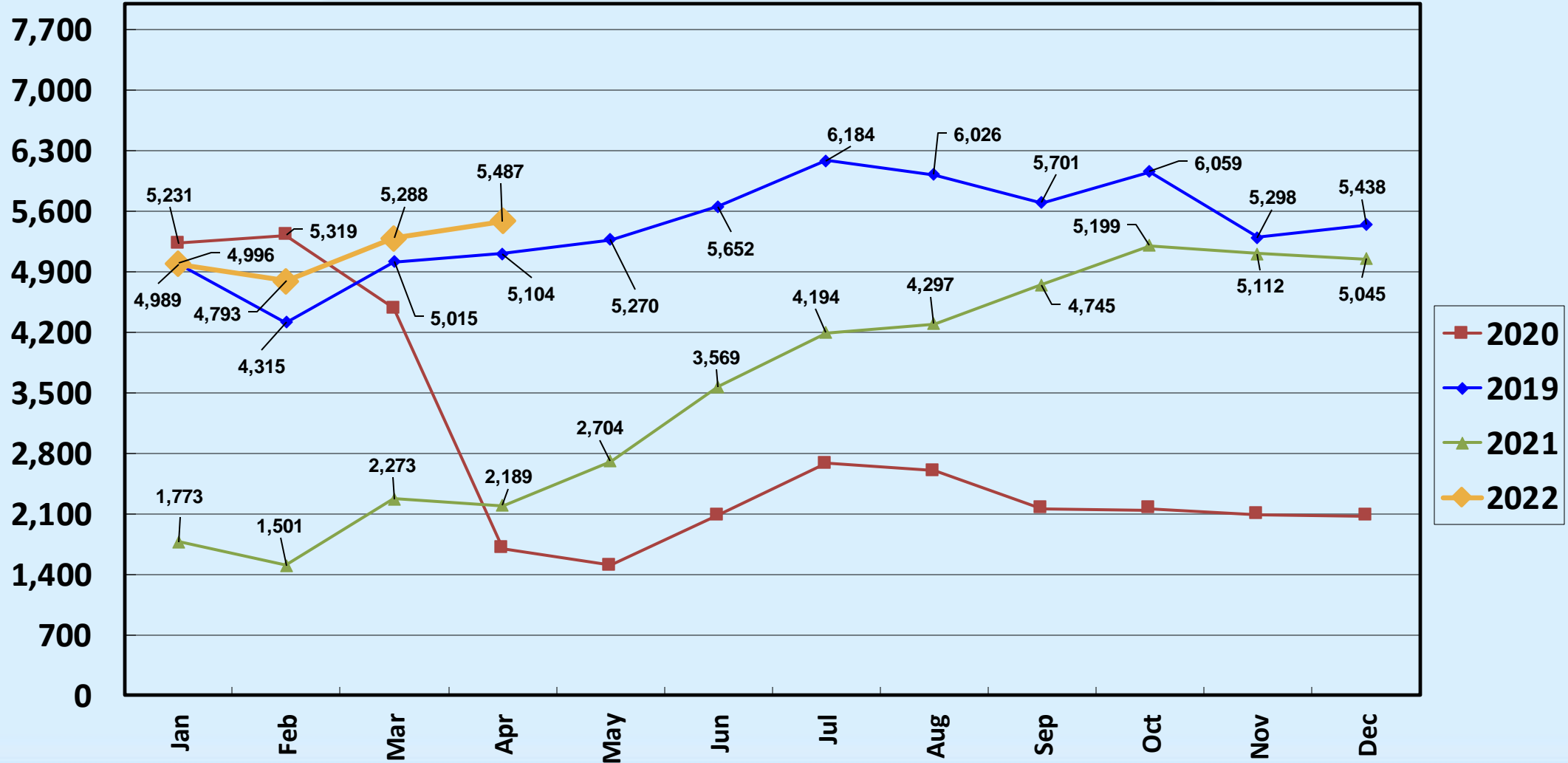
**April 2022: + 5.58% MOM; Budget Assumption: - 45.00%;  
Fiscal Year to Date: - 15.00%; Budget Assumption: - 55.50%**

*Note: For the purposes of comparison in this presentation, April 2022 results are compared against the results of April 2019.*

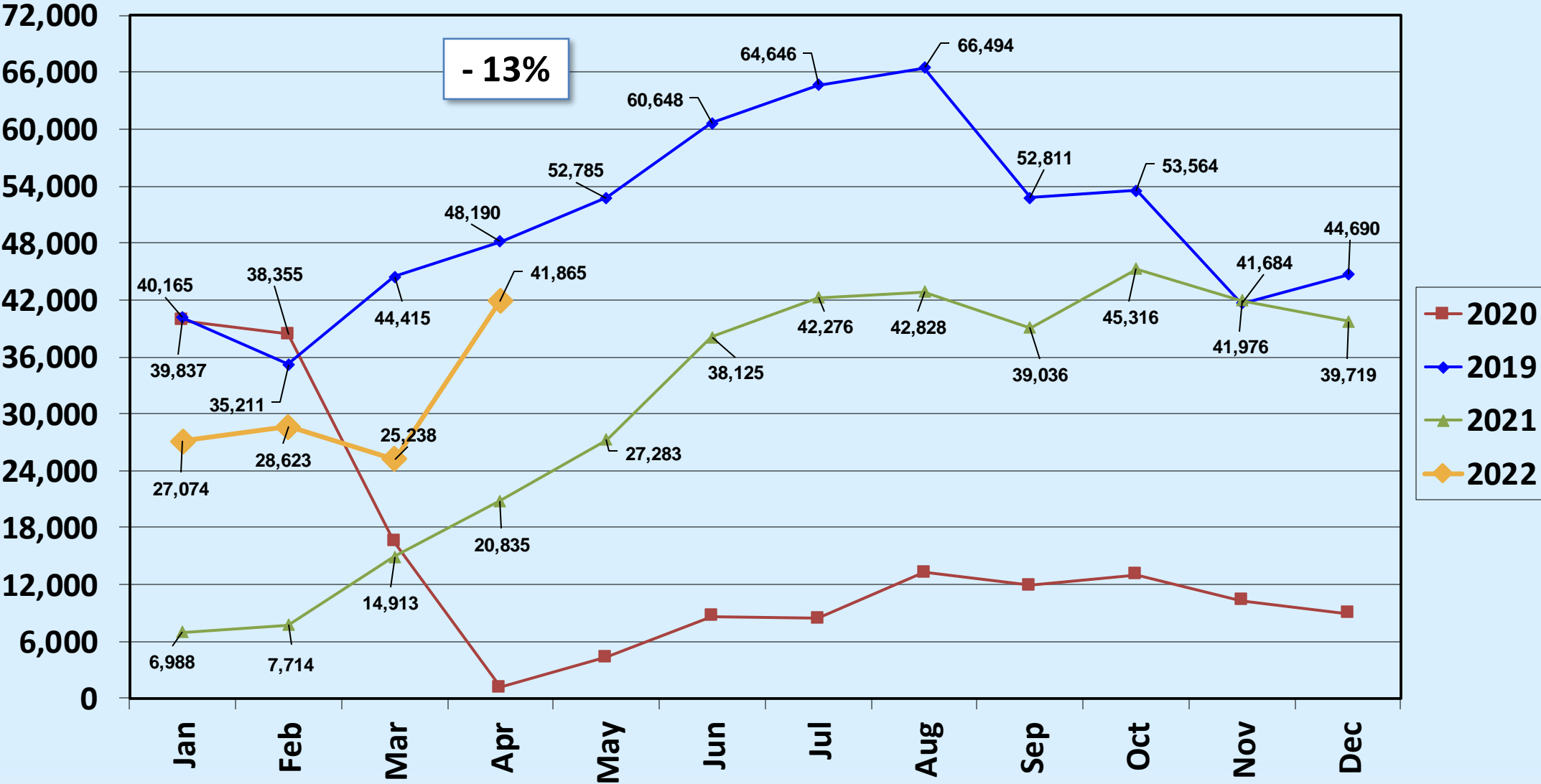


# Air Carrier Operations All Airlines

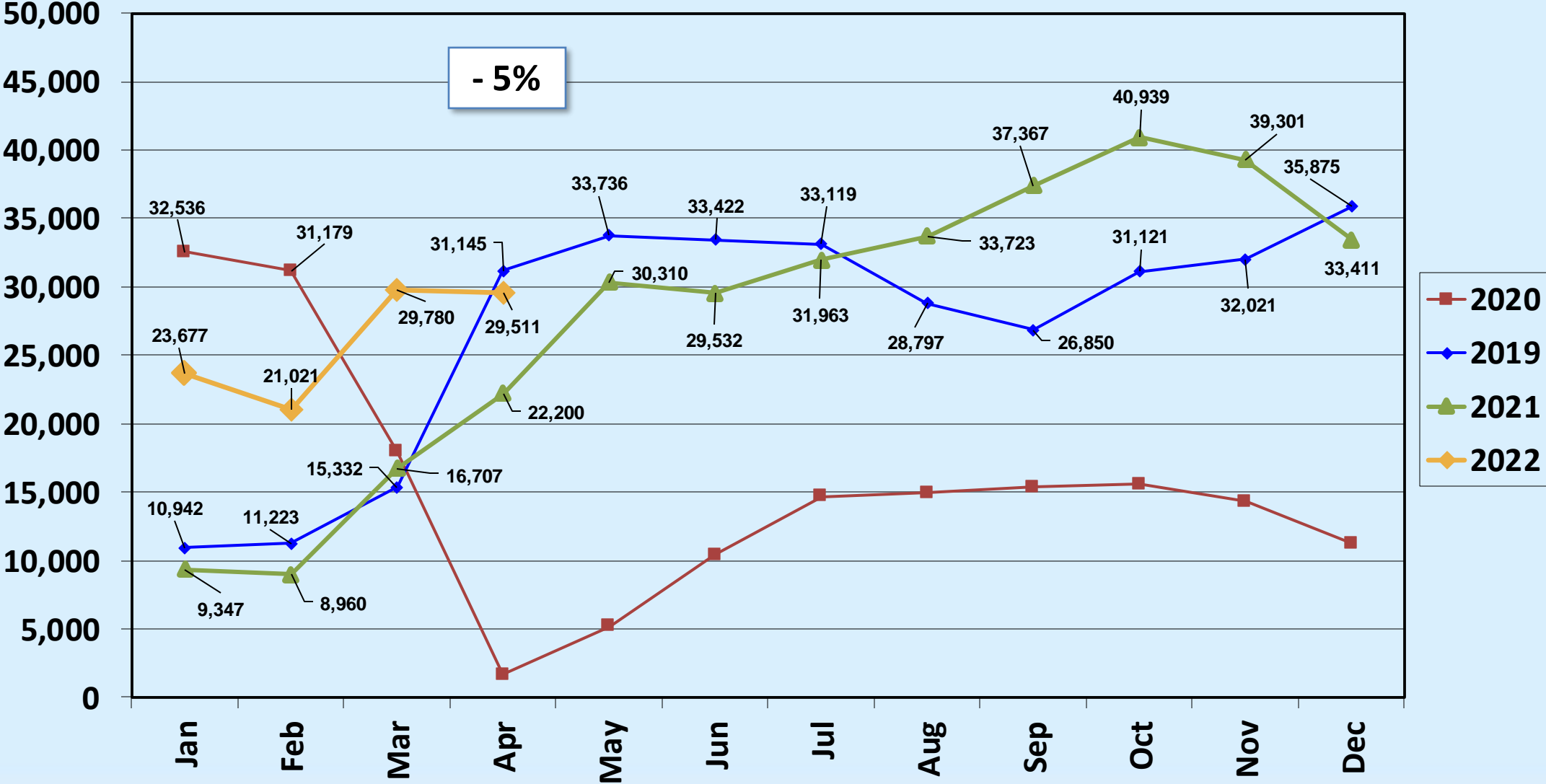
April 2022: 7.5% MOM; - 11.39% FYTD; - 0.97% CYTD



# Revenue Passengers Alaska Airlines

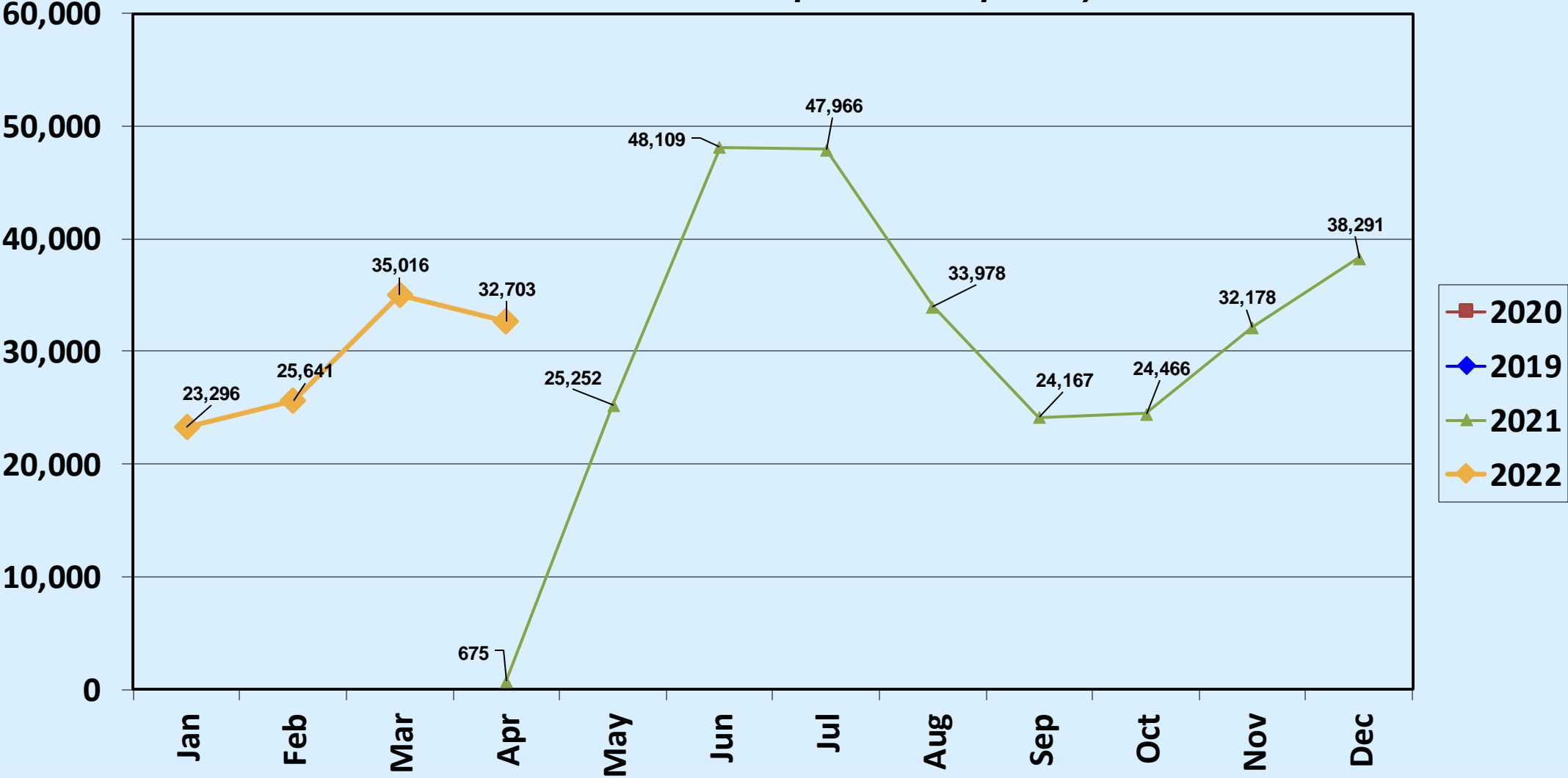


# Revenue Passengers American Airlines

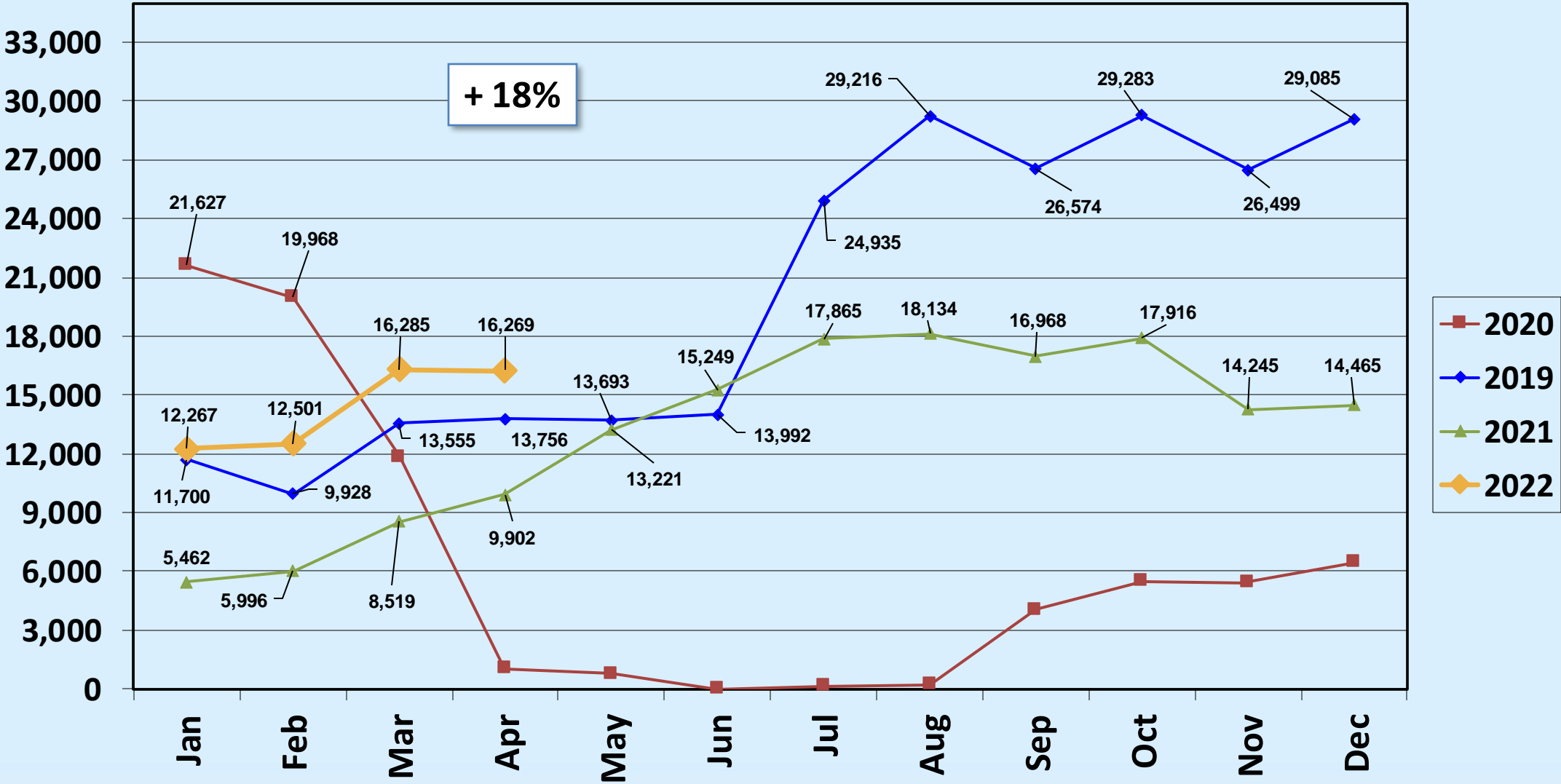


# Revenue Passengers Avelo Airlines

*Note: Avelo started operations April 28, 2021*

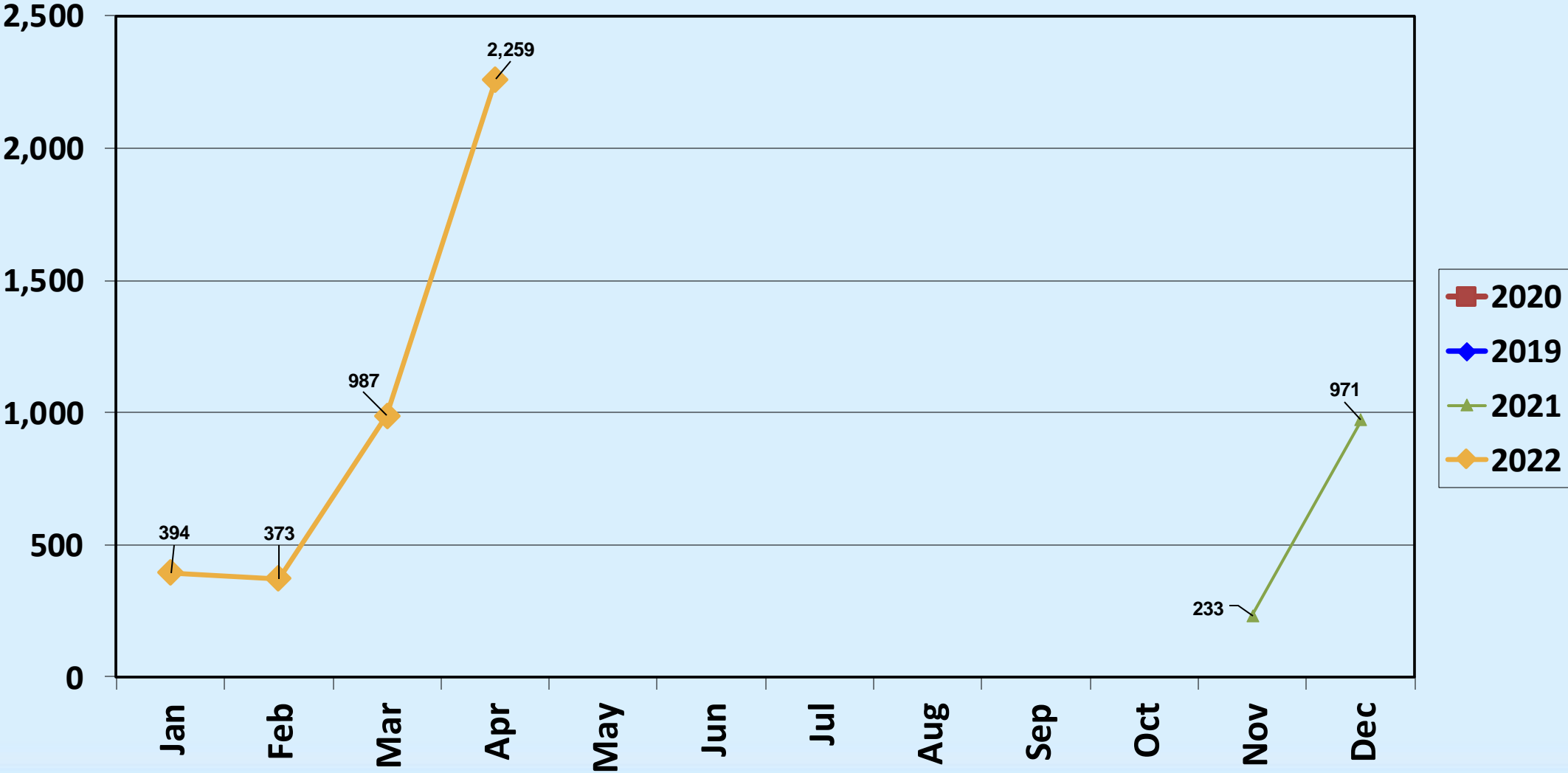


# Revenue Passengers Delta Air Lines



# Revenue Passengers Flair Airlines

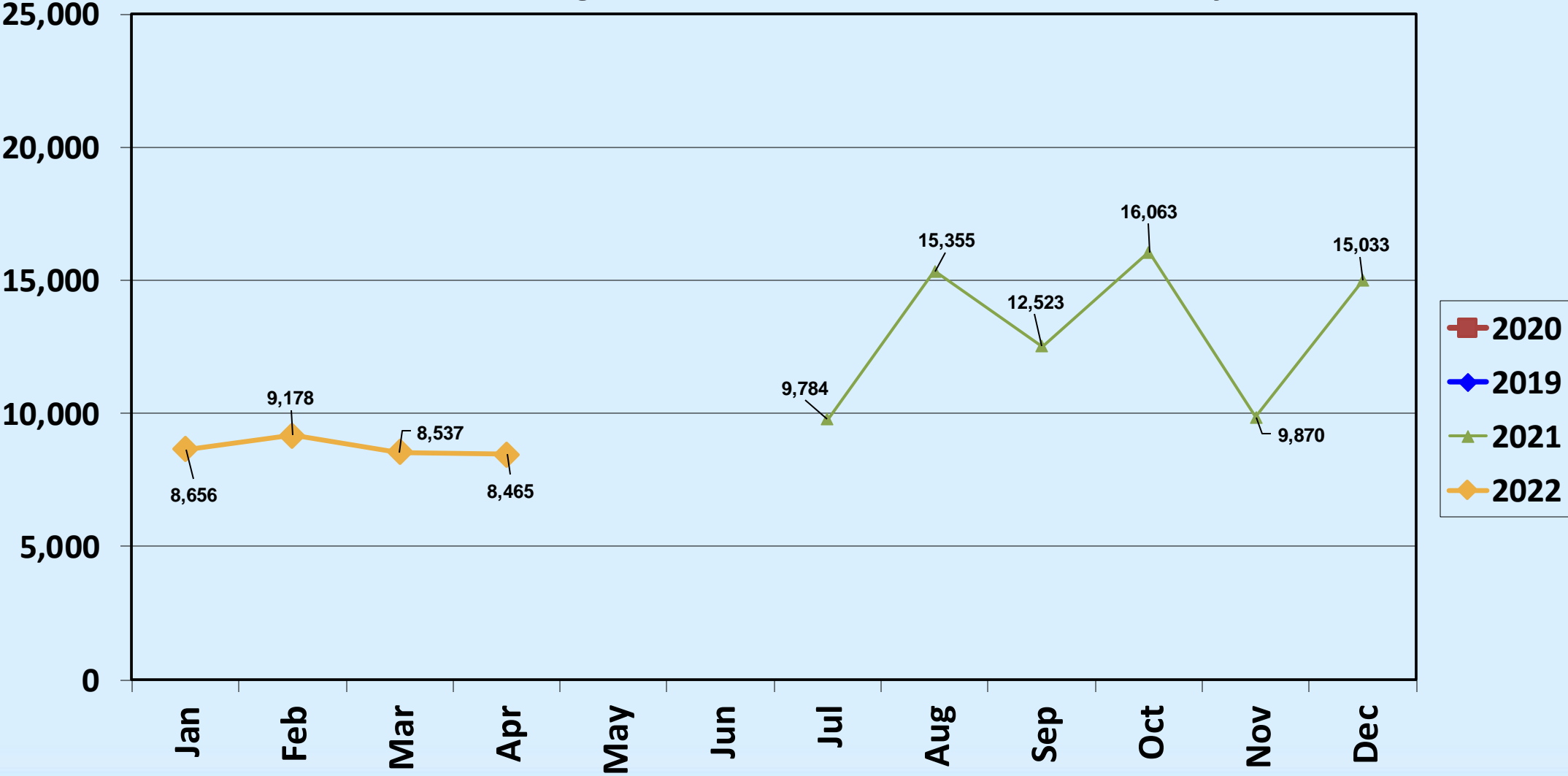
*Note: Flair Airlines began service to YVR on November 21, 2021, and YEG on December 16, 2021*



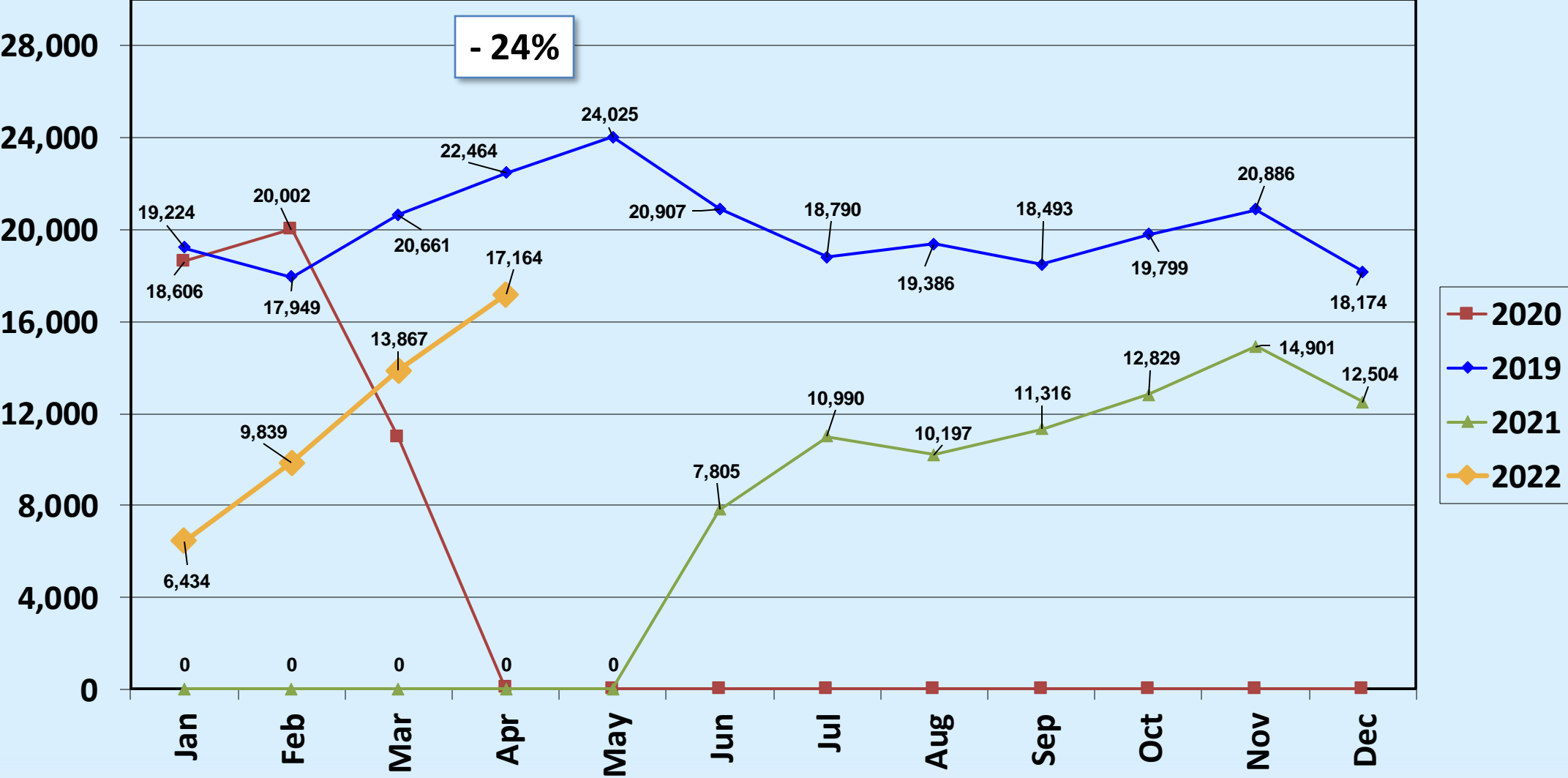


# Revenue Passengers Frontier Airlines

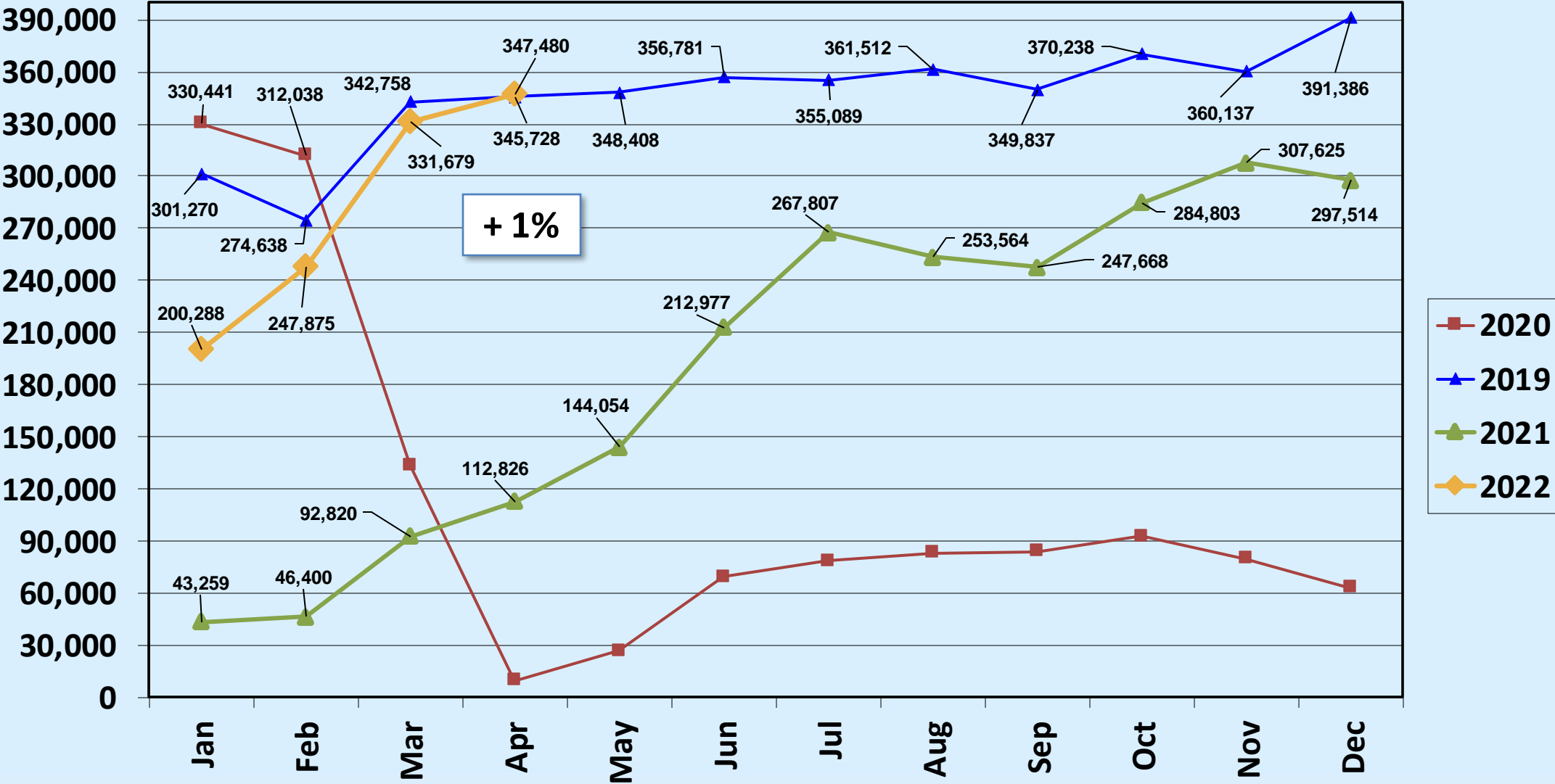
*Note: Frontier Airlines began service to DEN, LAS, and PHX on July 15, 2021*



# Revenue Passengers JetBlue Airways

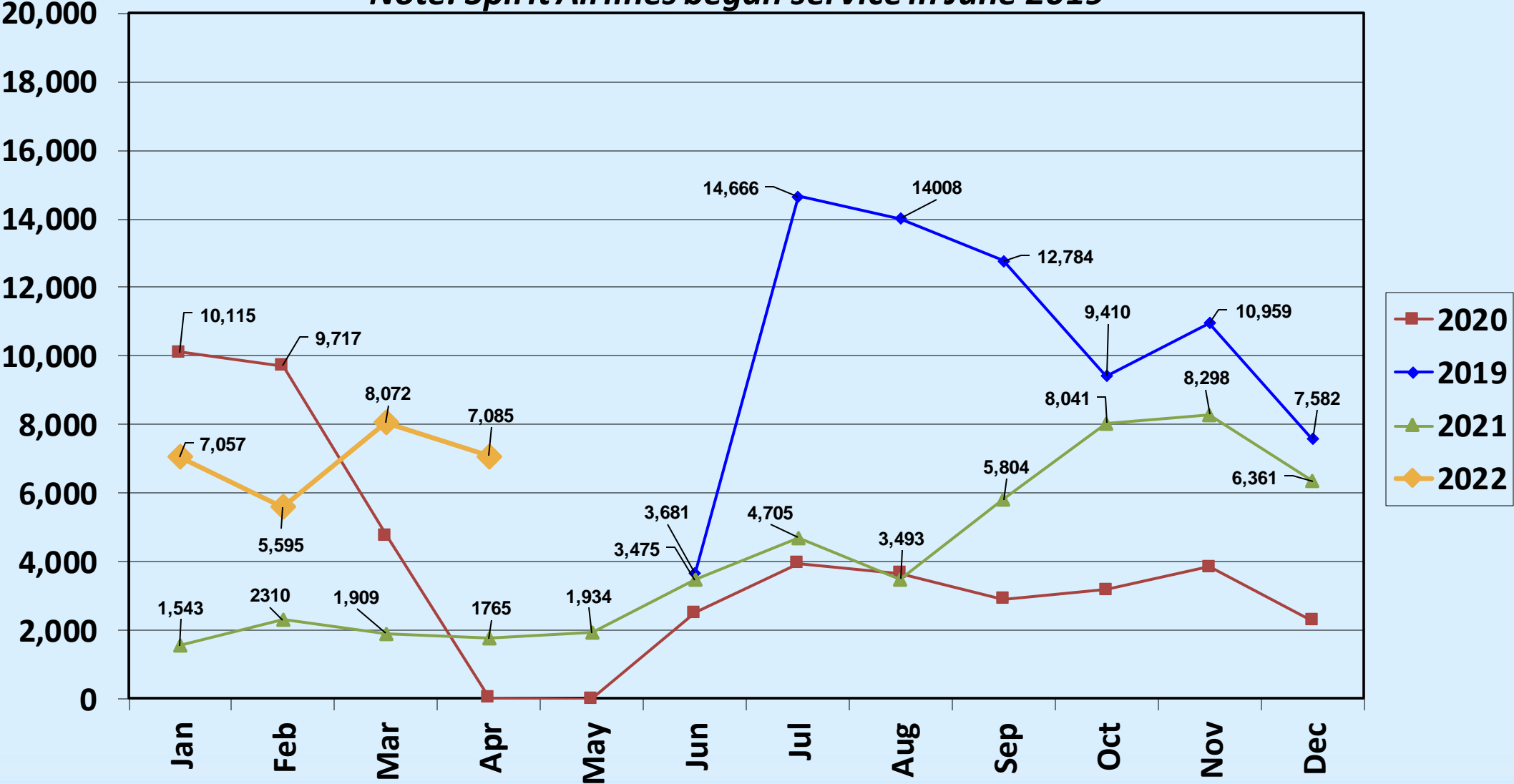


# Revenue Passengers Southwest Airlines

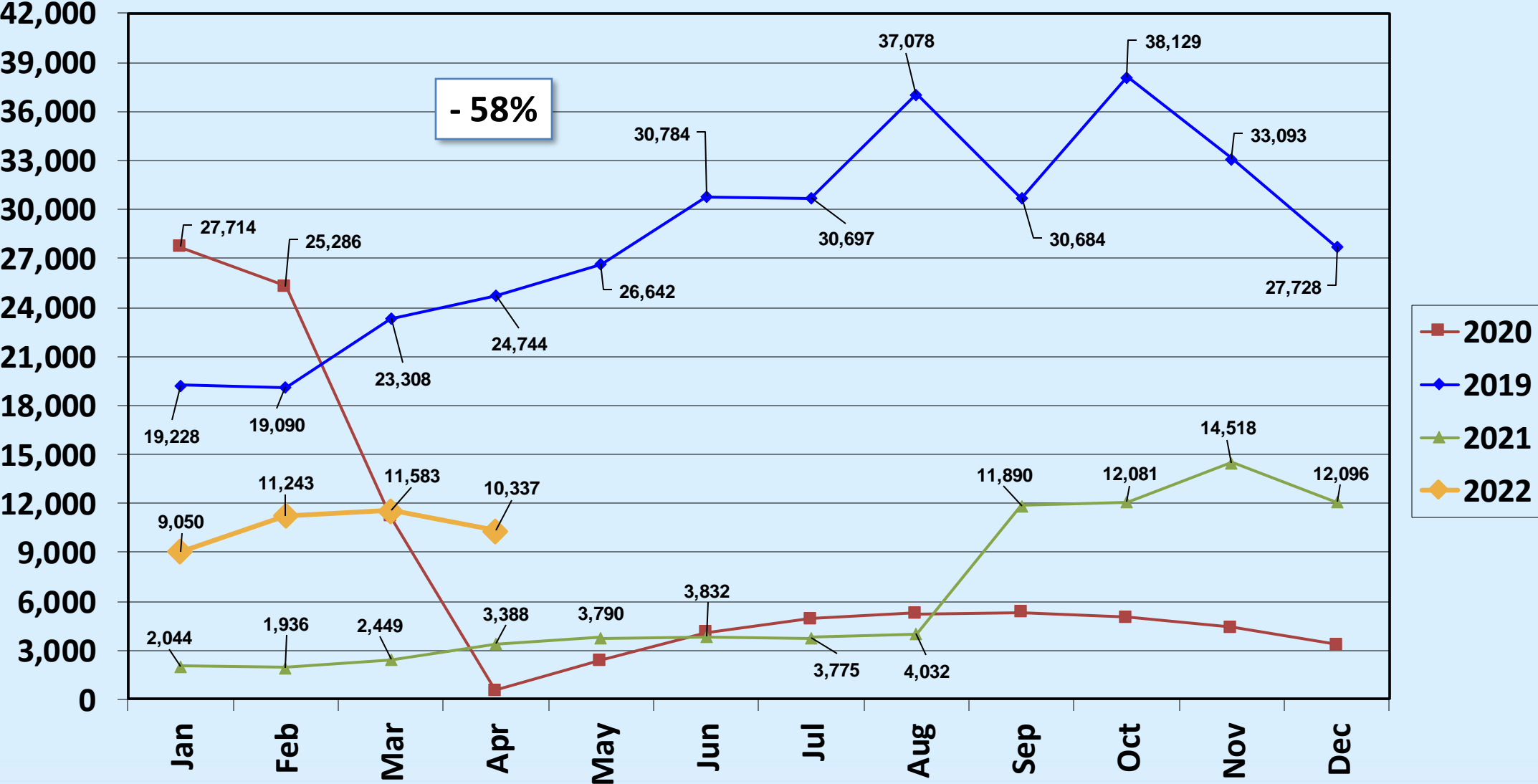


# Revenue Passengers Spirit Airlines

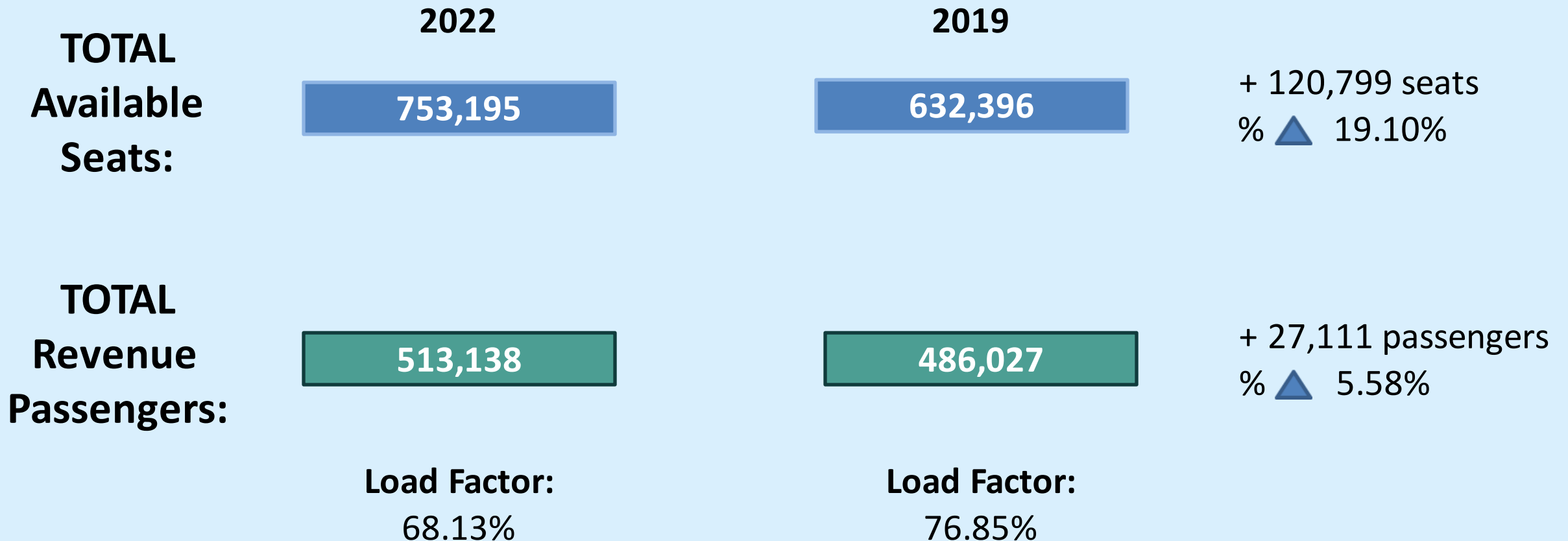
*Note: Spirit Airlines began service in June 2019*



# Revenue Passengers United Airlines



# Load Factor: April 2022 v. April 2019



# Load Factor: April 2022 v. April 2019

	April 2022		April 2019	
<b>Alaska</b>	<b>Seats: 47,430</b> <b>Pax: 41,865</b>	<b>Load Factor:</b> 88.27%	<b>Seats: 57,812</b> <b>Pax: 48,190</b>	<b>Load Factor:</b> 83.36%
<b>American</b>	<b>Seats: 30,310</b> <b>Pax: 29,511</b>	<b>Load Factor:</b> 97.36%	<b>Seats: 35,978</b> <b>Pax: 31,145</b>	<b>Load Factor:</b> 86.57%
<b>Avelo</b>	<b>Seats: 39,837</b> <b>Pax: 32,703</b>	<b>Load Factor:</b> 82.09%	<b>Seats: 0</b> <b>Pax: 0</b>	<b>Load Factor:</b> N/A

# Load Factor: April 2022 v. April 2019

	April 2022		April 2019	
<b>Delta</b>	<b>Seats: 18,240</b> <b>Pax: 16,269</b>	<b>Load Factor:</b> 89.19%	<b>Seats: 16,416</b> <b>Pax: 13,756</b>	<b>Load Factor:</b> 83.80%
<b>Flair</b>	<b>Seats: 6,048</b> <b>Pax: 2,259</b>	<b>Load Factor:</b> 37.35%	<b>Seats: 0</b> <b>Pax: 0</b>	<b>Load Factor:</b> N/A
<b>Frontier</b>	<b>Seats: 12,624</b> <b>Pax: 8,465</b>	<b>Load Factor:</b> 67.05%	<b>Seats: 0</b> <b>Pax: 0</b>	<b>Load Factor:</b> N/A
<b>JetBlue</b>	<b>Seats: 18,056</b> <b>Pax: 17,164</b>	<b>Load Factor:</b> 95.06%	<b>Seats: 25,800</b> <b>Pax: 22,464</b>	<b>Load Factor:</b> 87.07%



# Load Factor: April 2022 v. April 2019

	April 2022		April 2019	
<b>Southwest</b>	<b>Seats: 554,120</b> <b>Pax: 347,480</b>	<b>Load Factor:</b> 62.71%	<b>Seats: 460,674</b> <b>Pax: 345,728</b>	<b>Load Factor:</b> 75.05%
<b>Spirit</b>	<b>Seats: 10,010</b> <b>Pax: 7,085</b>	<b>Load Factor:</b> 70.78%	<b>Seats: 0</b> <b>Pax: 0</b>	<b>Load Factor:</b> N/A
<b>United</b>	<b>Seats: 16,520</b> <b>Pax: 10,337</b>	<b>Load Factor:</b> 62.57%	<b>Seats: 35,716</b> <b>Pax: 24,744</b>	<b>Load Factor:</b> 69.28%

# Regional Airport Passenger Statistics

## April 2022 v. April 2019

### BUR

2022 513,138  
2019 486,027  
% ▲ 5.58%

### ONT

2022 475,741  
2019 444,948  
% ▲ 6.92%

### SNA

2022 958,826  
2019 899,186  
% ▲ 6.63%

### LAX

2022 5,441,504  
2019 7,233,370  
% ▼ - 24.77%

### LGB

2022 274,381  
2019 296,941  
% ▼ - 7.60%



# AIR CARRIER OPERATIONS

## ALL AIRLINES

### BREAKDOWN - MONTHLY TOTALS

	JAN	FEB	MAR	APR	MAY	JUN	JUL	AUG	SEP	OCT	NOV	DEC
<b>2022</b>	4,989	4,793	5,288	5,487								
<b>2021</b>	1,773	1,501	2,273	2,189	2,704	3,569	4,194	4,297	4,745	5,199	5,112	5,045
<b>2020</b>	5,231	5,319	4,472	1,695	1,498	2,079	2,683	2,593	2,159	2,154	2,091	2,070
<b>2019</b>	4,996	4,315	5,015	5,104	5,270	5,652	6,184	6,026	5,701	6,059	5,298	5,438
<b>2018</b>	4,646	4,163	4,673	4,665	4,820	4,639	4,843	4,904	4,632	4,994	4,886	4,963
<b>2007</b>	5,777	5,203	5,834	5,857	6,237	6,023	6,318	6,324	5,974	6,326	6,001	6,075