



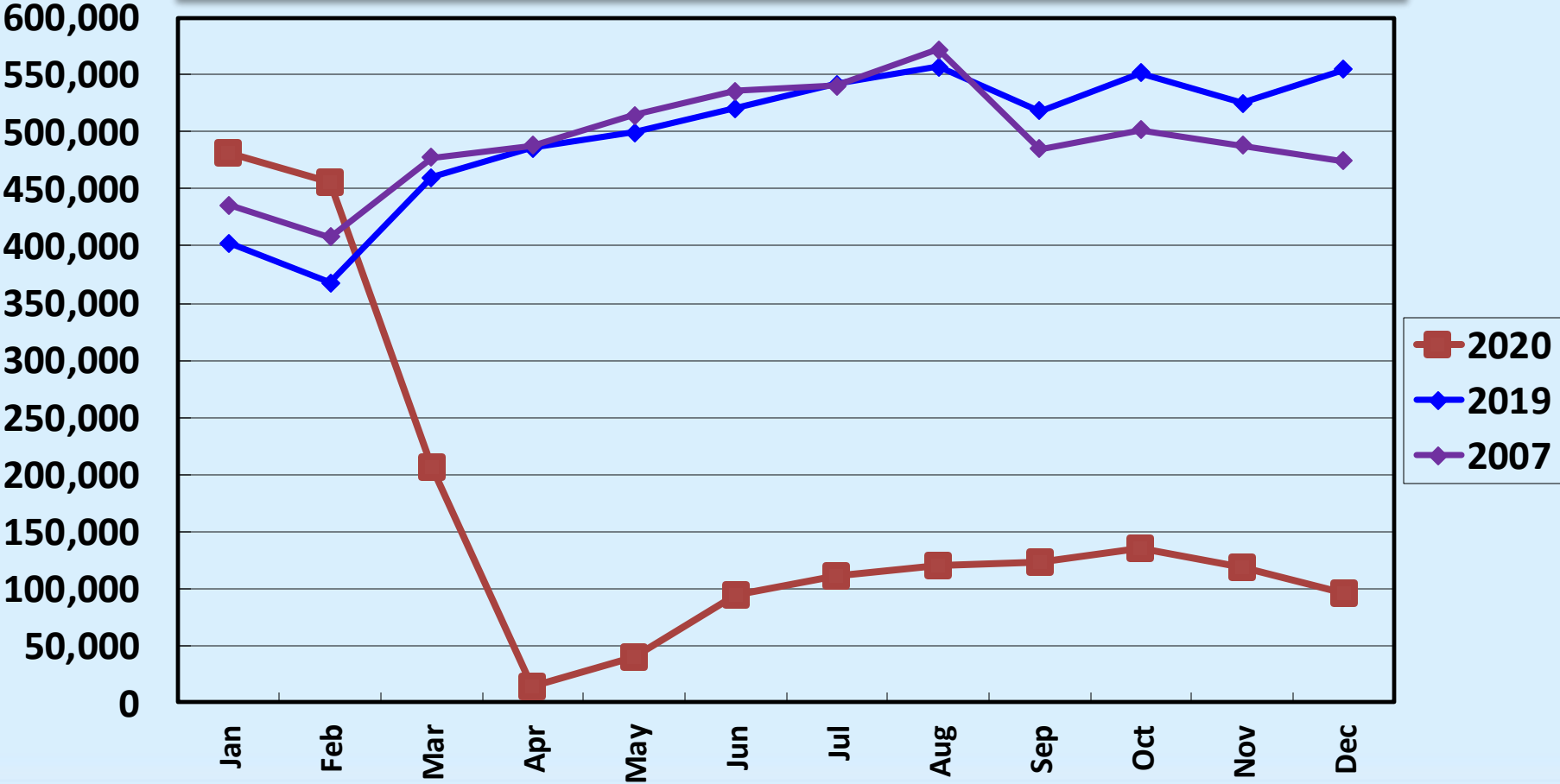
Passenger Statistics Report December 2020

Presented to
Burbank-Glendale-Pasadena
Airport Authority
February 16, 2021

Presented by
Nerissa Sugars, Director,
Marketing Communications and Air Service

Revenue Passengers All Airlines

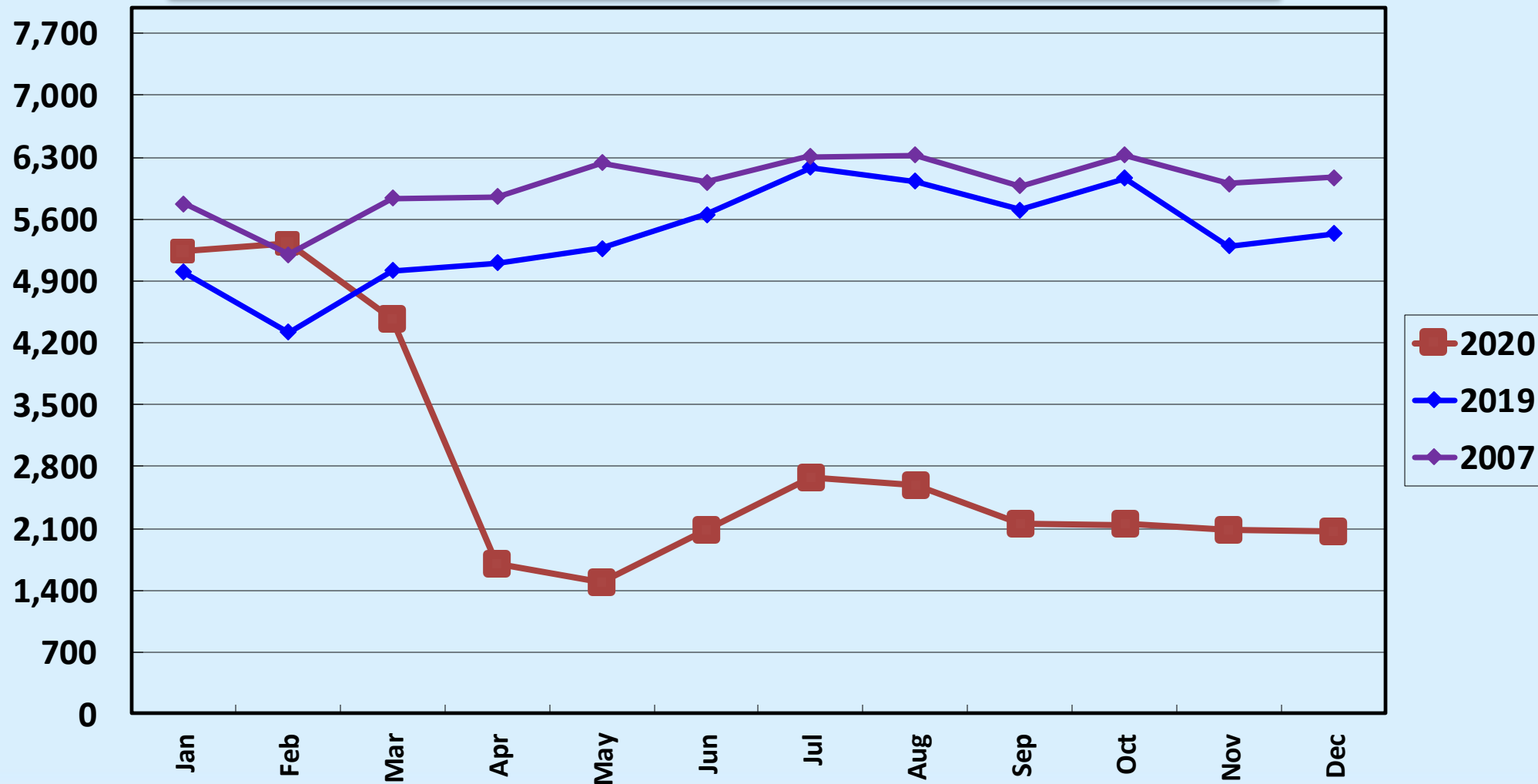
December 2020: - 82.79% MOM; Budget Assumption: - 75%;
Fiscal Year to Date: - 78.36%; Budget Assumption: - 80%;
Calendar Year 2020: - 66.65%



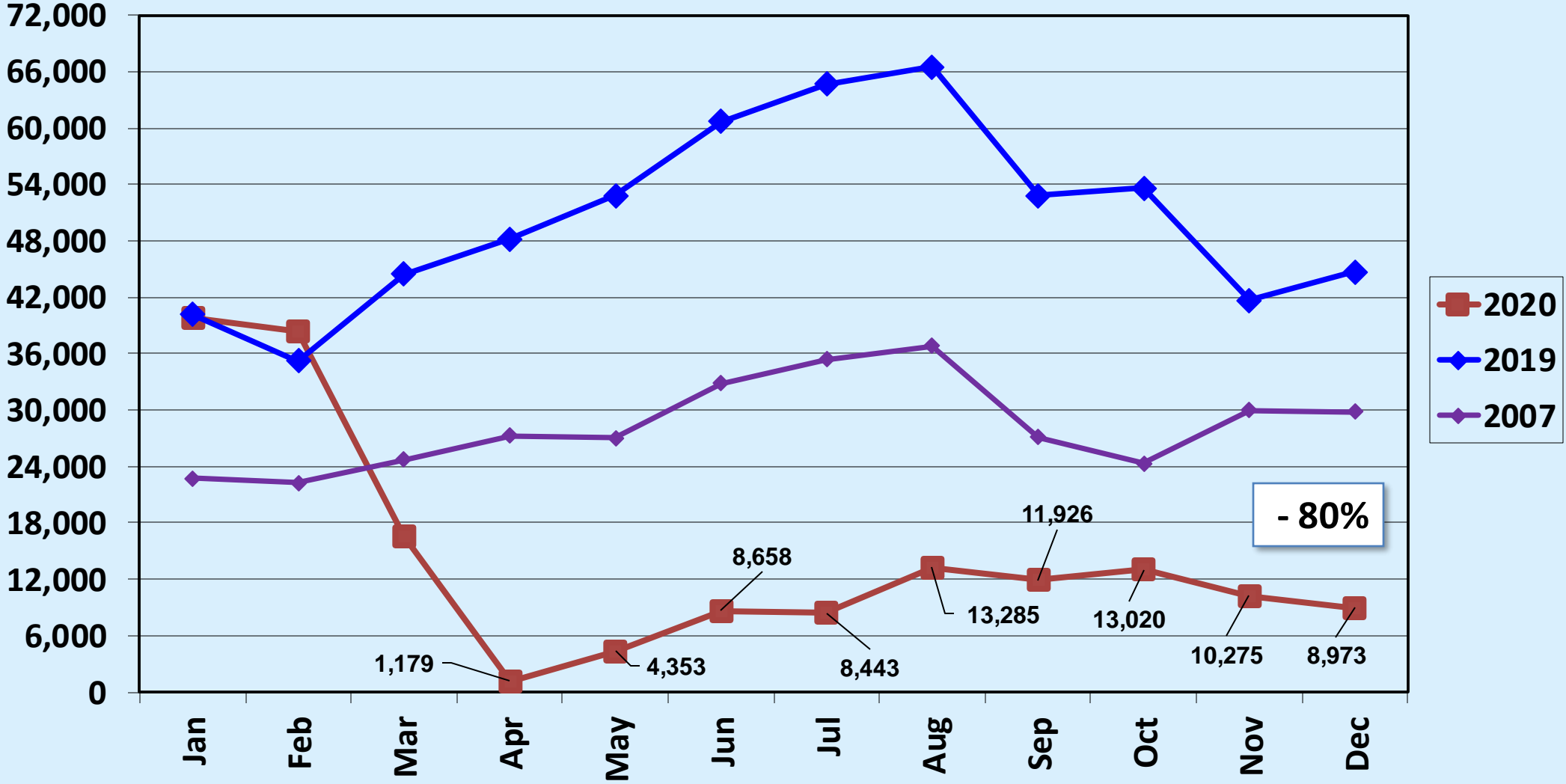
Air Carrier Operations

All Airlines

December 2020: - 61.93% MOM; - 60.38% FYTD; - 47.67% CYTD

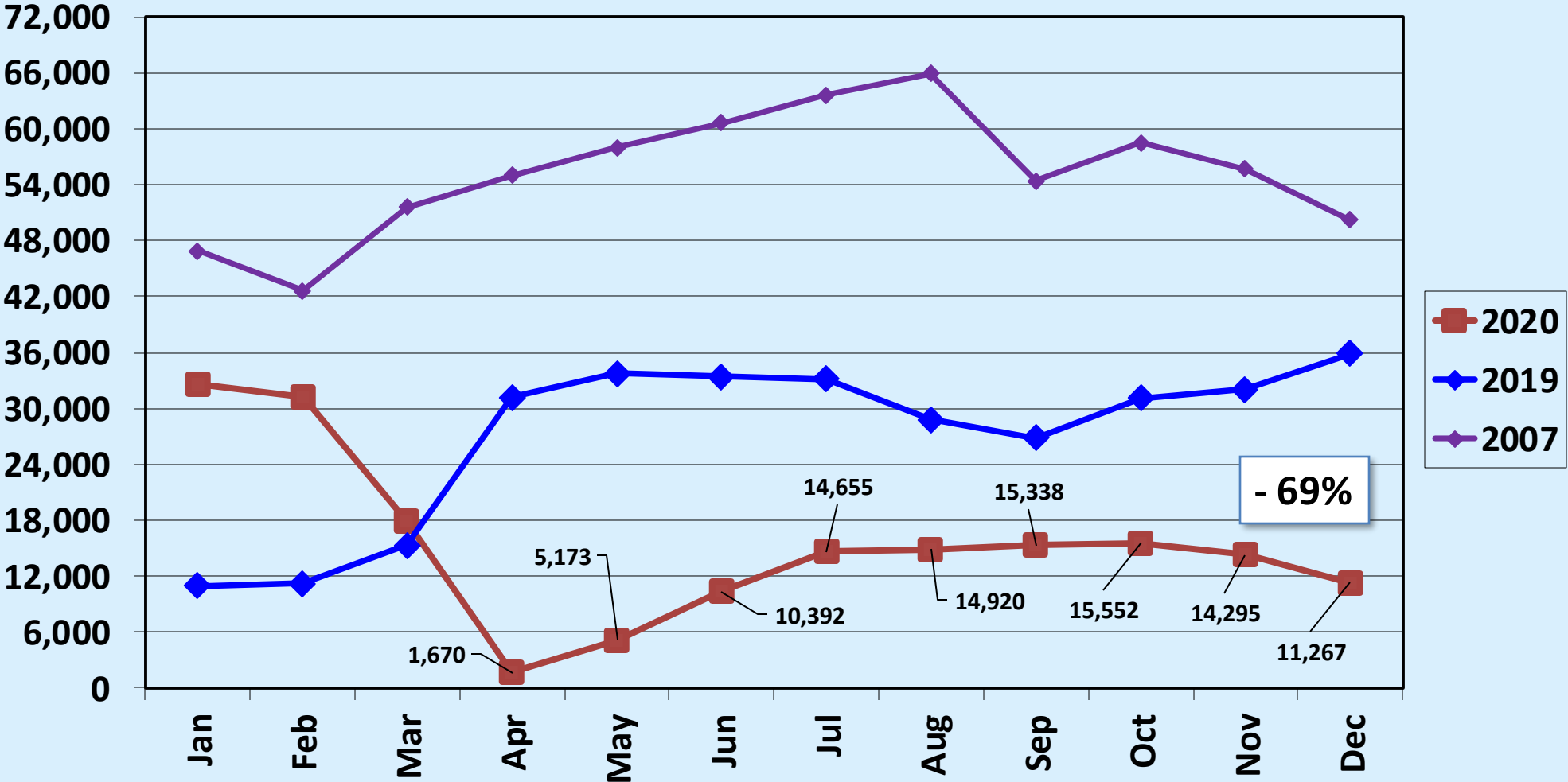


Revenue Passengers Alaska Airlines



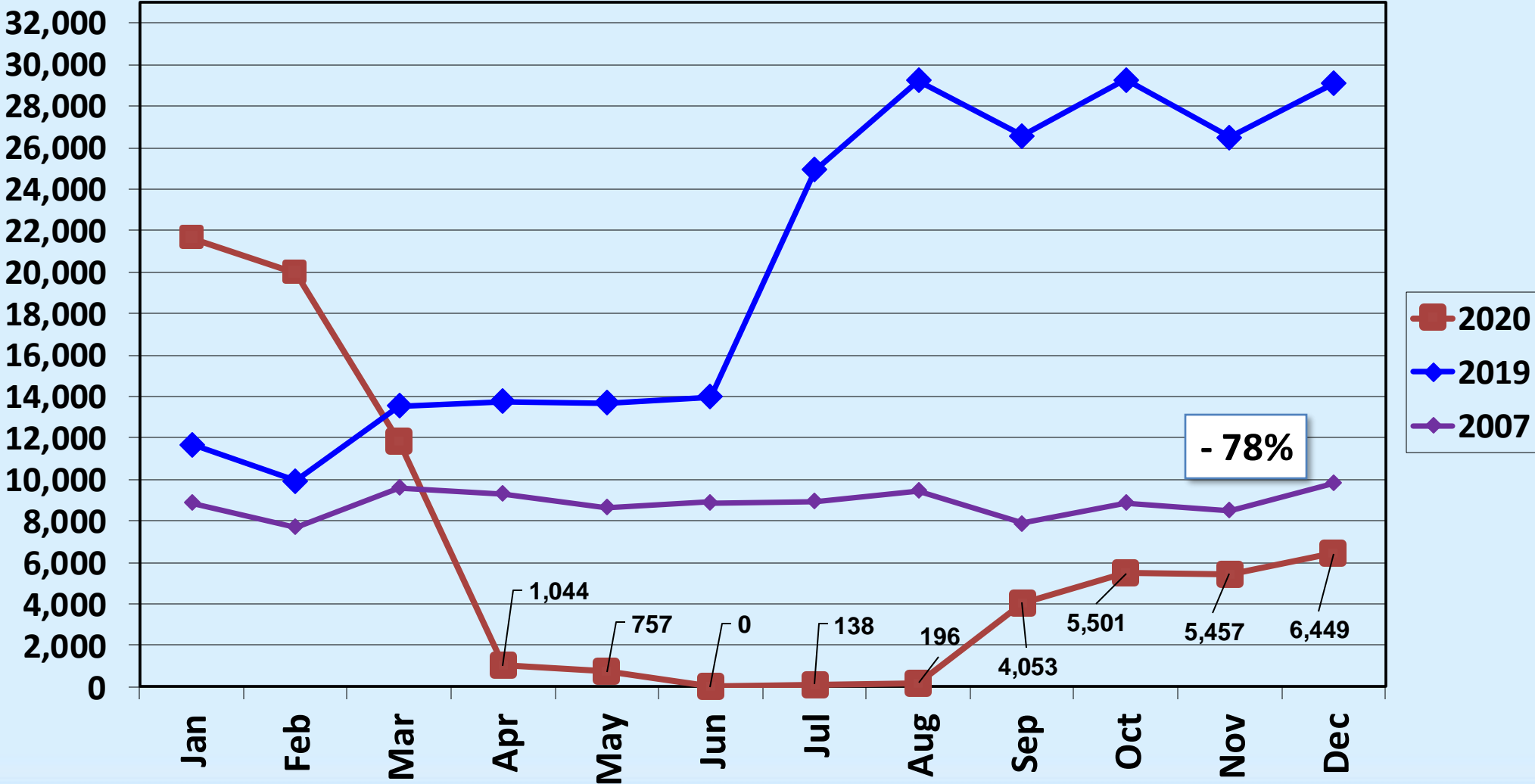
Revenue Passengers American Airlines

Note: For the purposes of this comparison, American Airlines in CY 2007 includes US Airways/America West.



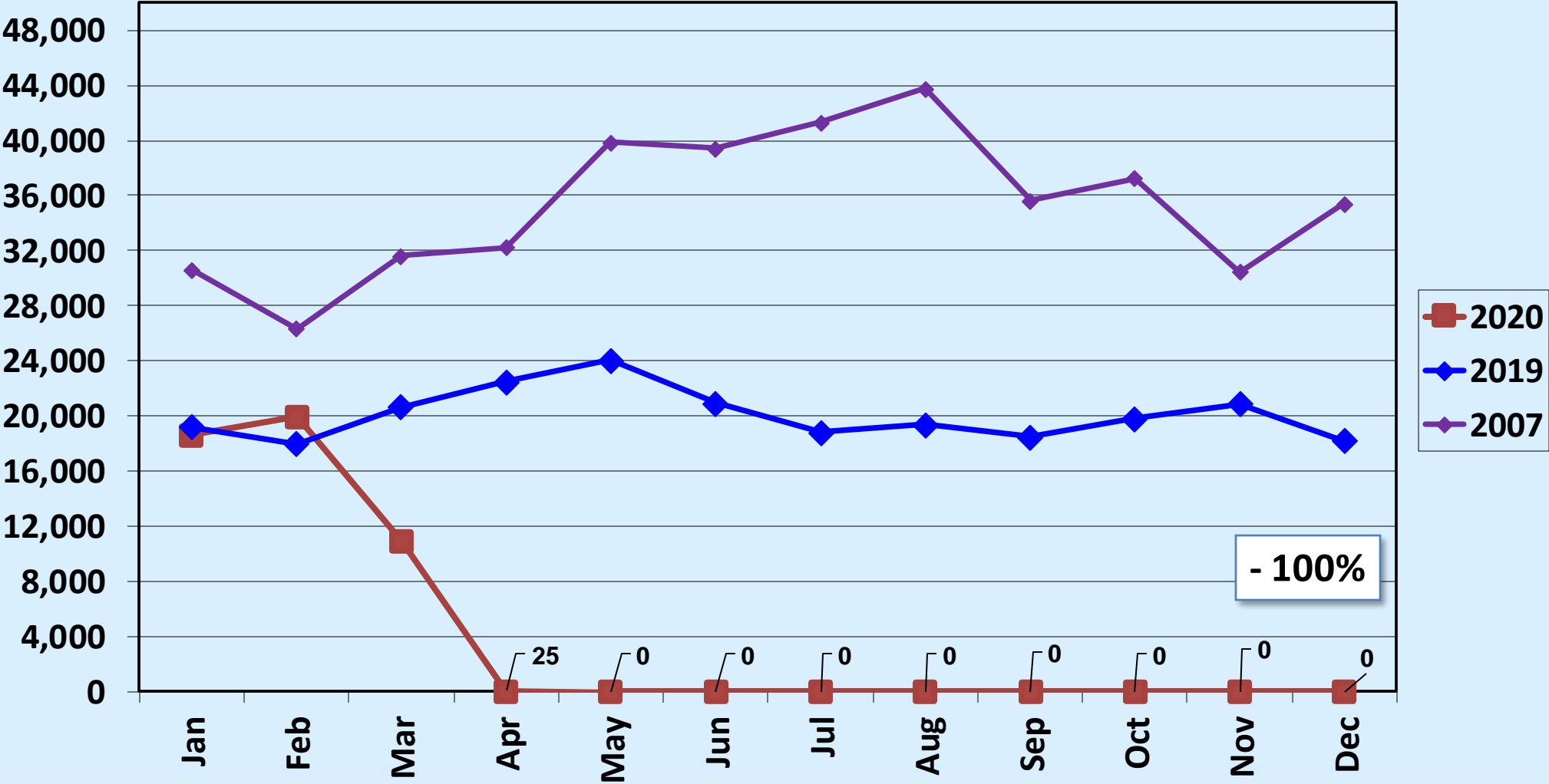
Revenue Passengers Delta Air Lines

Note: Delta Air Lines currently provides air service to Salt Lake City only.



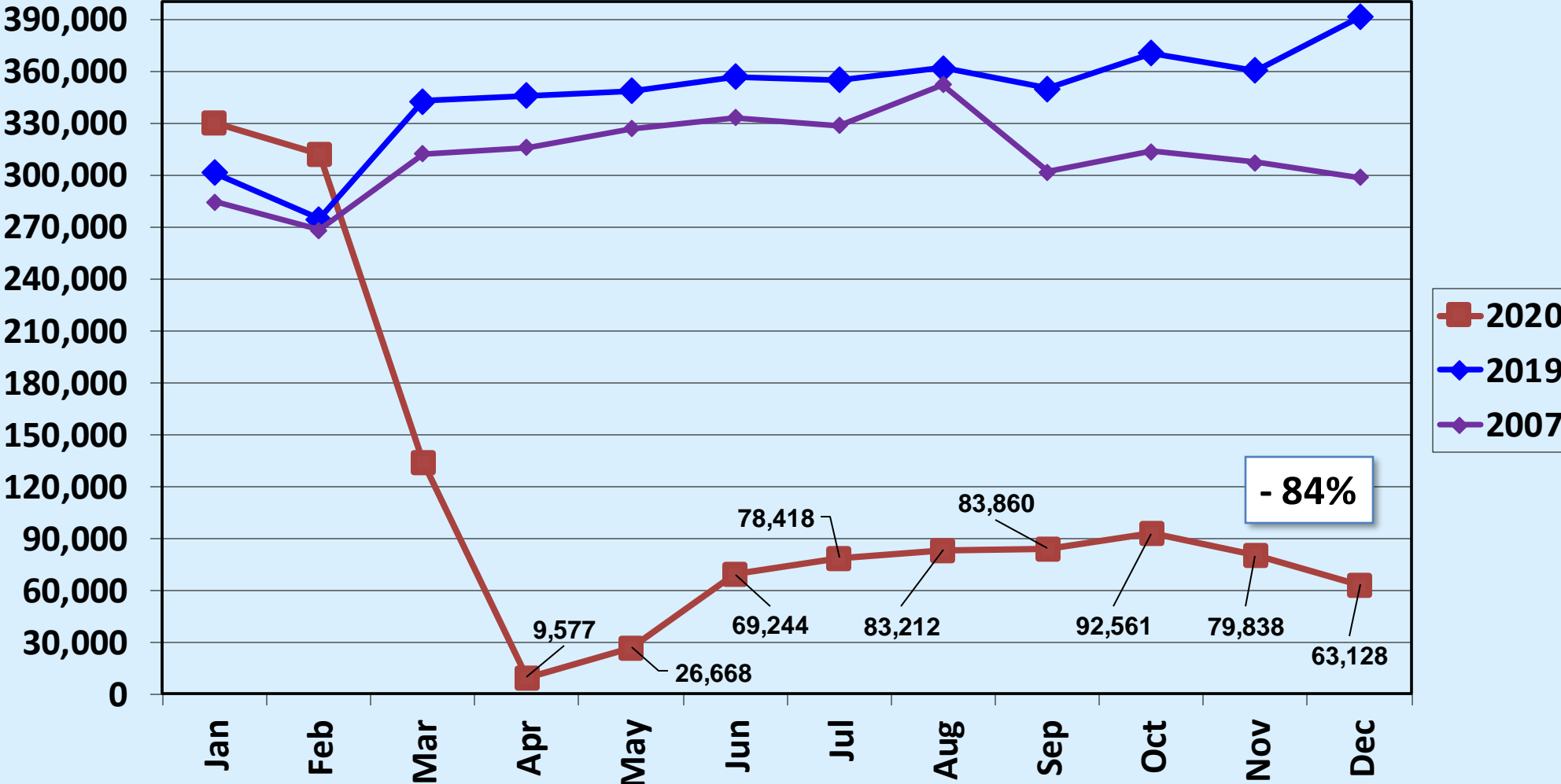
Revenue Passengers JetBlue Airways

Note: JetBlue Airways has suspended air service until June 2021.

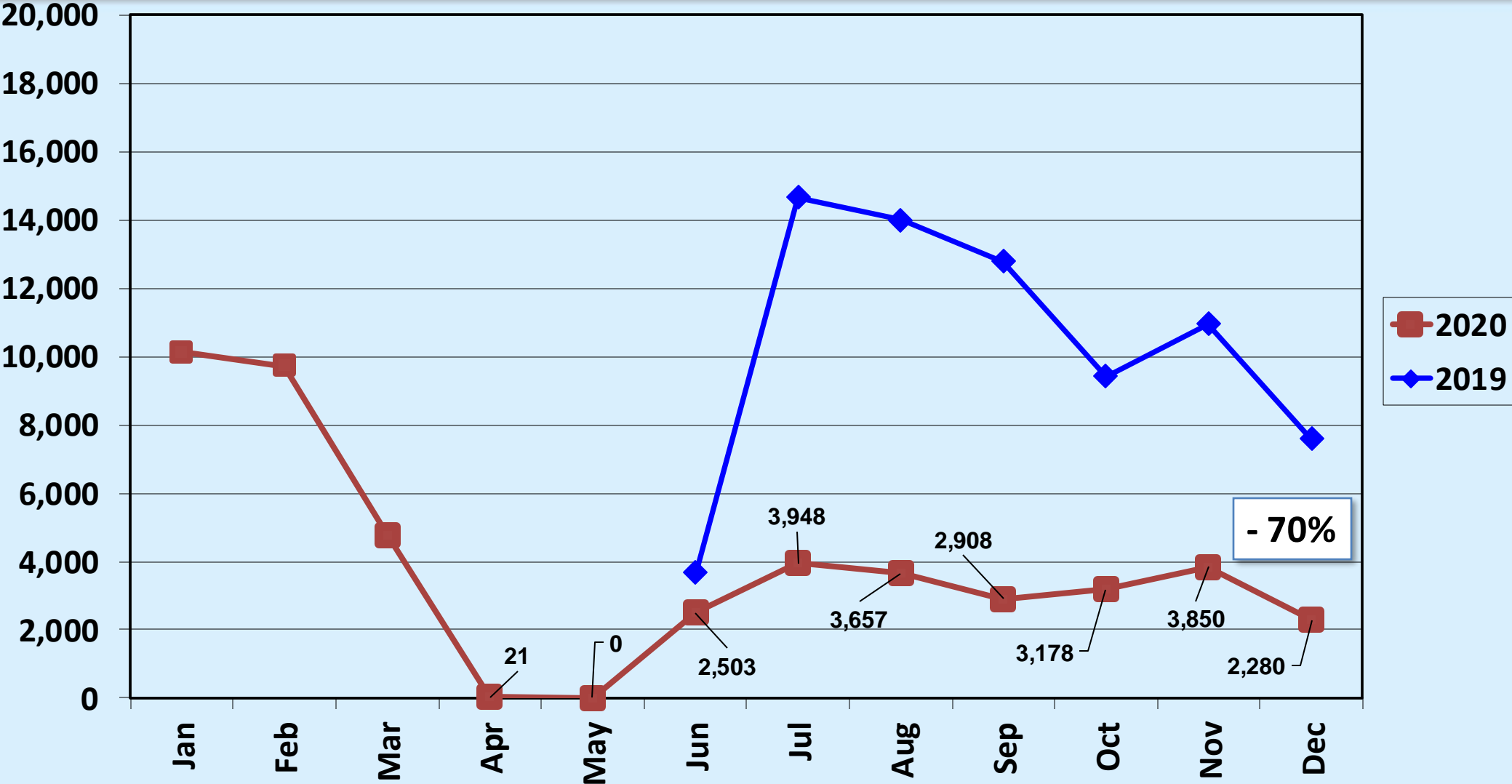


Revenue Passengers Southwest Airlines

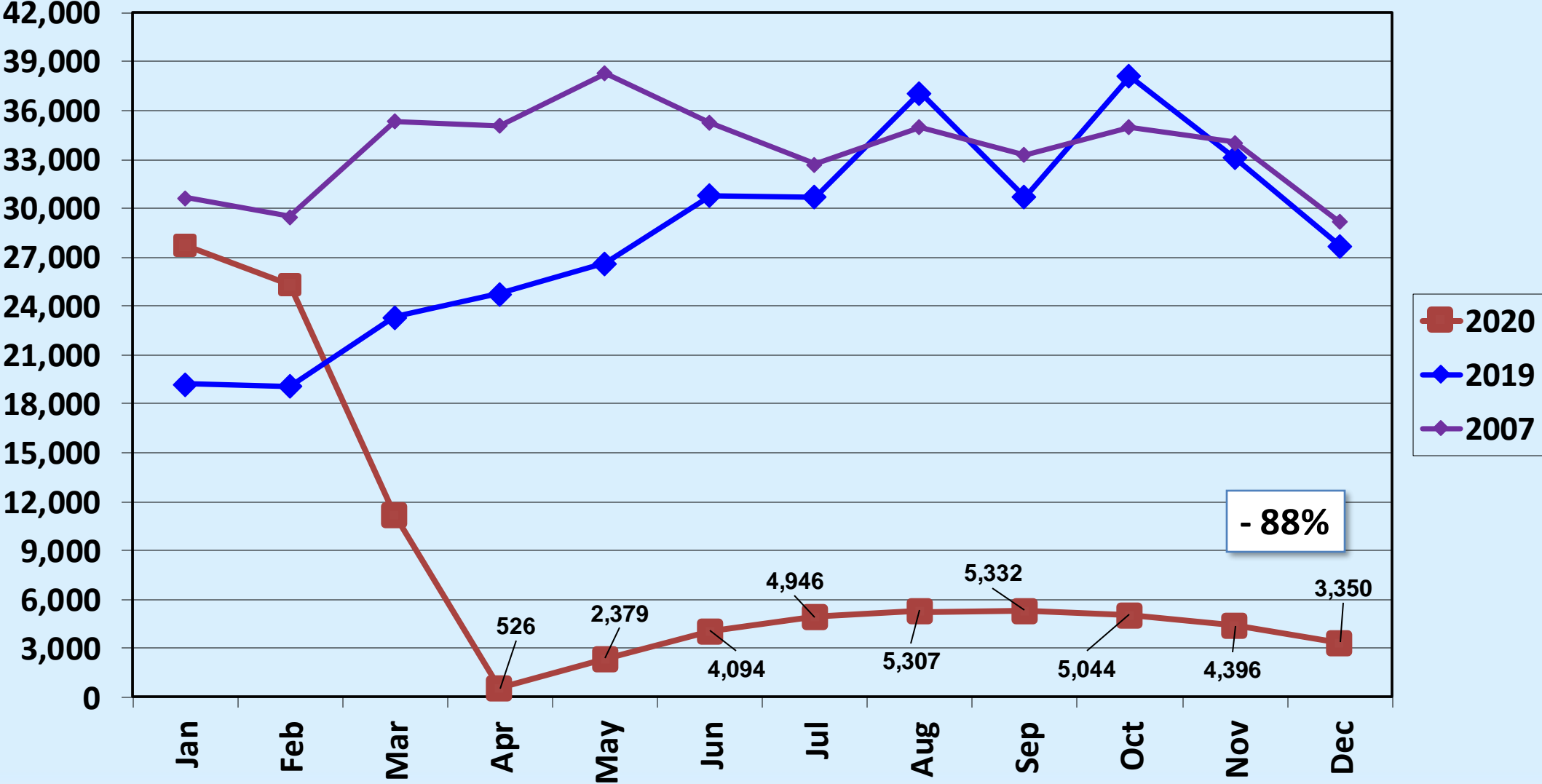
Note: Southwest Airlines continues to suspend air service to BNA, HOU, DAL and MDW.



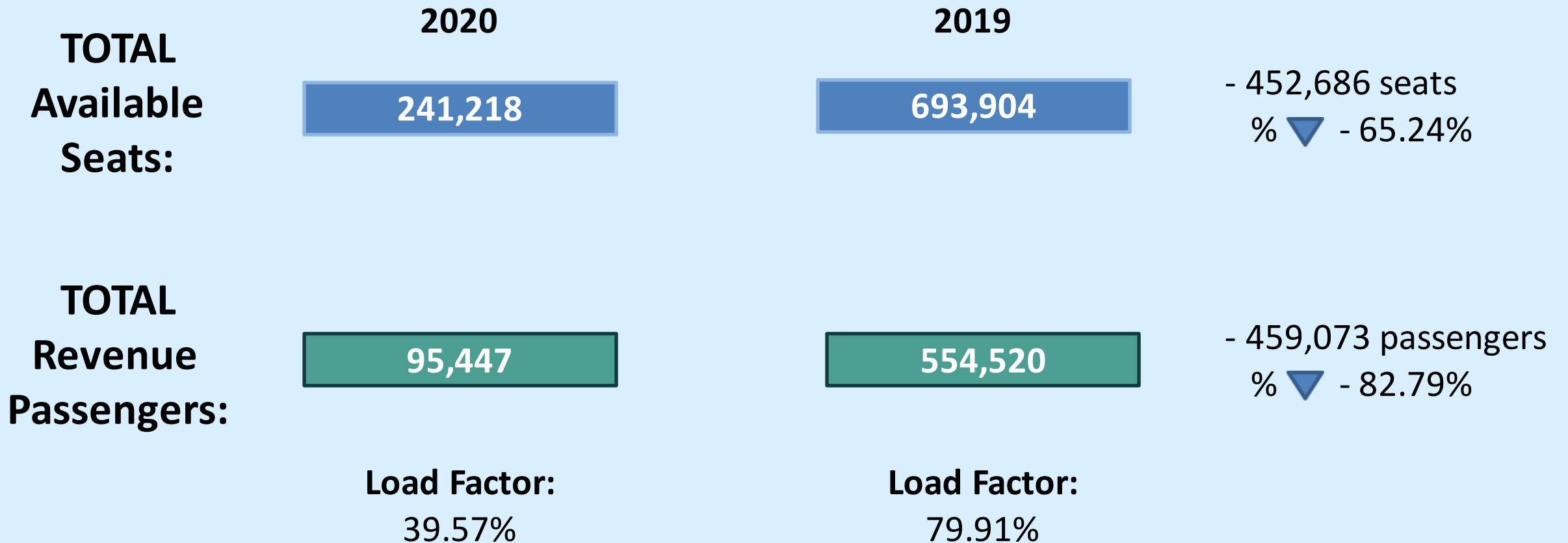
Revenue Passengers Spirit Airlines



Revenue Passengers United Airlines



Totals: December 2020 v. December 2019



Load Factor: December 2020 v. December 2019

	December 2020			December 2019		
Alaska	Seats: 28,470	Pax: 8,973	Load Factor: 31.52%	Seats: 48,864	Pax: 44,690	Load Factor: 91.46%
American	Seats: 19,998	Pax: 11,267	Load Factor: 56.34%	Seats: 42,364	Pax: 35,875	Load Factor: 84.68%
Delta	Seats: 15,352	Pax: 6,449	Load Factor: 42.01%	Seats: 33,248	Pax: 29,085	Load Factor: 87.48%
JetBlue	Seats: 0	Pax: 0	Load Factor: N/A	Seats: 21,744	Pax: 18,174	Load Factor: 83.58%

Load Factor: December 2020 v. December 2019

	December 2020		December 2019	
Southwest	Seats: 160,754 Pax: 63,128	Load Factor: 39.27%	Seats: 498,382 Pax: 391,386	Load Factor: 78.53%
Spirit	Seats: 8,736 Pax: 2,280	Load Factor: 26.10%	Seats: 9,570 Pax: 7,582	Load Factor: 79.23%
United	Seats: 7,908 Pax: 3,350	Load Factor: 42.36%	Seats: 39,732 Pax: 27,728	Load Factor: 69.79%

Regional Airport Passenger Statistics

December 2020

BUR

2020	95,447
2019	554,520
%▼	- 82.79%

ONT

2020	190,534
2019	514,789
%▼	- 62.99%

SNA

2020	231,033
2019	891,492
%▼	- 74.08%

LAX

2020	1,976,284
2019	7,478,418
%▼	- 73.57%

LGB

2020	46,816
2019	321,686
%▼	- 85.45%

AIR CARRIER OPERATIONS

ALL AIRLINES

BREAKDOWN - MONTHLY TOTALS

	JAN	FEB	MAR	APR	MAY	JUN	JUL	AUG	SEP	OCT	NOV	DEC
2020	5,231	5,319	4,472	1,695	1,498	2,079	2,683	2,593	2,159	2,154	2,091	2,070
2019	4,996	4,315	5,015	5,104	5,270	5,652	6,184	6,026	5,701	6,059	5,298	5,438
2018	4,646	4,163	4,673	4,665	4,820	4,639	4,843	4,904	4,632	4,994	4,886	4,963
2007	5,777	5,203	5,834	5,857	6,237	6,023	6,318	6,324	5,974	6,326	6,001	6,075

CYTD TOTALS

	JAN-DEC
2020	34,044
2019	65,058
2018	56,828
2007	71,949