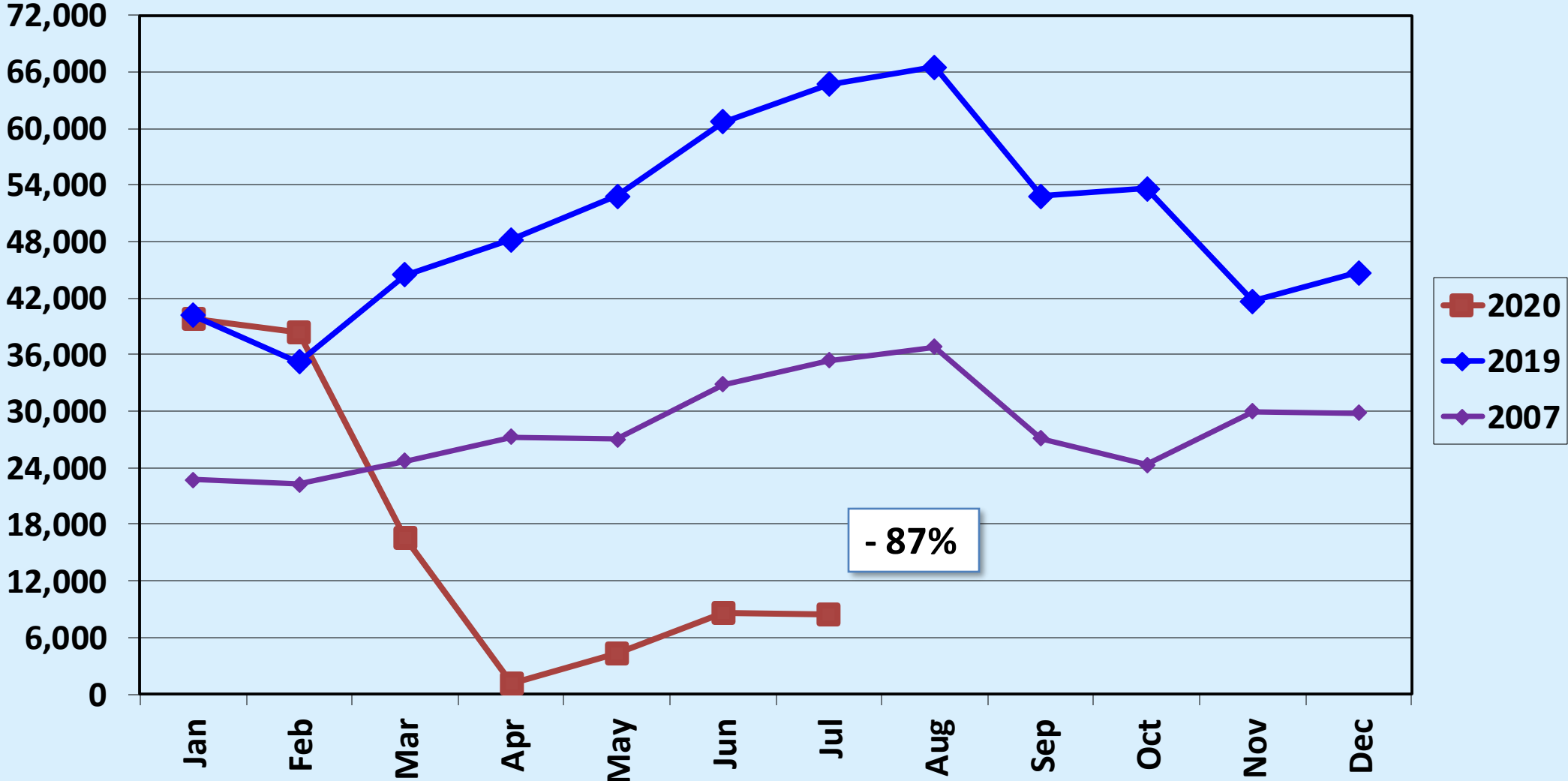




Passenger Statistics Report July 2020

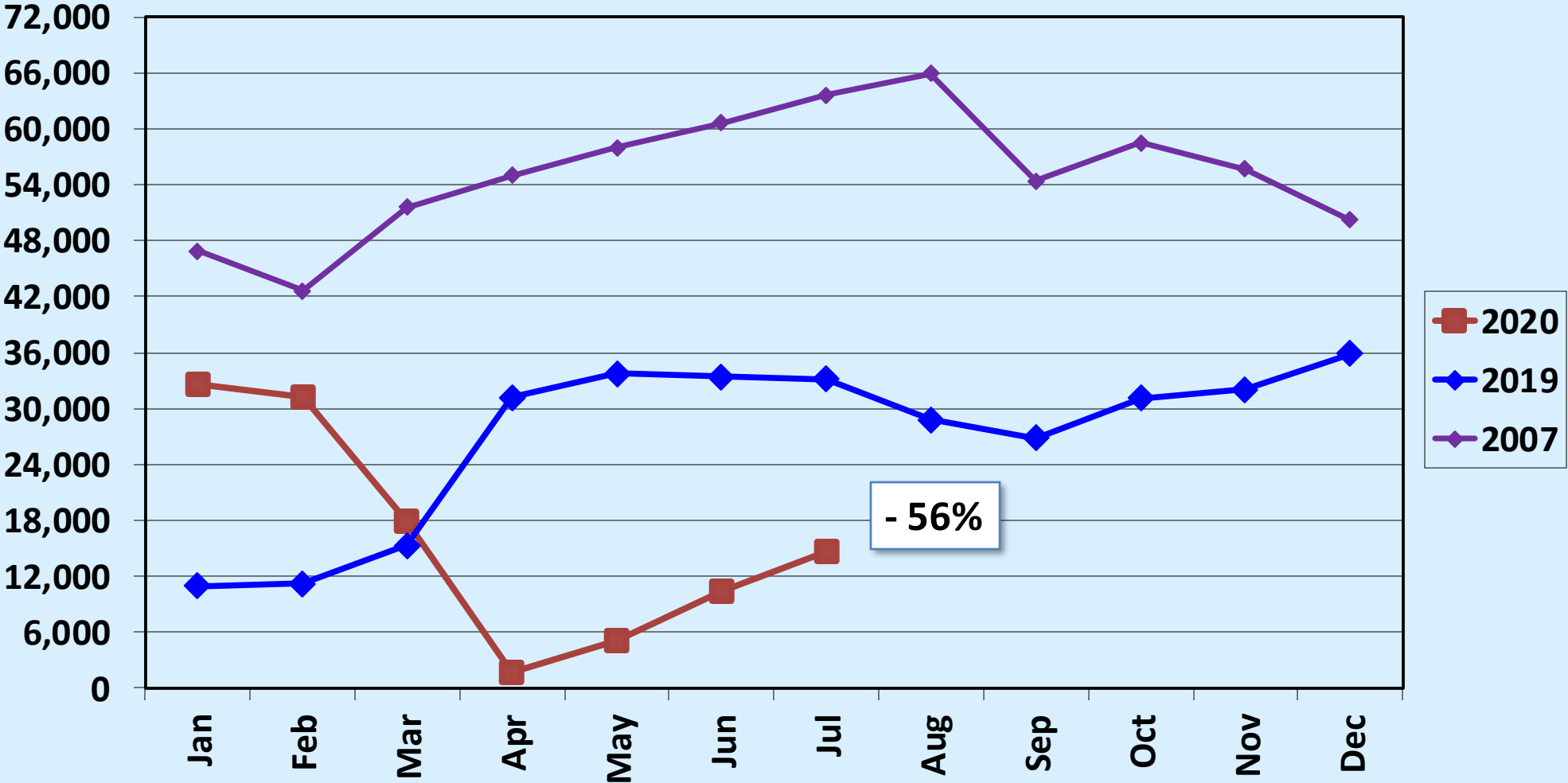
Presented to
Burbank-Glendale-Pasadena
Airport Authority
September 21, 2020

Revenue Passengers Alaska Airlines

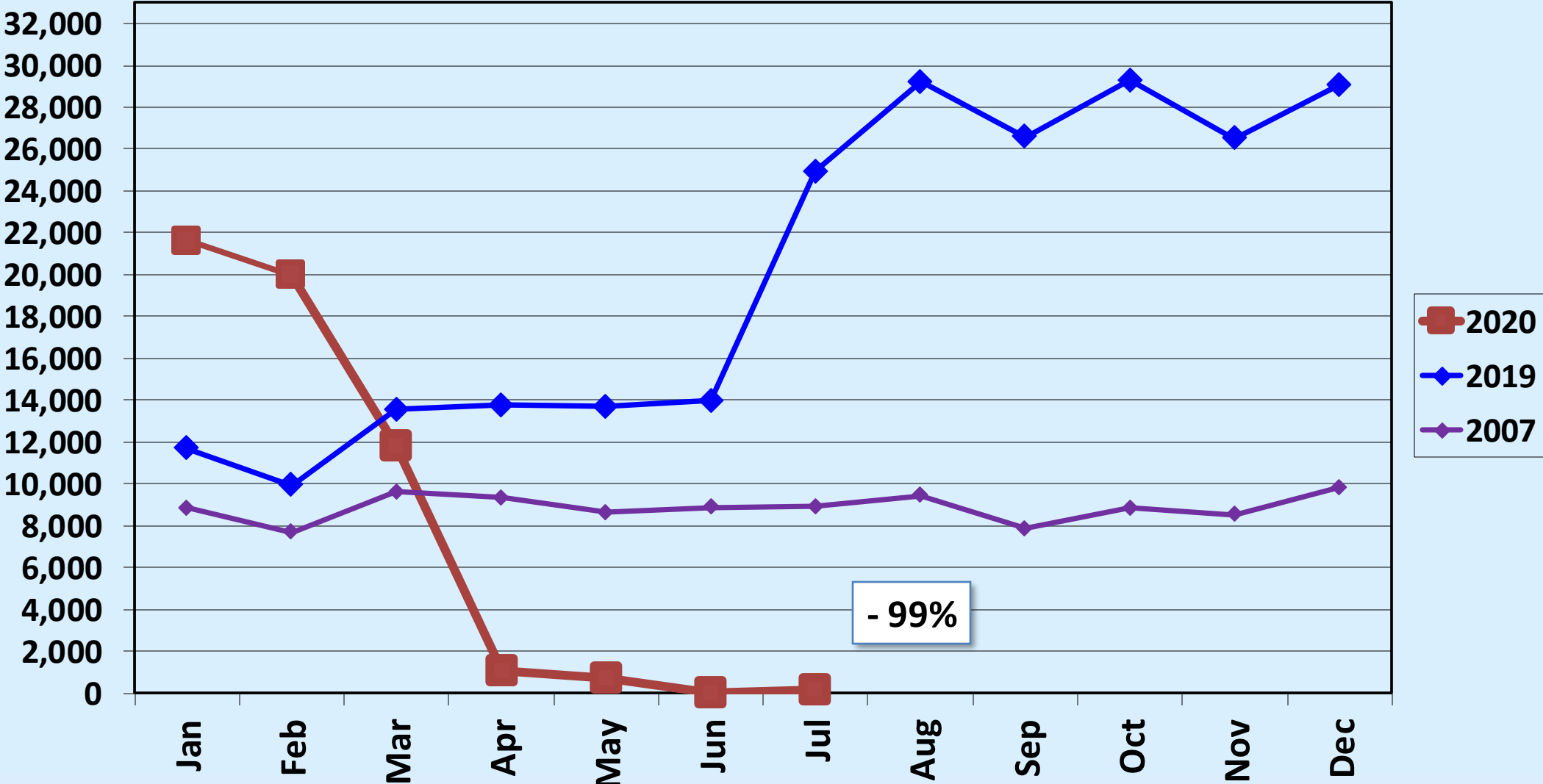


Revenue Passengers American Airlines

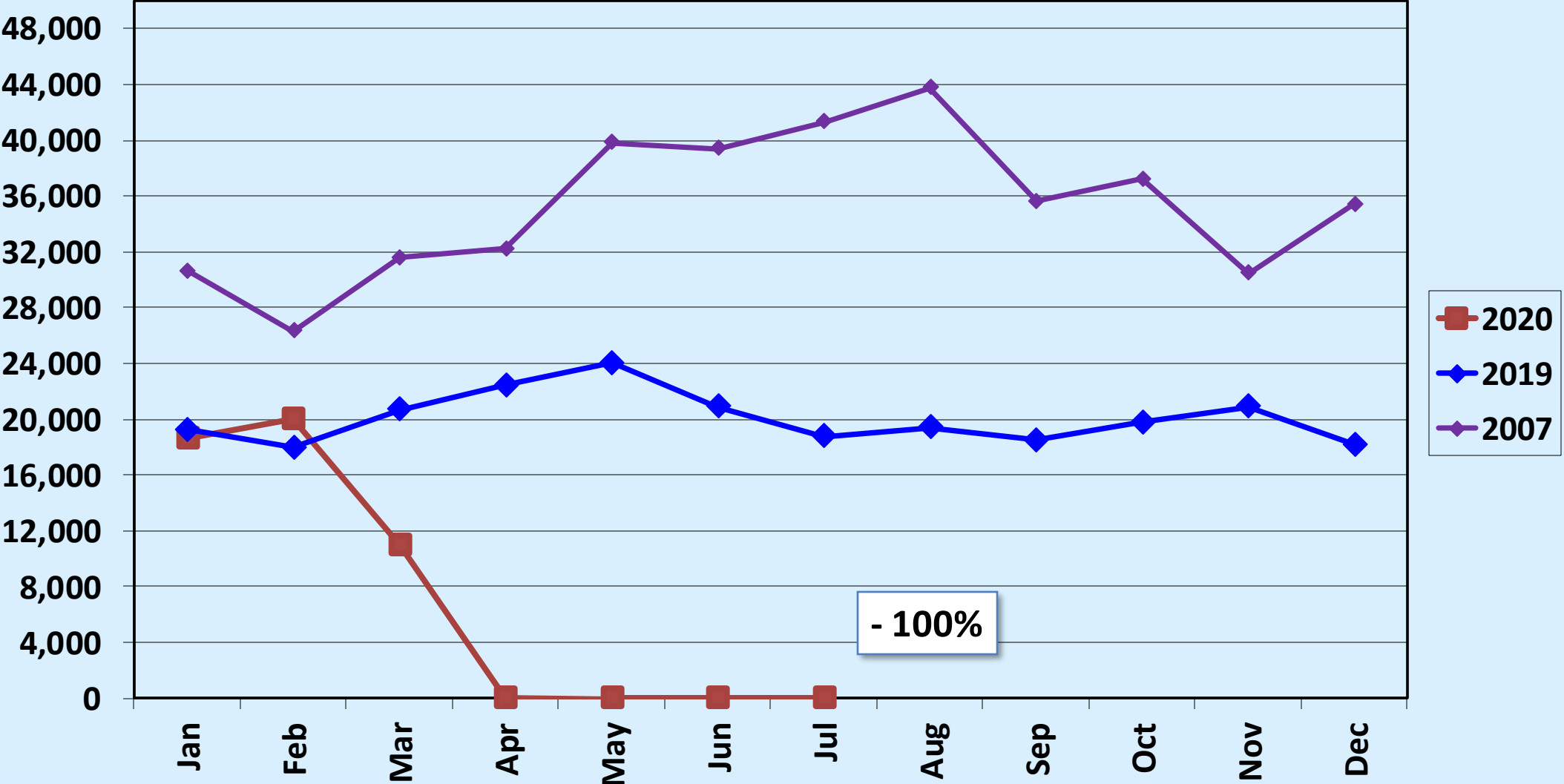
Note: For the purposes of this comparison, American Airlines in CY 2007 includes US Airways/America West.



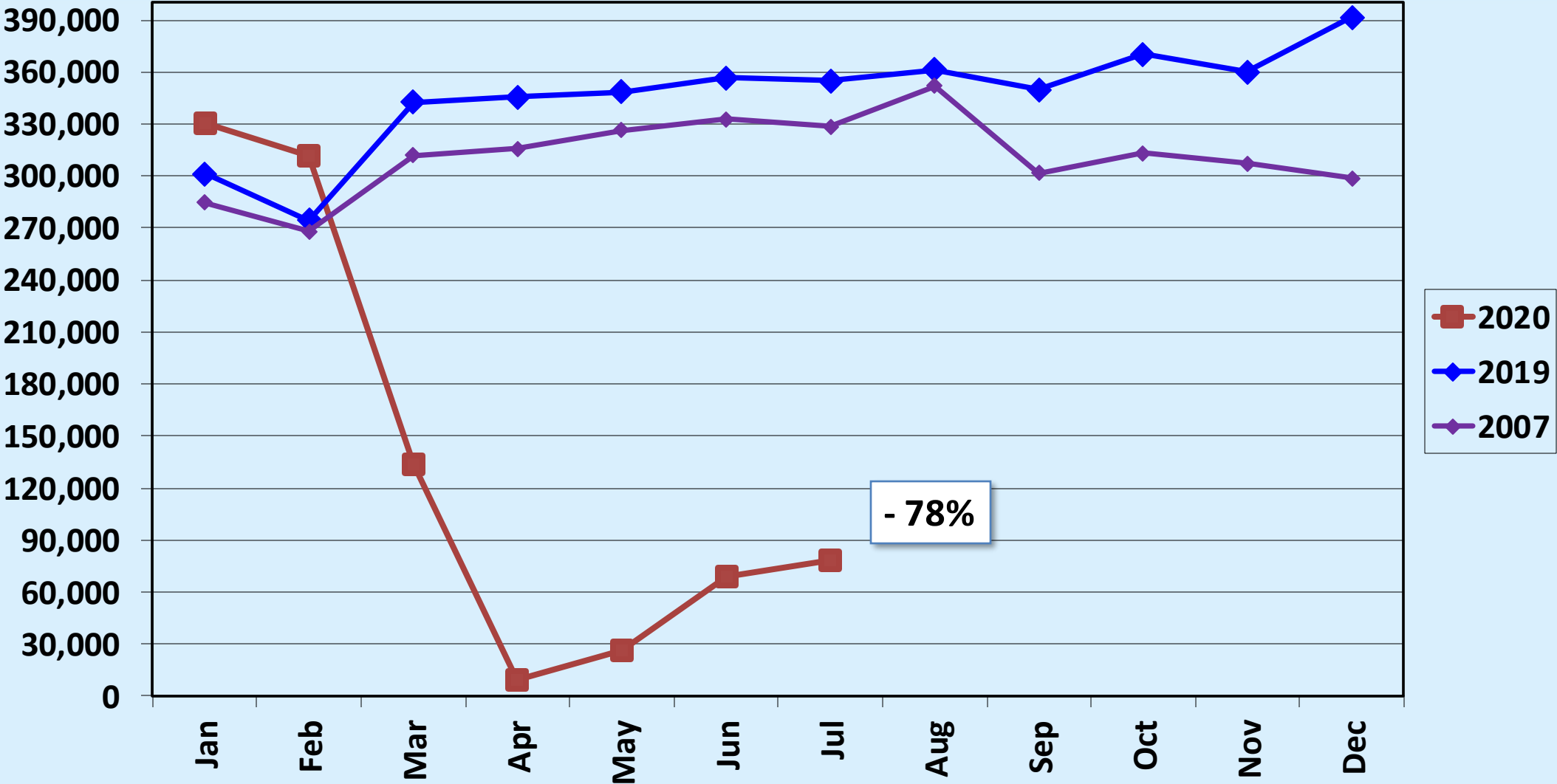
Revenue Passengers Delta Air Lines



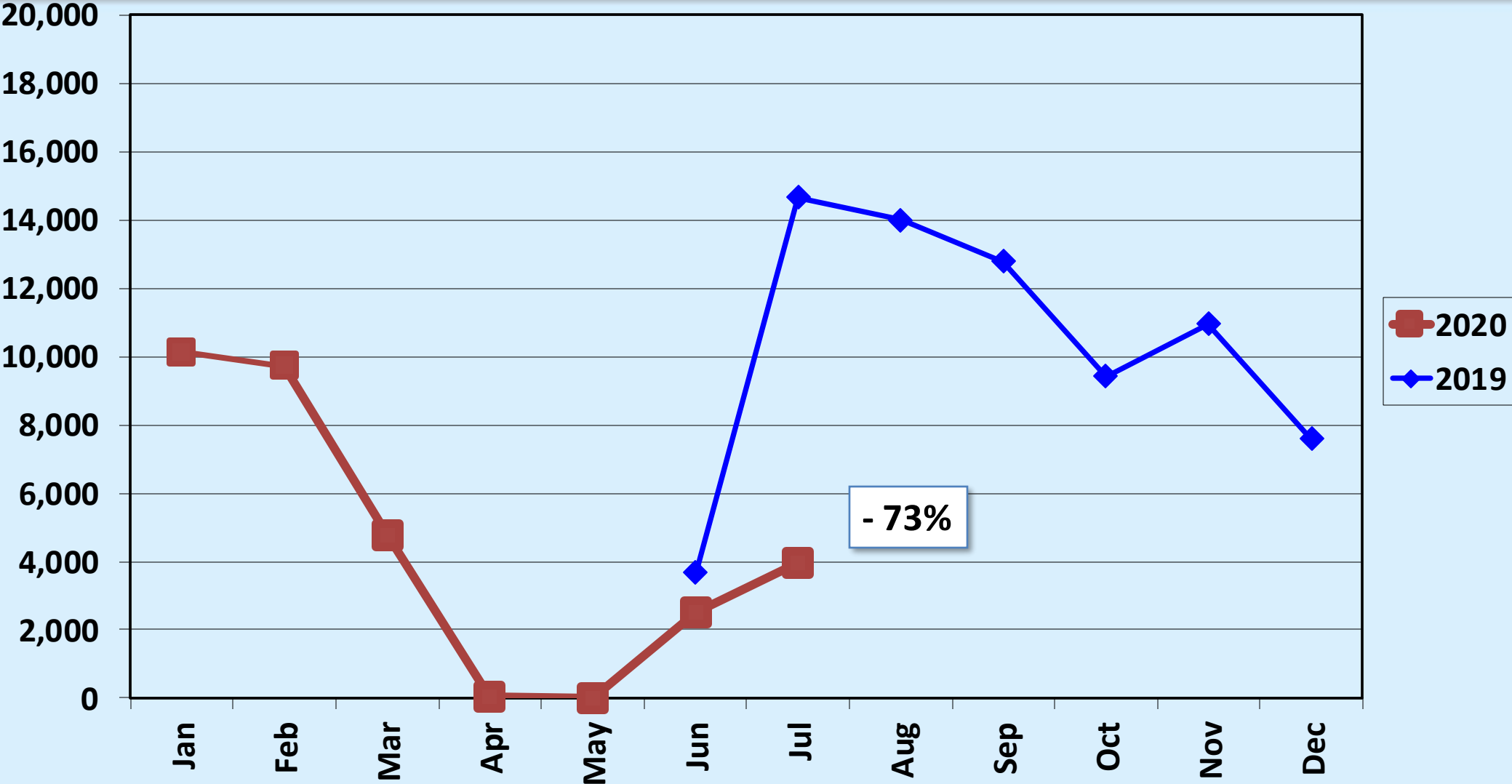
Revenue Passengers JetBlue Airways



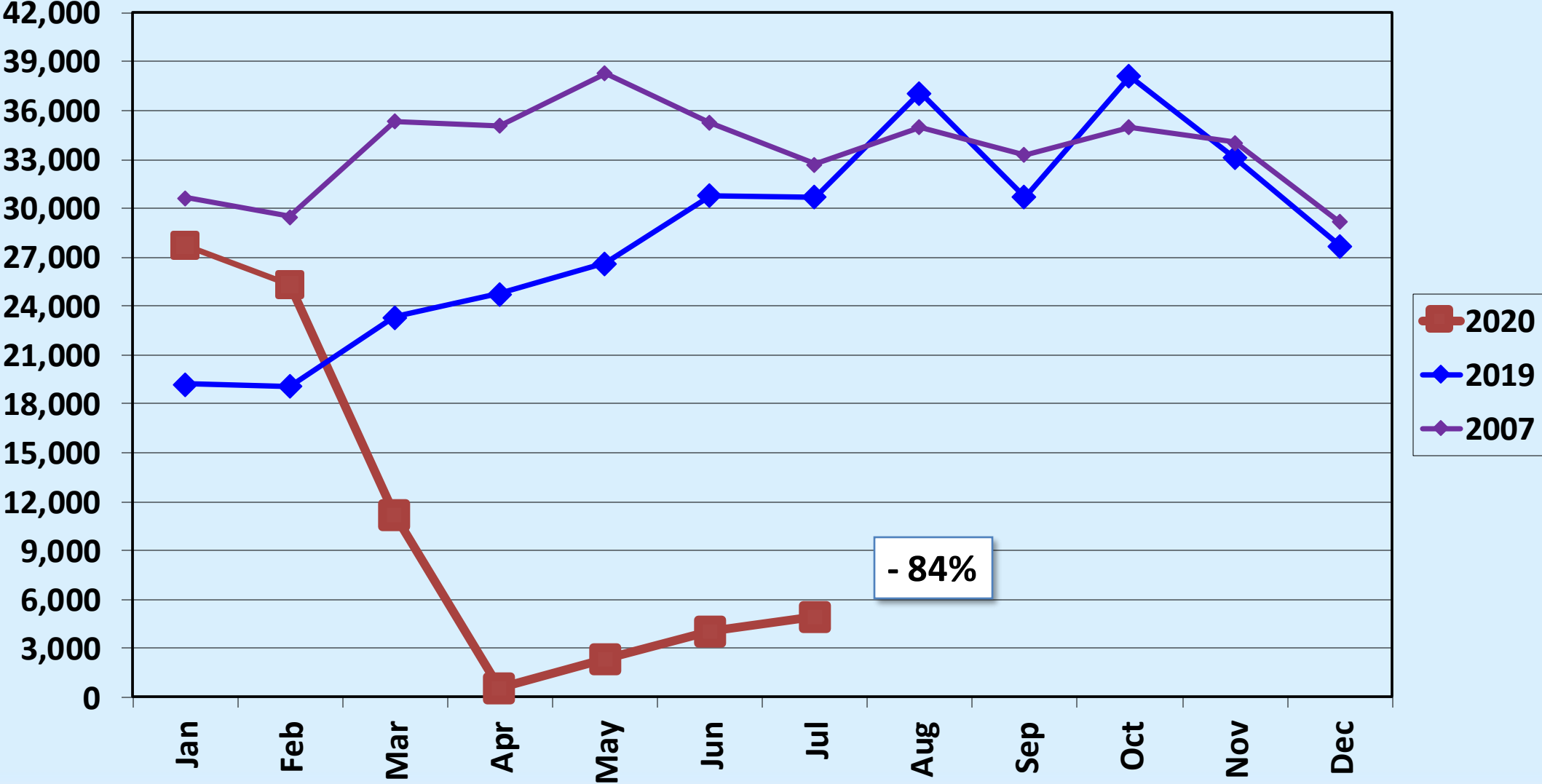
Revenue Passengers Southwest Airlines



Revenue Passengers Spirit Airlines

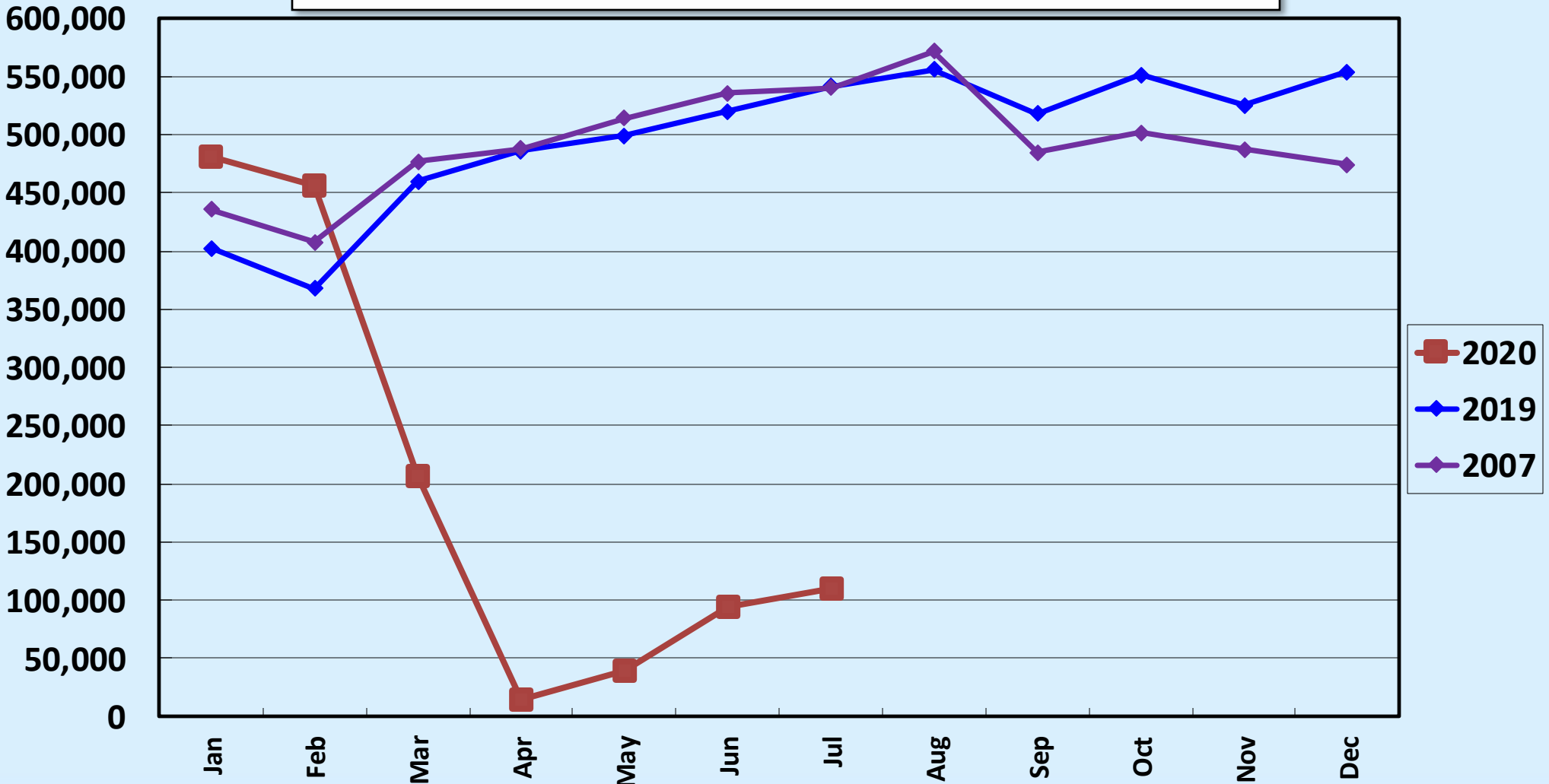


Revenue Passengers United Airlines



Revenue Passengers All Airlines

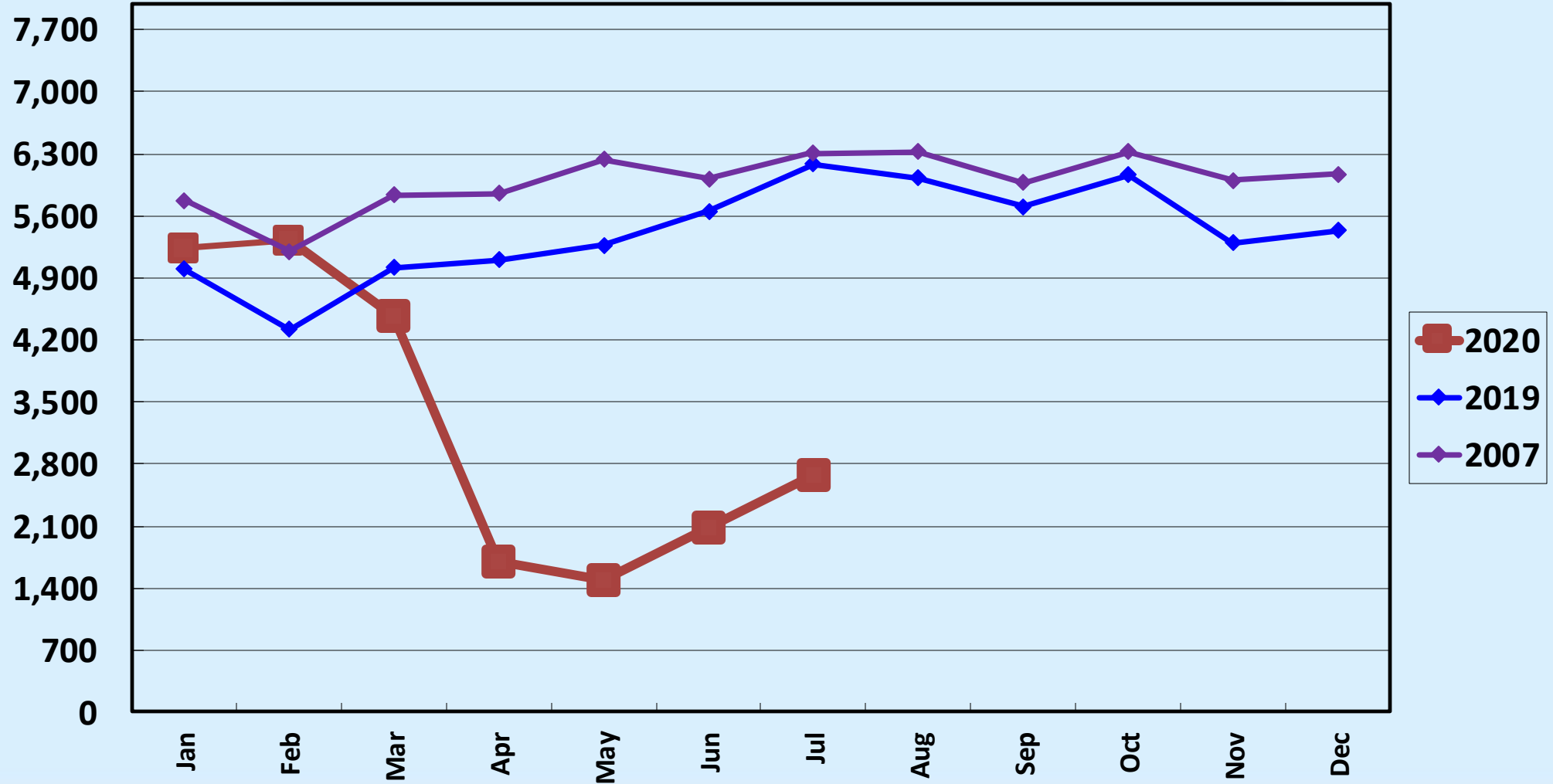
July 2020: - 79.60% MOM; - 79.60% FYTD; - 57.20% CYTD



Air Carrier Operations

All Airlines

July 2020: - 56.61% MOM; - 56.61% FYTD; - 37.11% CYTD



Load Factor: July 2020 v. July 2019

	July 2020			July 2019		
Alaska	Seats: 14,188	Pax: 8,443	Load Factor: 59.51%	Seats: 78,310	Pax: 64,646	Load Factor: 82.55%
American	Seats: 20,960	Pax: 14,655	Load Factor: 69.92%	Seats: 39,952	Pax: 33,119	Load Factor: 82.90%
Delta	Seats: 796	Pax: 138	Load Factor: 17.34%	Seats: 29,504	Pax: 24,935	Load Factor: 84.51%
JetBlue	Seats: 0	Pax: 0	Load Factor: N/A	Seats: 21,312	Pax: 18,790	Load Factor: 88.17%

Load Factor: July 2020 v. July 2019

July 2020

July 2019

Southwest

Seats: 280,474

Pax: 78,418

Load Factor:
27.96%

Seats: 550,718

Pax: 355,089

Load Factor:
64.48%

Spirit

Seats: 7,644

Pax: 3,948

Load Factor:
51.65%

Seats: 25,520

Pax: 14,666

Load Factor:
57.47%

United

Seats: 12,024

Pax: 4,946

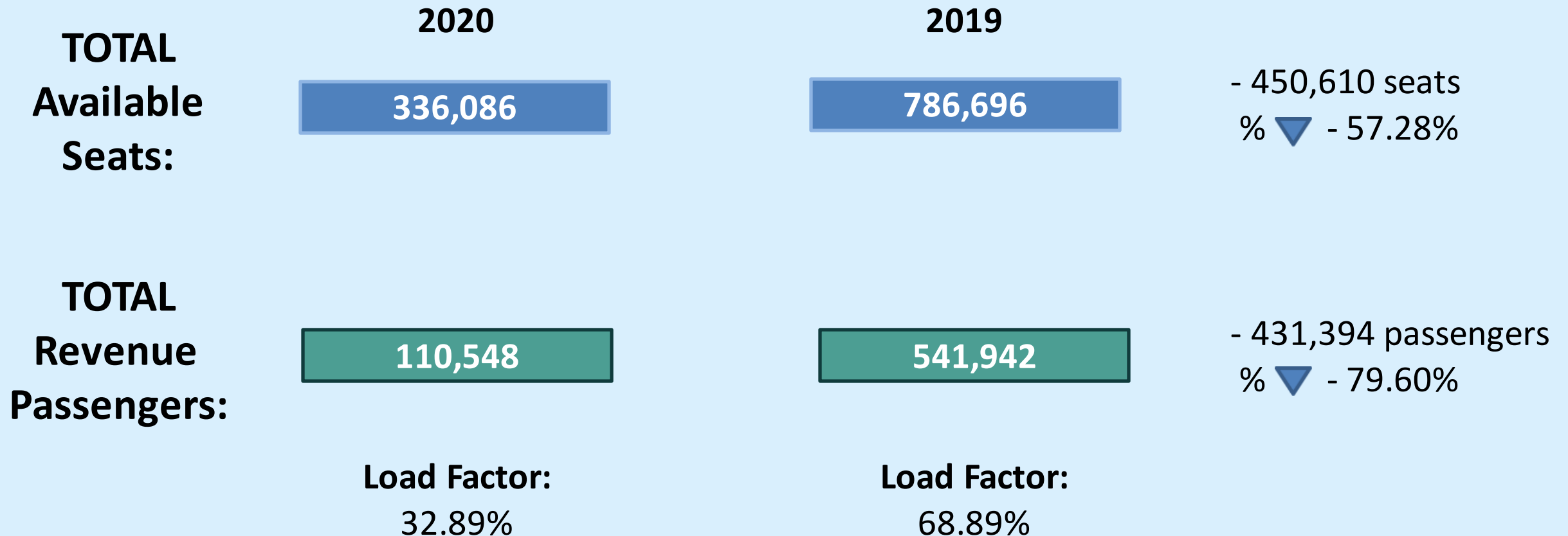
Load Factor:
41.13%

Seats: 41,380

Pax: 30,697

Load Factor:
74.18%

Load Factor: July 2020 v. July 2019



Regional Airport Passenger Statistics

July 2020

BUR

2020	110,548
2019	541,942
%▼	- 79.60%

ONT

2020	176,220
2019	494,966
%▼	- 64.40%

SNA

2020	239,120
2019	945,962
%▼	- 74.70%

LAX

2020	1,523,462
2019	8,469,815
%▼	- 82.01%

LGB

2020	40,406
2019	319,296
%▼	- 87.00%