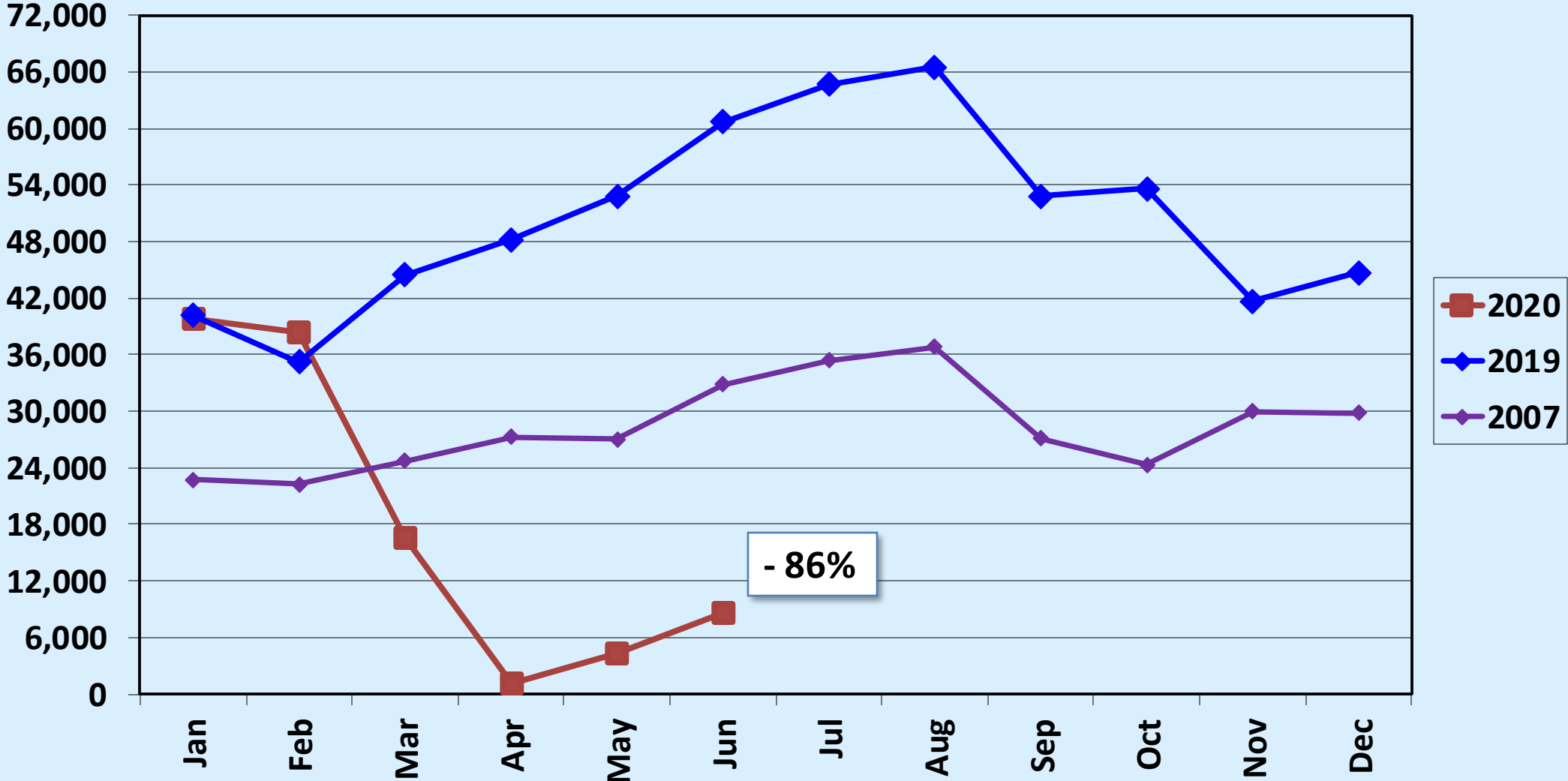




# Passenger Statistics Report June 2020

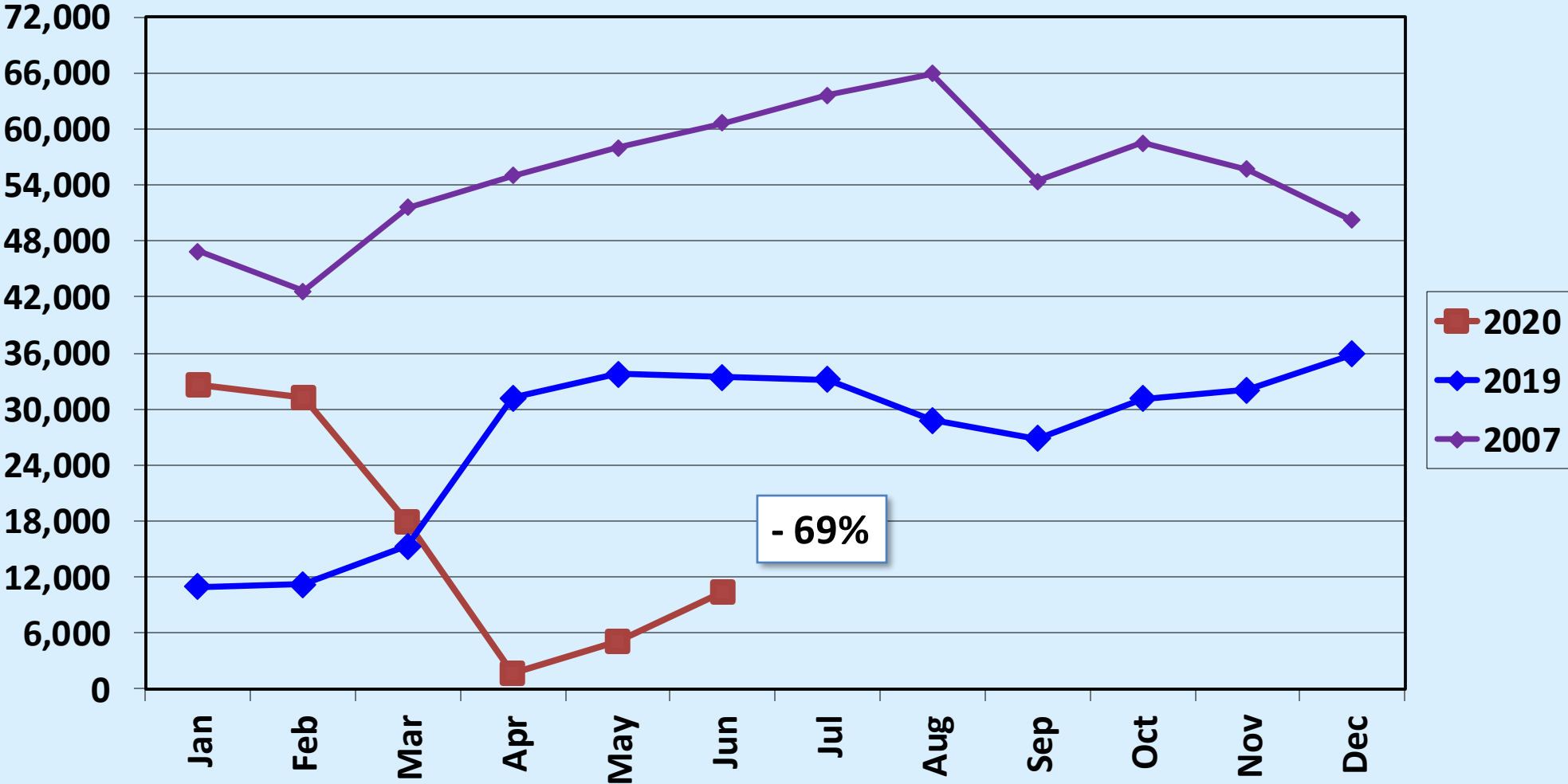
Presented to  
Burbank-Glendale-Pasadena  
Airport Authority  
August 17, 2020

# Revenue Passengers Alaska Airlines

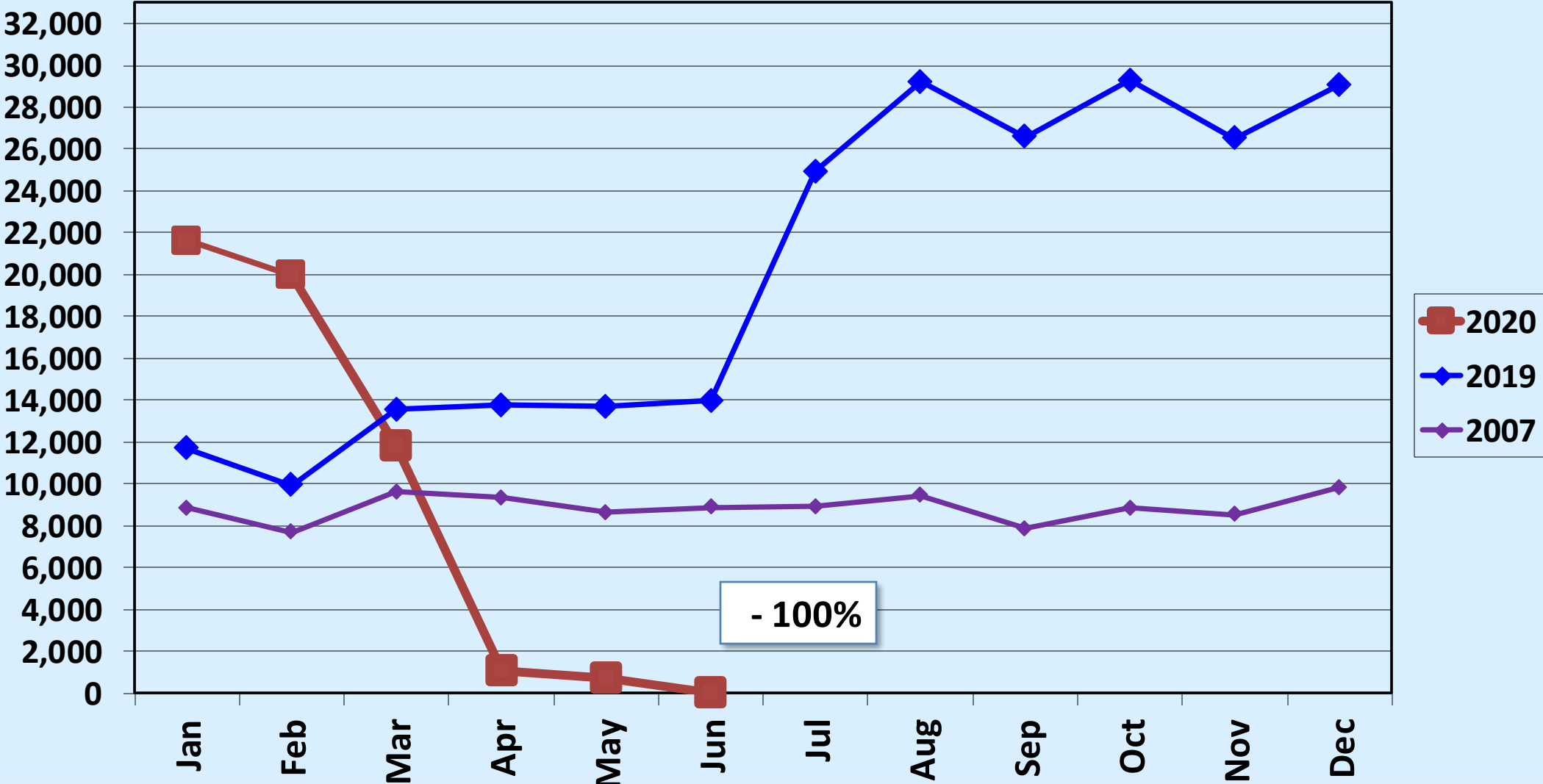


# Revenue Passengers American Airlines

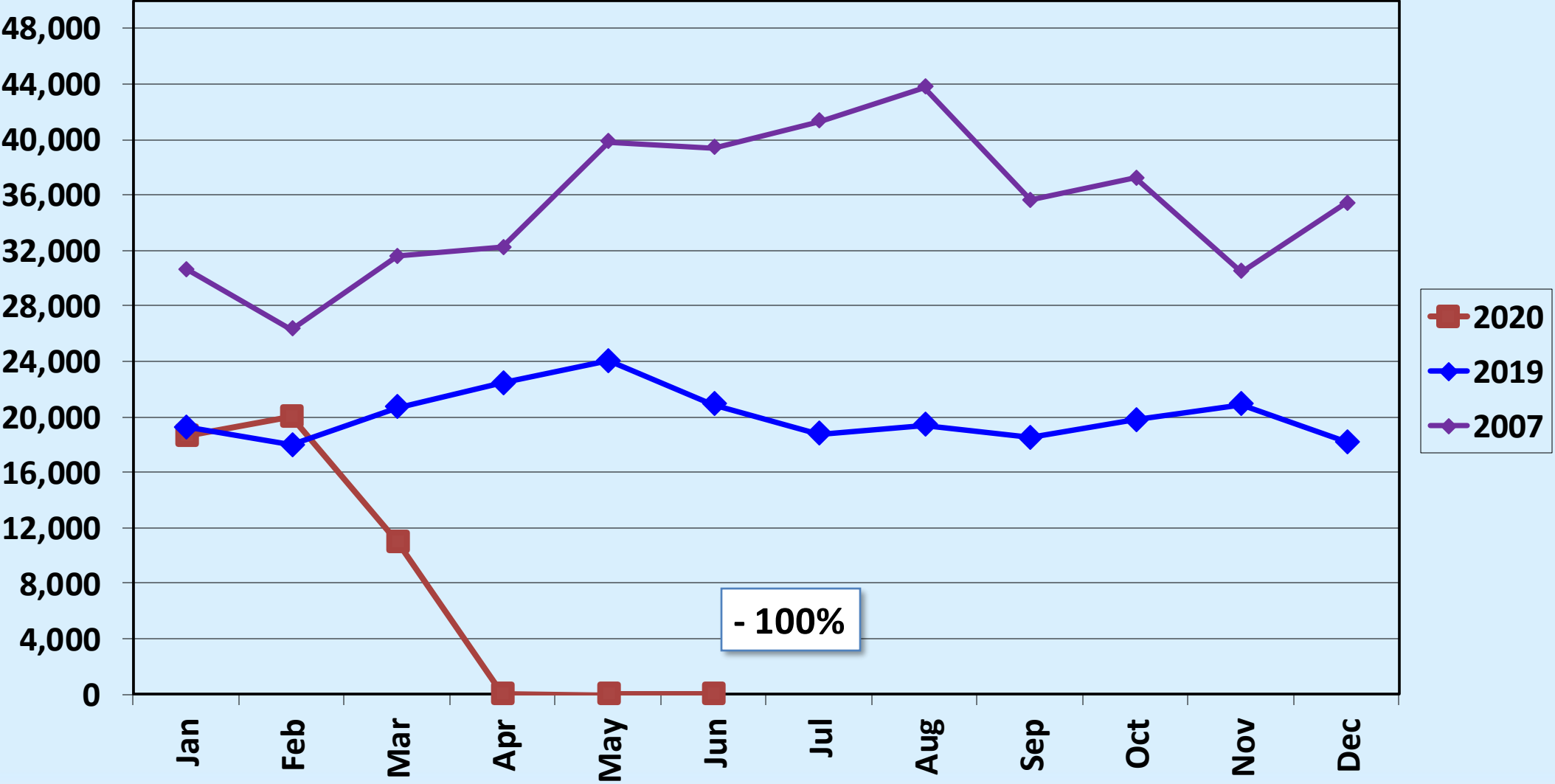
*Note: For the purposes of this comparison, American Airlines in CY 2007 includes US Airways/America West.*



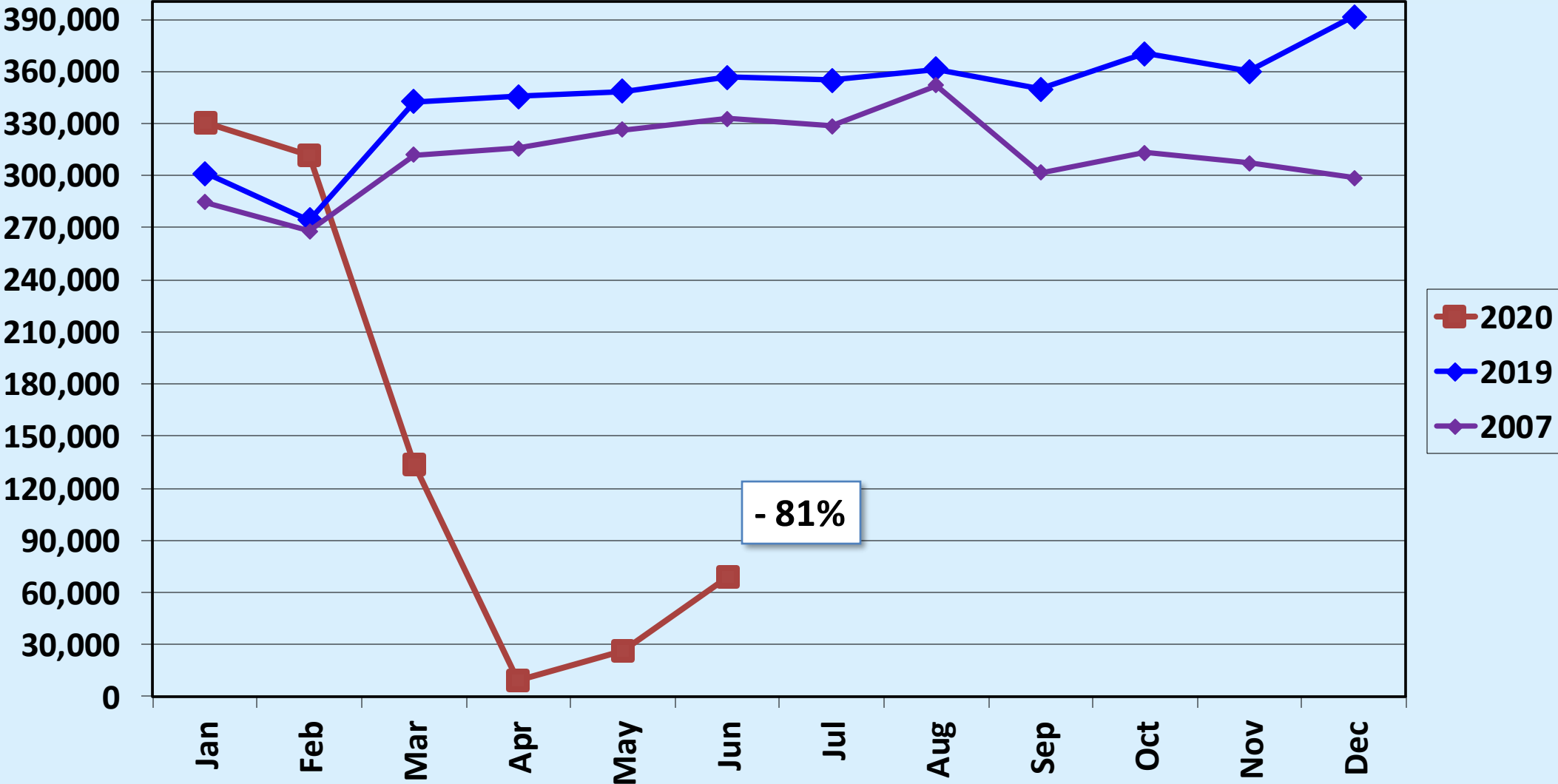
# Revenue Passengers Delta Air Lines



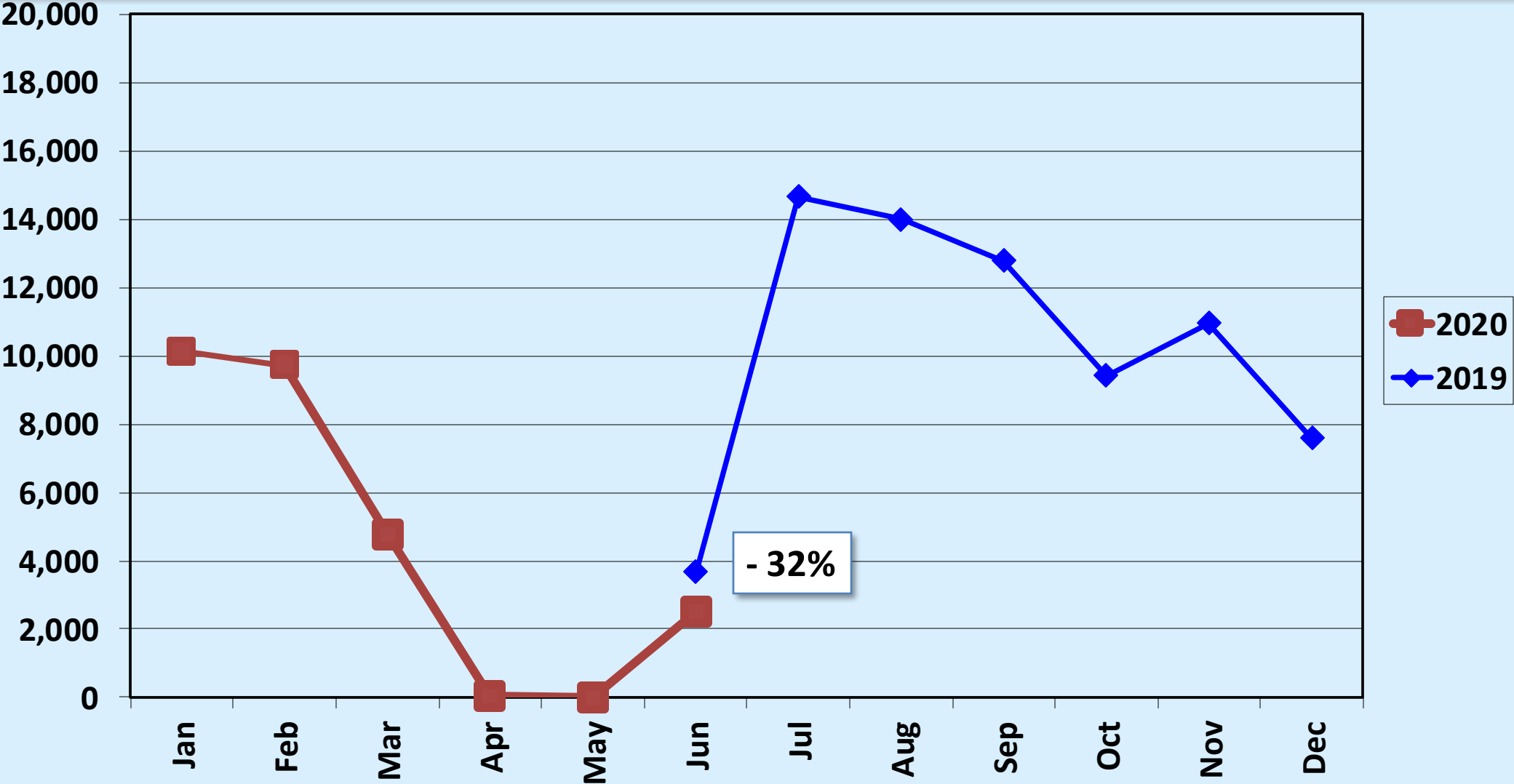
# Revenue Passengers JetBlue Airways



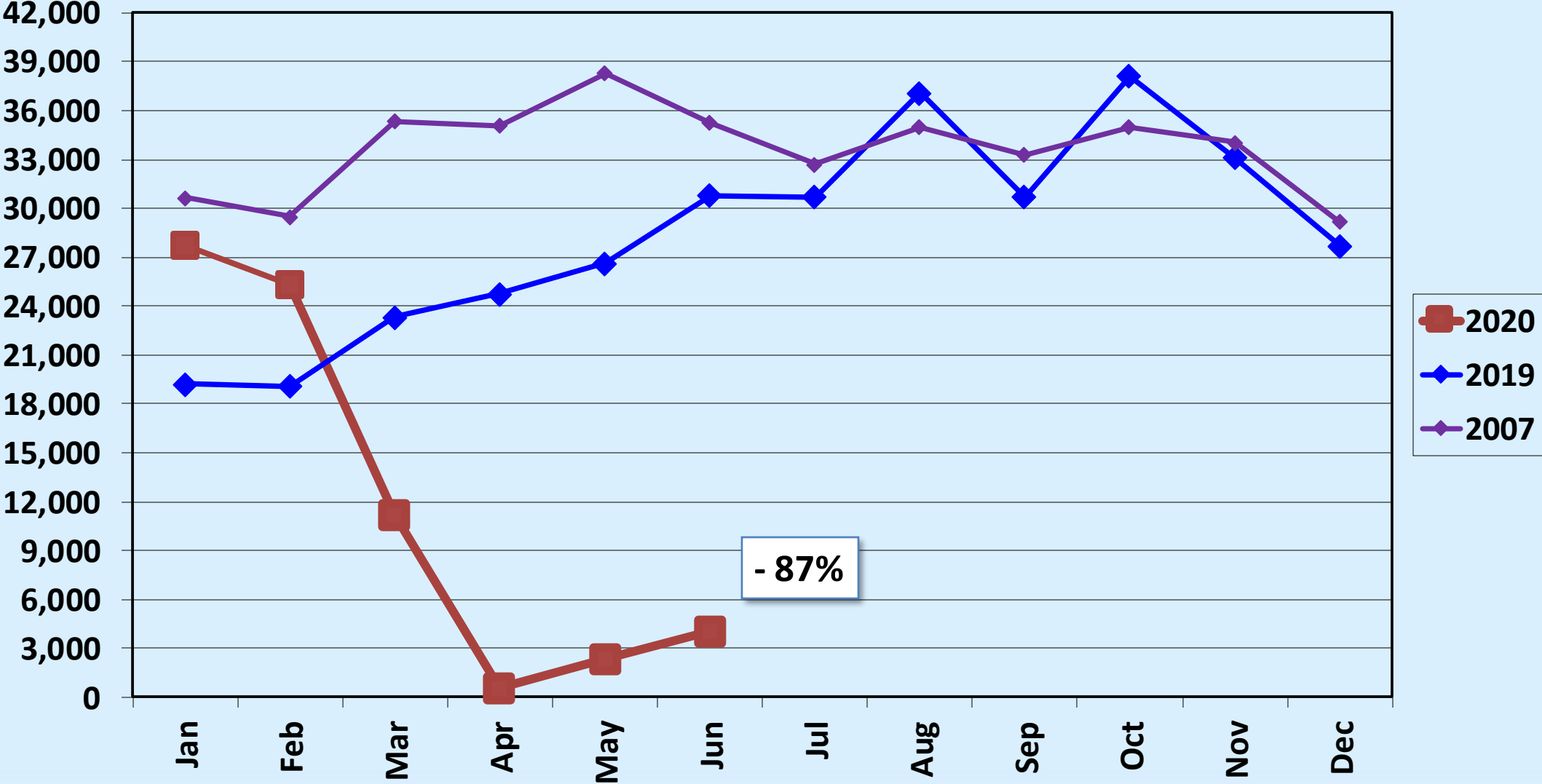
# Revenue Passengers Southwest Airlines



# Revenue Passengers Spirit Airlines



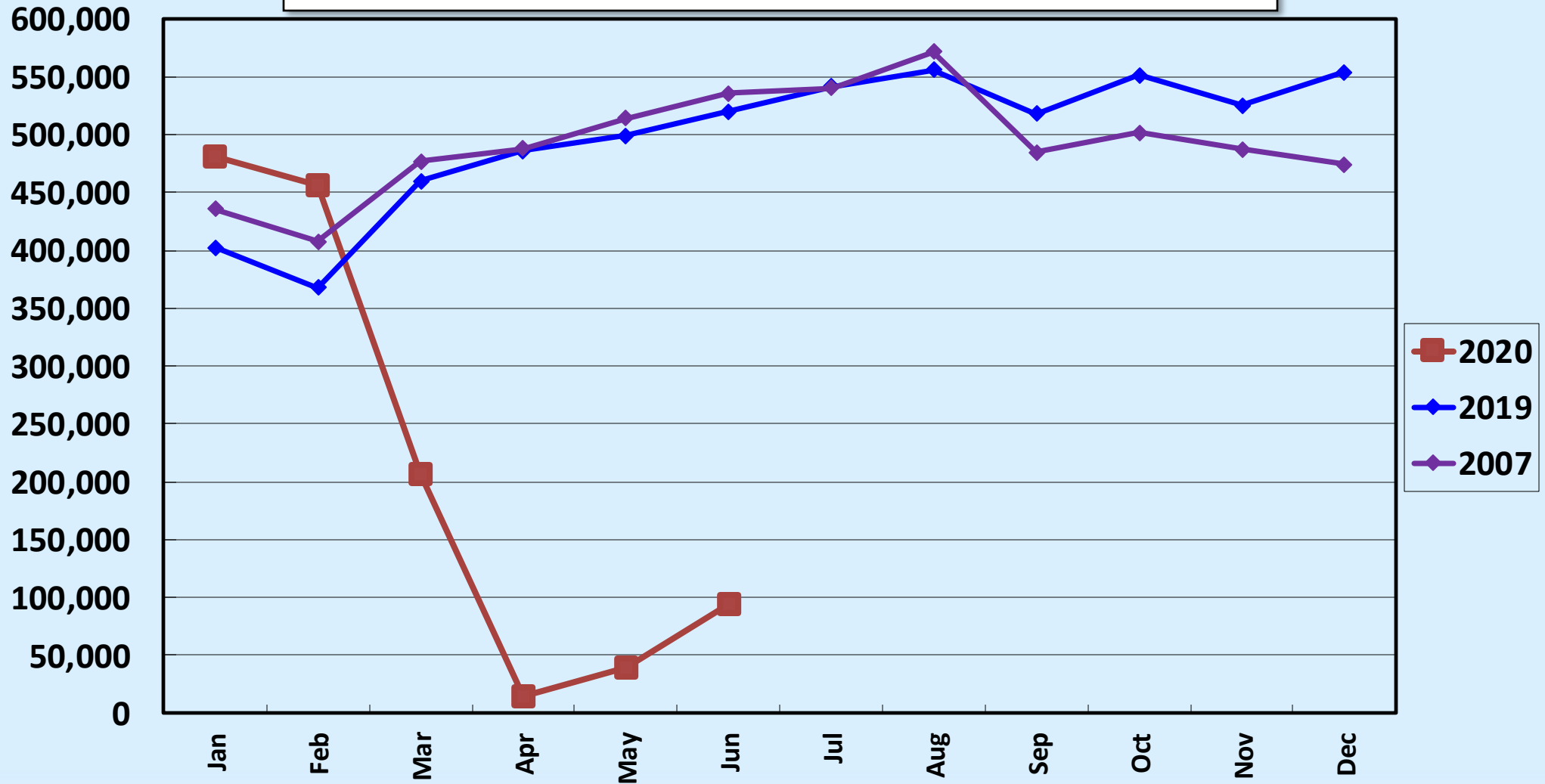
# Revenue Passengers United Airlines





# REVENUE PASSENGERS ALL AIRLINES

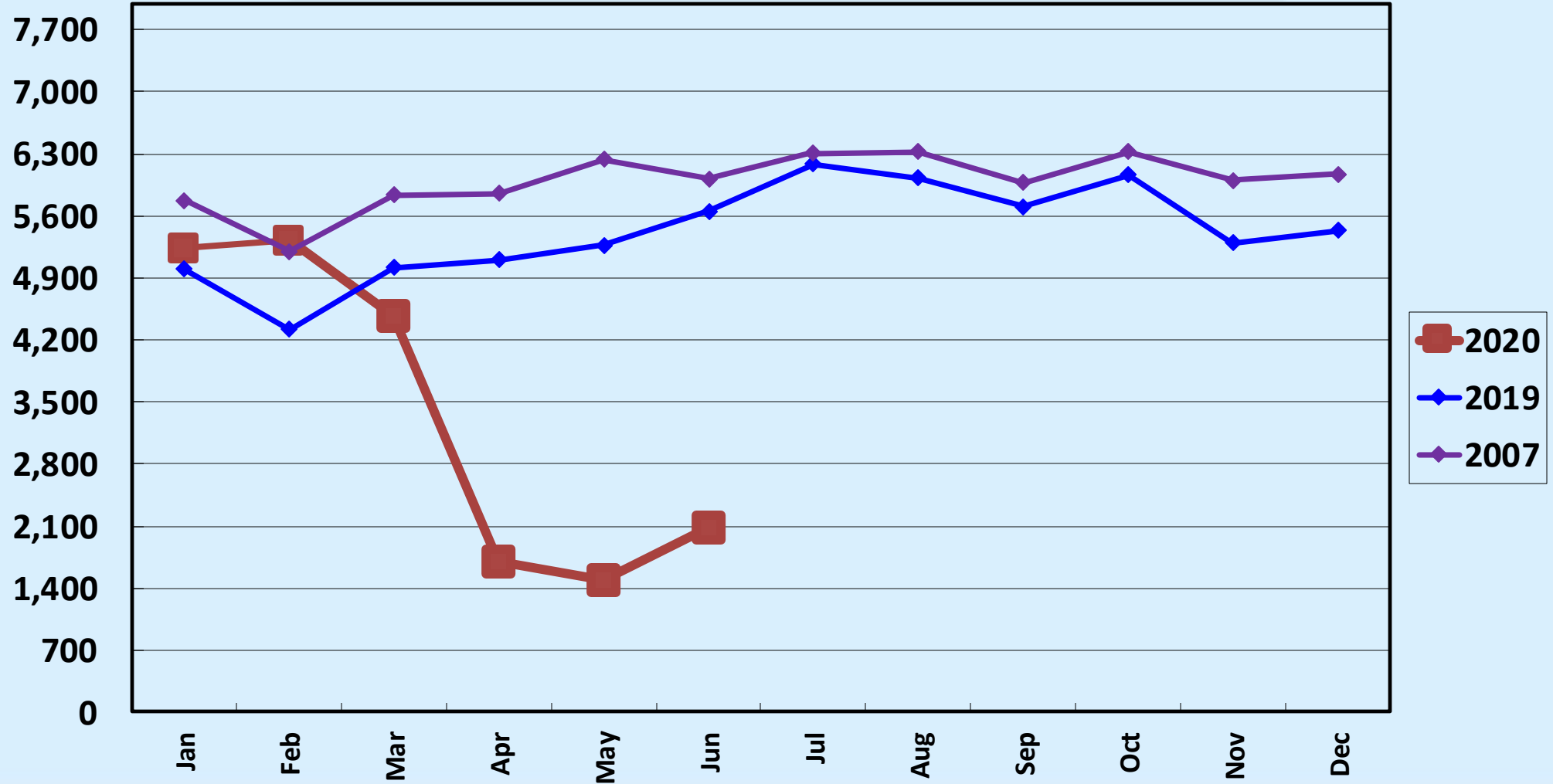
June 2020: - 81.76% MOM; - 17.36% FYTD; - 52.76% CYTD



# AIR CARRIER OPERATIONS

## ALL AIRLINES

JUNE 2020: - 63.22% MOM; - 7.68% FYTD; - 33.14% CYTD



# Load Factor: June 2020 v. June 2019

	June 2020			June 2019		
<b>Alaska</b>	<b>Seats: 16,264</b>	<b>Pax: 8,658</b>	<b>Load Factor:</b> 53.23%	<b>Seats: 73,434</b>	<b>Pax: 60,648</b>	<b>Load Factor:</b> 82.59%
<b>American</b>	<b>Seats: 13,660</b>	<b>Pax: 10,392</b>	<b>Load Factor:</b> 76.08%	<b>Seats: 38,542</b>	<b>Pax: 33,422</b>	<b>Load Factor:</b> 86.72%
<b>Delta</b>	<b>Seats: 0</b>	<b>Pax: 0</b>	<b>Load Factor:</b> N/A	<b>Seats: 17,024</b>	<b>Pax: 13,992</b>	<b>Load Factor:</b> 82.19%
<b>JetBlue</b>	<b>Seats: 0</b>	<b>Pax: 0</b>	<b>Load Factor:</b> N/A	<b>Seats: 22,500</b>	<b>Pax: 20,907</b>	<b>Load Factor:</b> 92.92%

# Load Factor: June 2020 v. June 2019

June 2020

June 2019

**Southwest**

<b>Seats:</b>	<b>208,408</b>
<b>Pax:</b>	<b>69,244</b>

**Load Factor:**  
33.23%

<b>Seats:</b>	<b>511,724</b>
<b>Pax:</b>	<b>356,781</b>

**Load Factor:**  
69.72%

**Spirit**

<b>Seats:</b>	<b>3,480</b>
<b>Pax:</b>	<b>2,503</b>

**Load Factor:**  
71.93%

<b>Seats:</b>	<b>9,570</b>
<b>Pax:</b>	<b>3,681</b>

**Load Factor:**  
38.46%

**United**

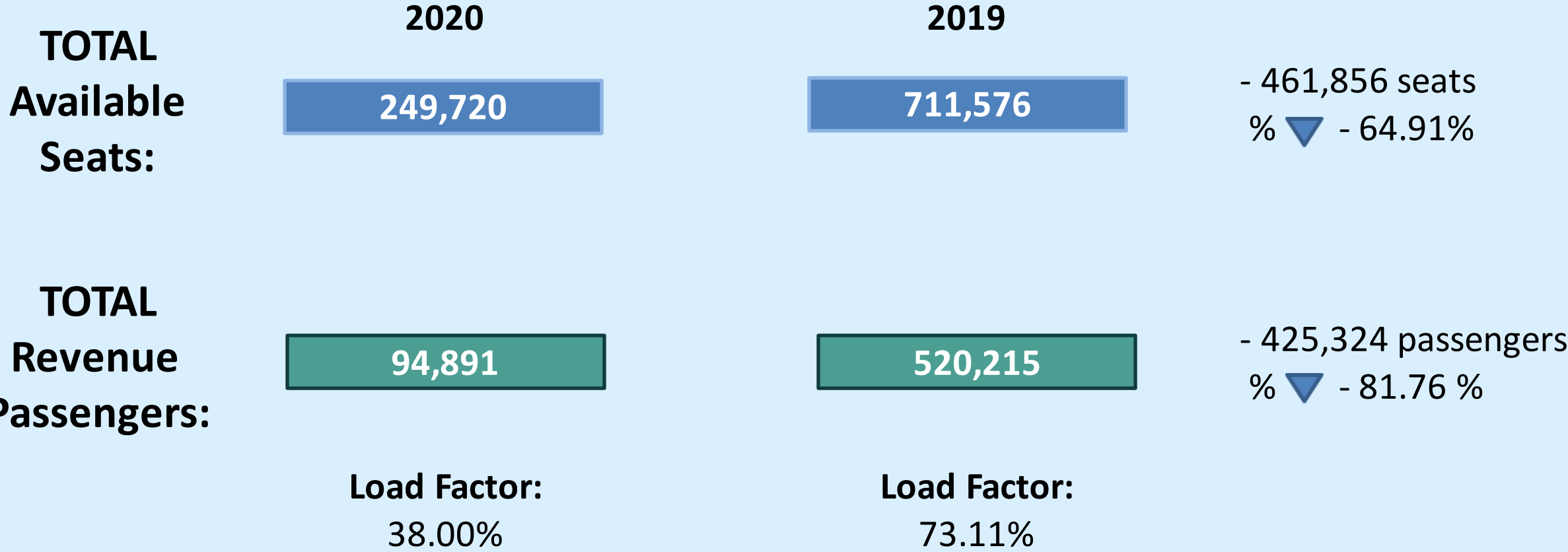
<b>Seats:</b>	<b>7,908</b>
<b>Pax:</b>	<b>4,094</b>

**Load Factor:**  
51.77 %

<b>Seats:</b>	<b>38,782</b>
<b>Pax:</b>	<b>30,784</b>

**Load Factor:**  
79.38%

# Load Factor: June 2020 v. June 2019



# Regional Airport Passenger Statistics

## June 2020

### BUR

2020	94,891
2019	520,215
%▼	- 81.76%

### ONT

2020	142,029
2019	477,681
%▼	- 70.27%

### SNA

2020	181,486
2019	918,810
%▼	- 80.25%

### LAX

2020	1,033,861
2019	8,035,567
%▼	- 87.13%

### LGB

2020	*
2019	306,937
%▼	- %

*\*Data not available as of 8/06/2020*



# AIR CARRIER OPERATIONS

## ALL AIRLINES

### BREAKDOWN - MONTHLY TOTALS

	JAN	FEB	MAR	APR	MAY	JUN	JUL	AUG	SEP	OCT	NOV	DEC
<b>2020</b>	5,231	5,319	4,472	1,695	1,498	2,079						
<b>2019</b>	4,996	4,315	5,015	5,104	5,270	5,652						
<b>2018</b>	4,646	4,163	4,673	4,665	4,820	4,639						
<b>2007</b>	5,777	5,203	5,834	5,857	6,237	6,023						