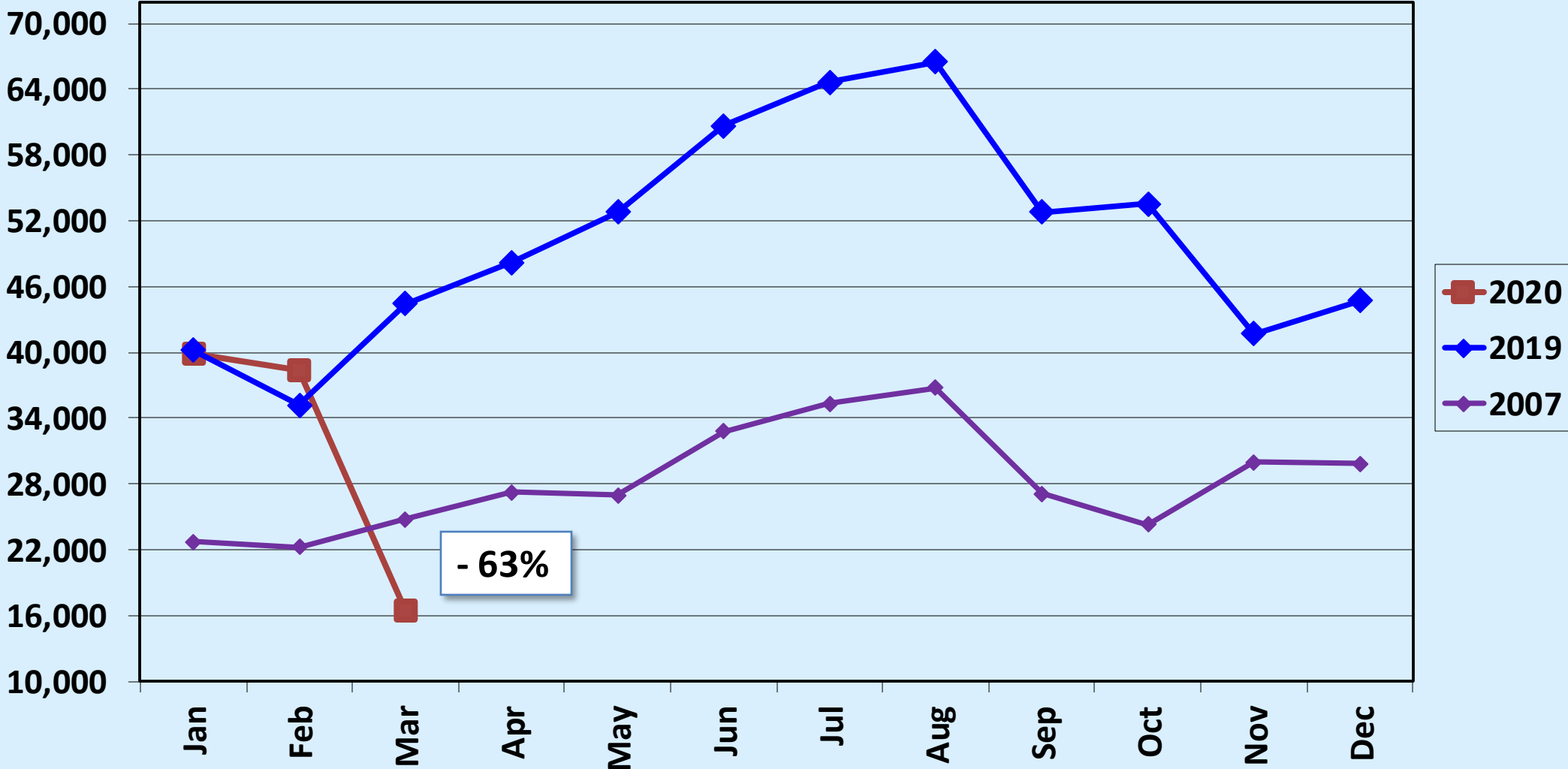




Passenger Statistics Report March 2020

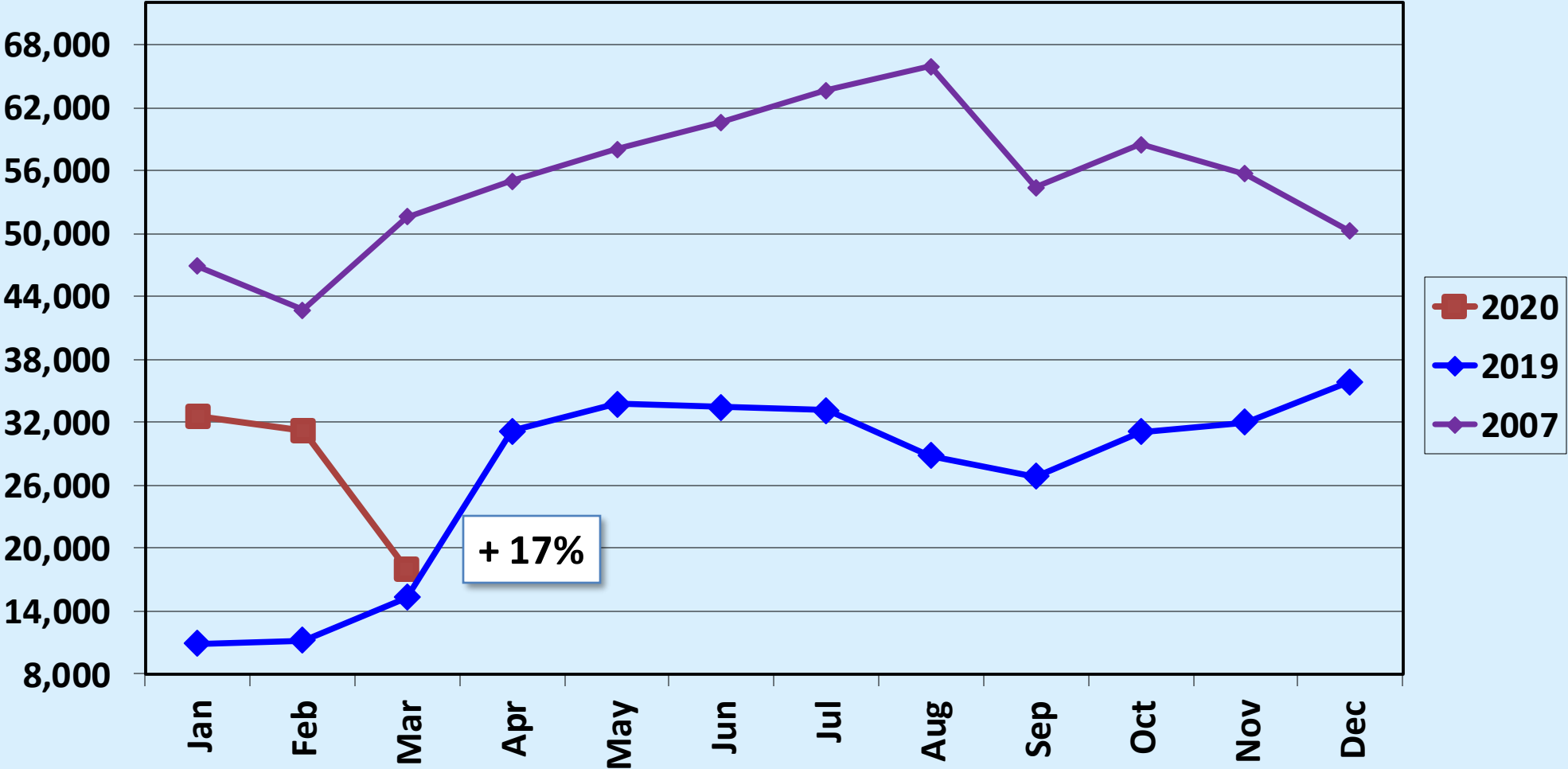
Presented to
Burbank-Glendale-Pasadena
Airport Authority
May 18, 2020

Revenue Passengers Alaska Airlines

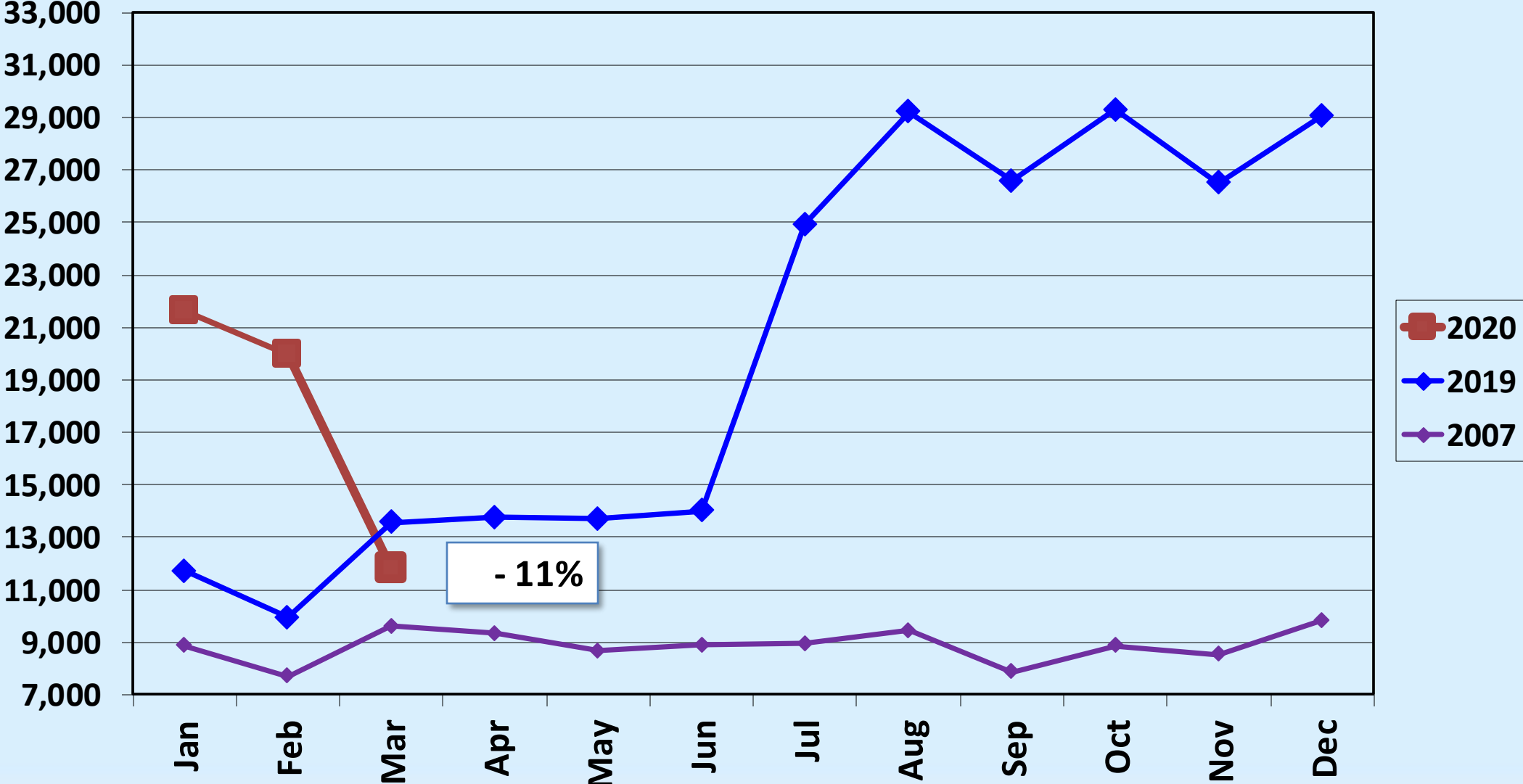


Revenue Passengers American Airlines

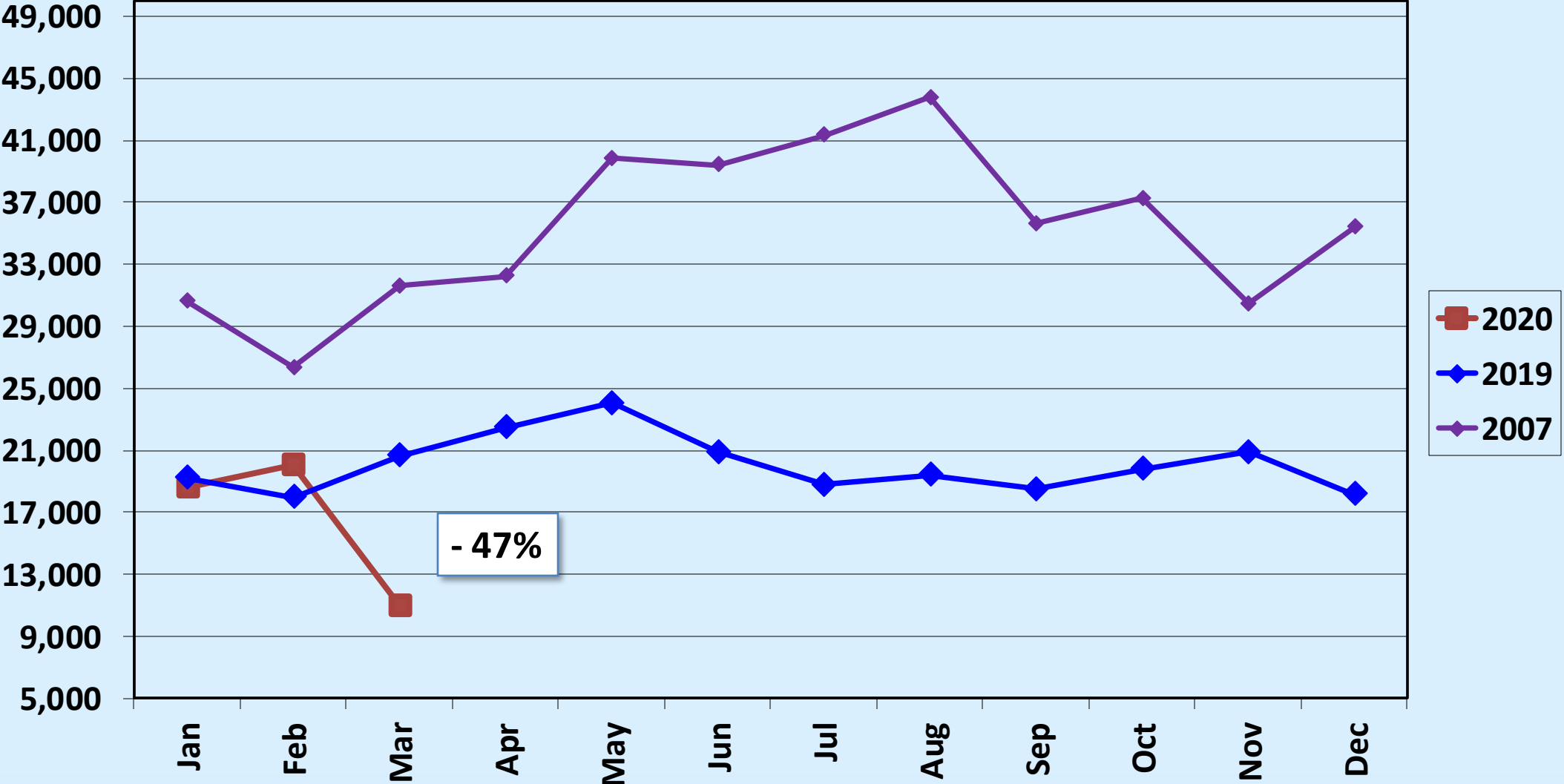
Note: For the purposes of this comparison, American Airlines in CY 2007 includes US Airways/America West.



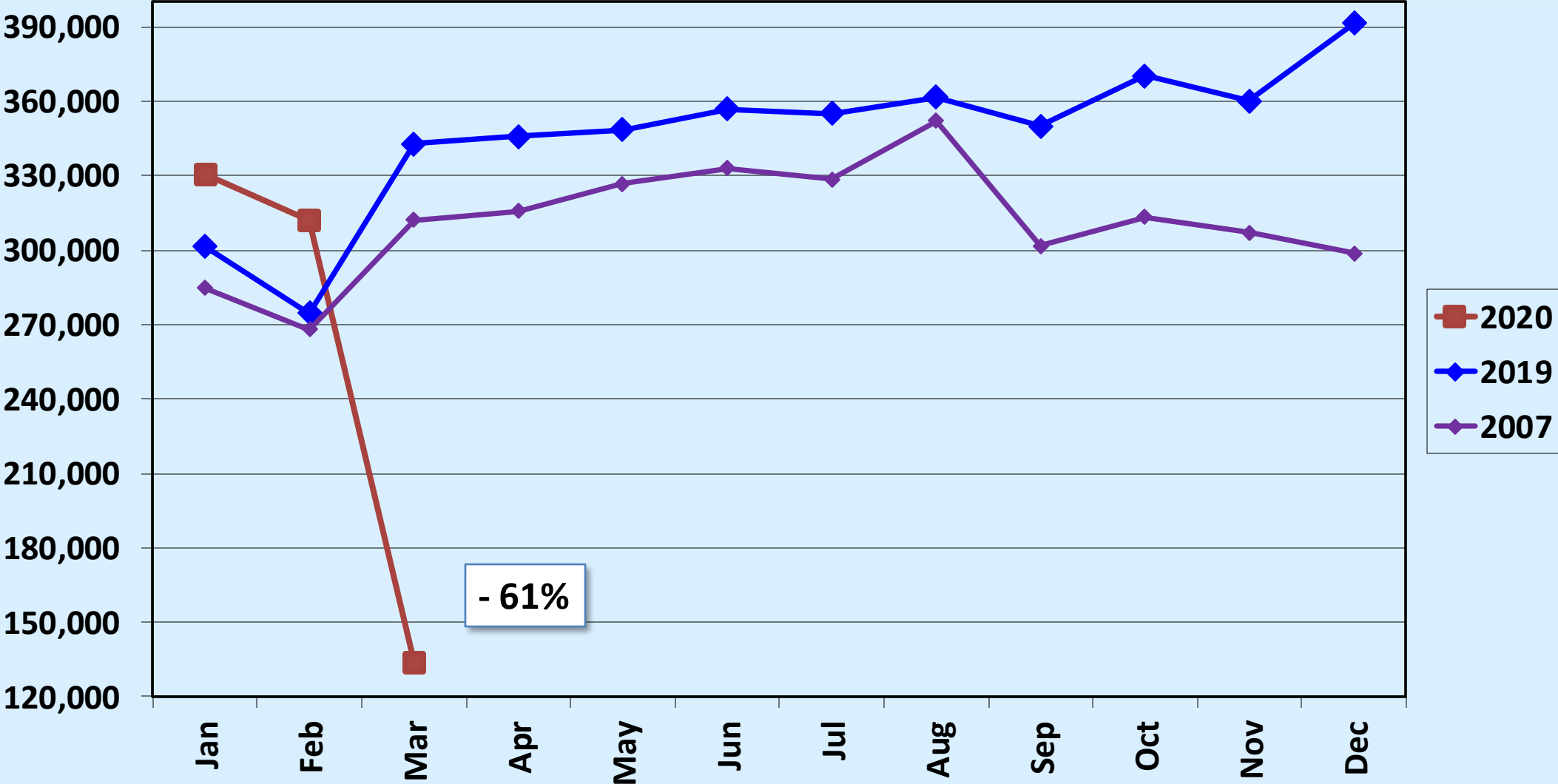
Revenue Passengers Delta Air Lines



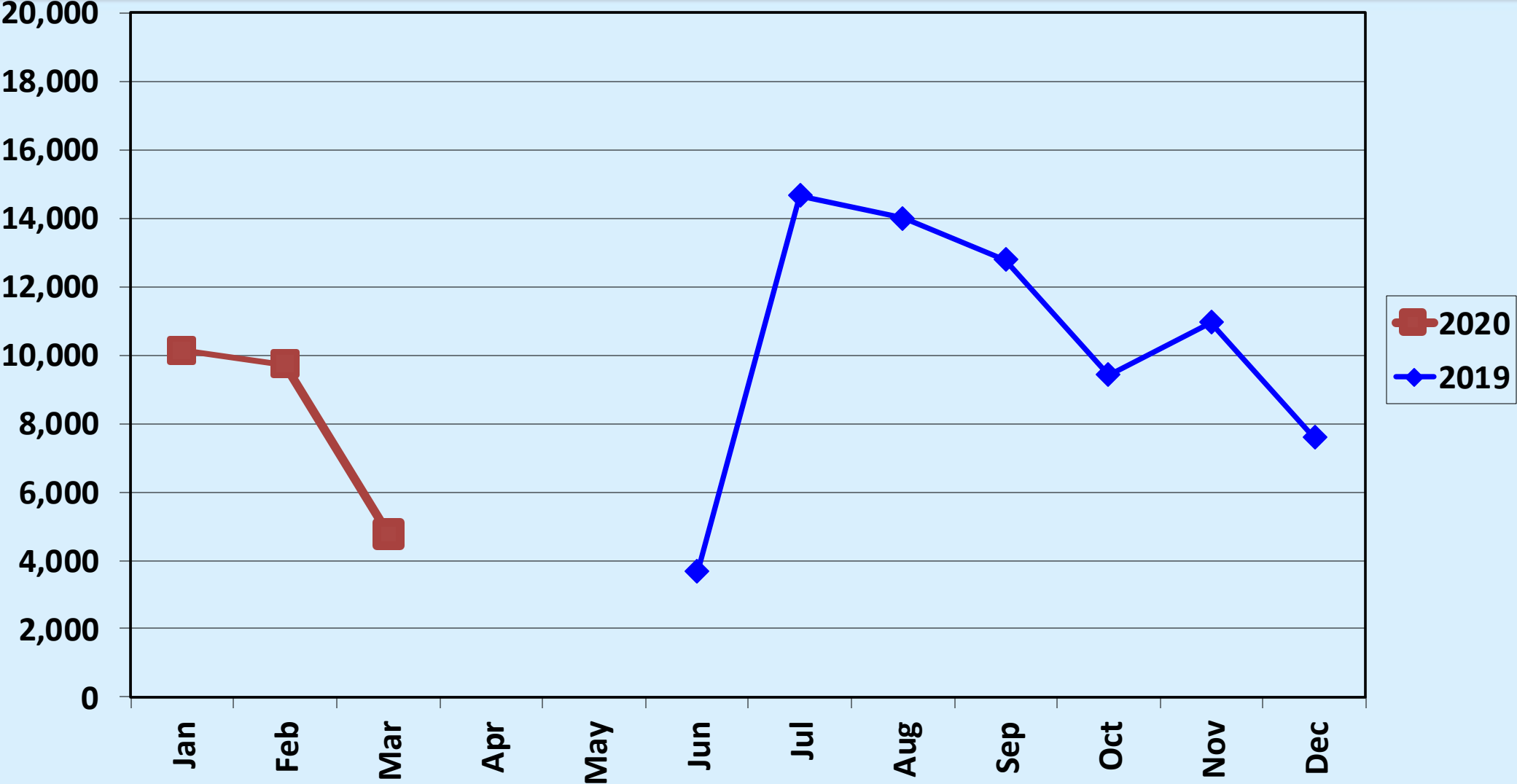
Revenue Passengers Jetblue Airways



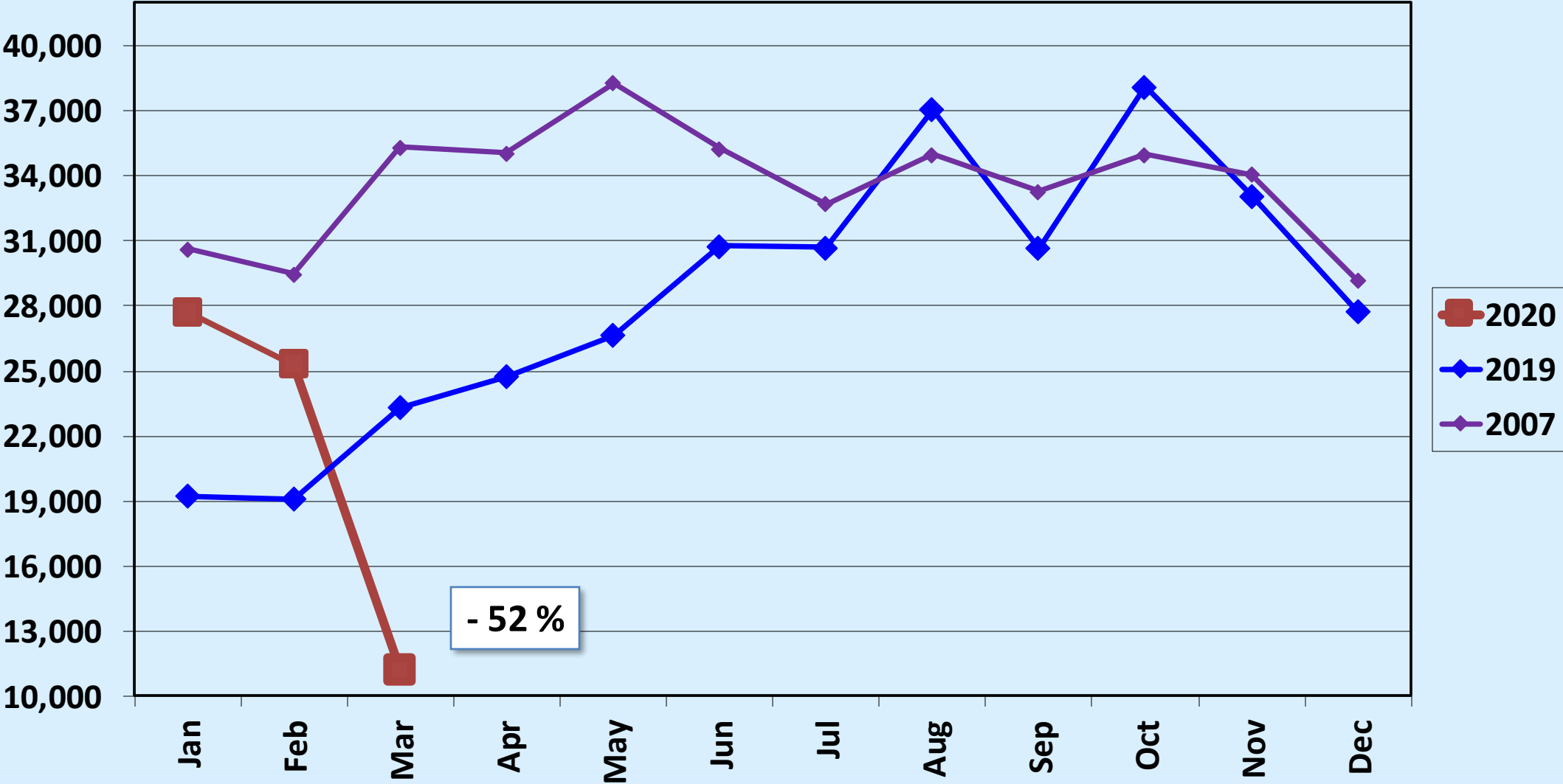
Revenue Passengers Southwest Airlines



Revenue Passengers Spirit Airlines

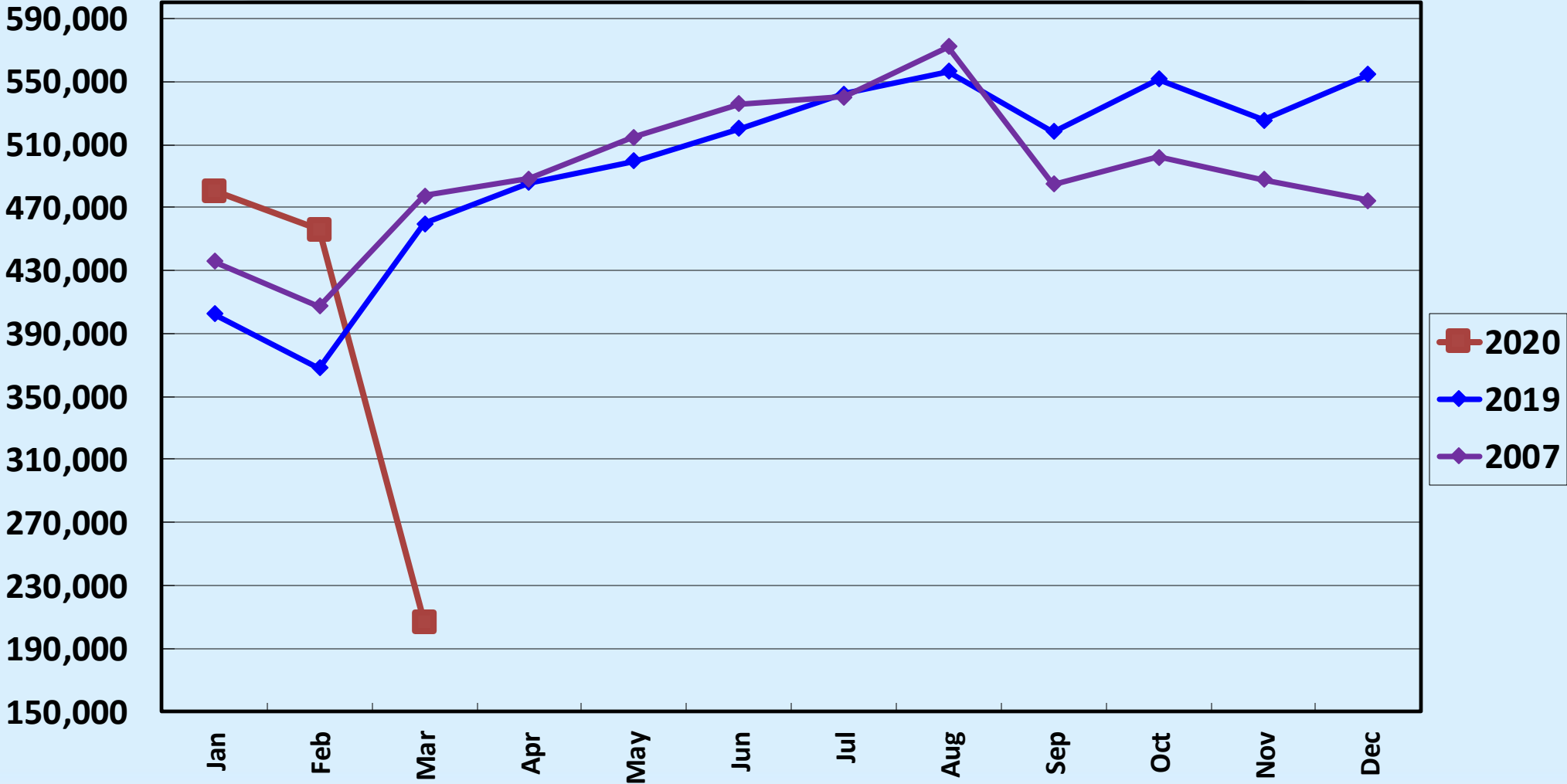


Revenue Passengers United Airlines



Revenue Passengers All Airlines

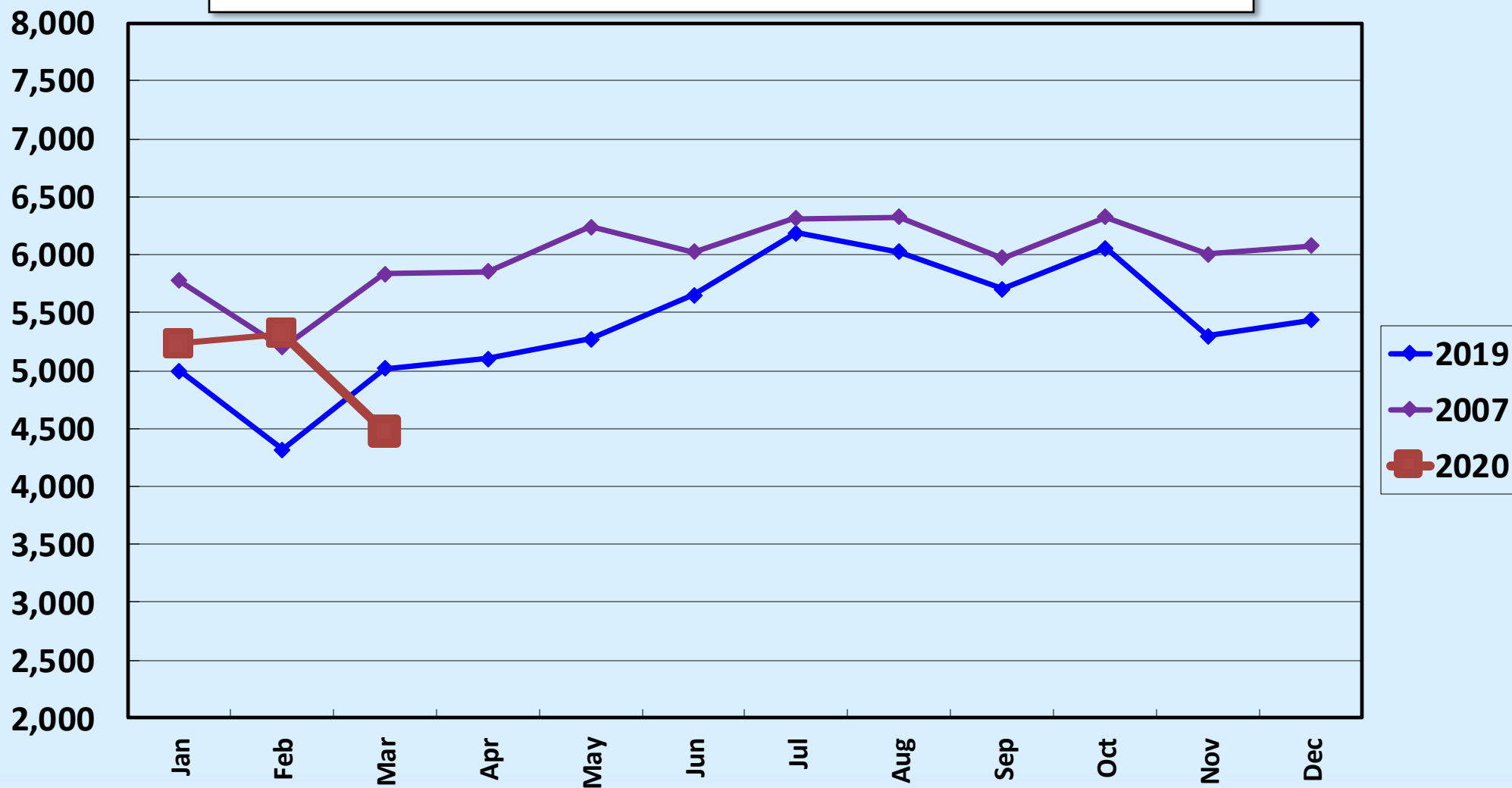
MARCH 2020: - 55.05% MOM; + 10.12% FYTD; - 7.01% CYTD



Air Carrier Operations

All Airlines

MARCH 2020: - 10.83% MOM; + 14.19% FYTD; + 4.86% CYTD



Load Factor: March 2020 v. March 2019

	March 2020		March 2019	
Alaska	Seats: 37,374 Pax: 16,508	Load Factor: 44.17%	Seats: 57,468 Pax: 44,415	Load Factor: 77.29%
American	Seats: 32,768 Pax: 17,930	Load Factor: 54.72%	Seats: 18,028 Pax: 15,332	Load Factor: 85.05%
Delta	Seats: 24,116 Pax: 11,826	Load Factor: 49.04%	Seats: 15,200 Pax: 13,355	Load Factor: 87.86%
JetBlue	Seats: 25,254 Pax: 10,924	Load Factor: 43.26%	Seats: 26,400 Pax: 20,661	Load Factor: 78.26%

Load Factor: March 2020 v. March 2019

March 2020

March 2019

Southwest

Seats: 410,325
Pax: 133,537

Load Factor:
32.54%

Seats: 469,576
Pax: 342,758

Load Factor:
72.99%

Spirit

Seats: 9,860
Pax: 4,765

Load Factor:
48.33%

Seats: 0
Pax: 0

Load Factor:
N/A

United

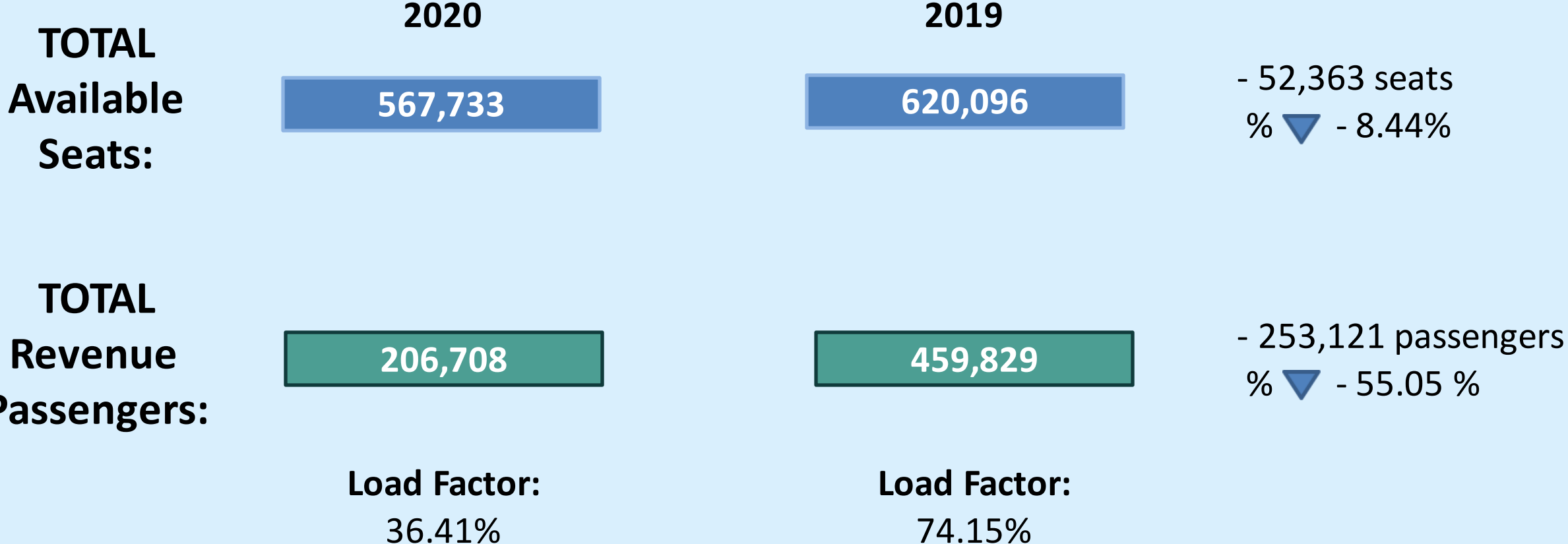
Seats: 28,036
Pax: 11,218

Load Factor:
40.01%

Seats: 33,424
Pax: 23,308

Load Factor:
69.73%

Load Factor: March 2020 v. March 2019



Regional Airport Passenger Statistics

March 2020

BUR

2020	206,708
2019	459,829
%▼	- 55.05%

ONT

2020	233,776
2019	436,701
%▼	- 46.47%

SNA

2020	337,981
2019	923,403
%▼	- 63.40%

LAX

2020	3,287,411
2019	7,368,798
%▼	- 55.39%

LGB

2020	*
2019	250,698
%▼	%

**Data not available as of 5/11/2020*

