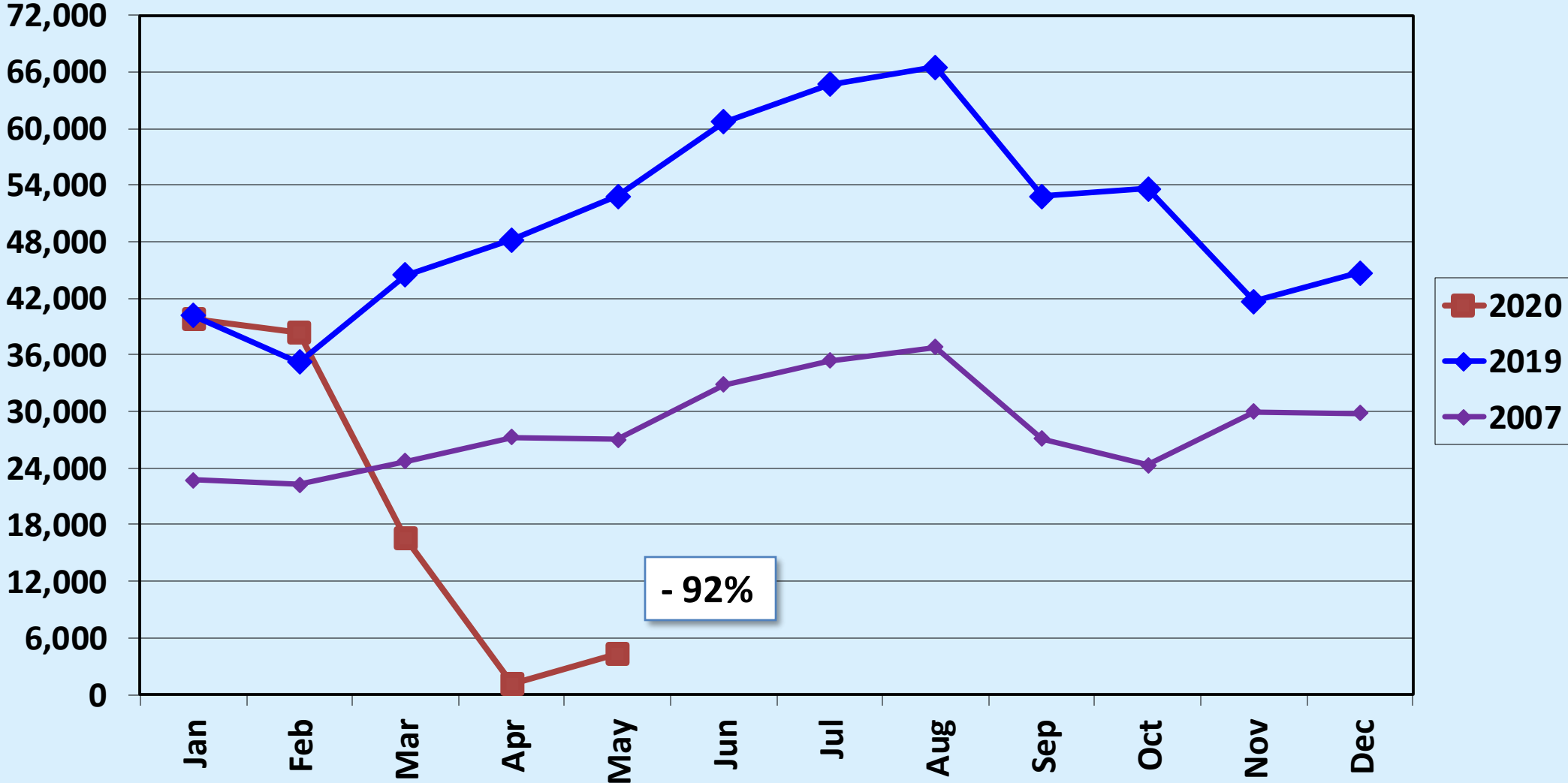




Passenger Statistics Report May 2020

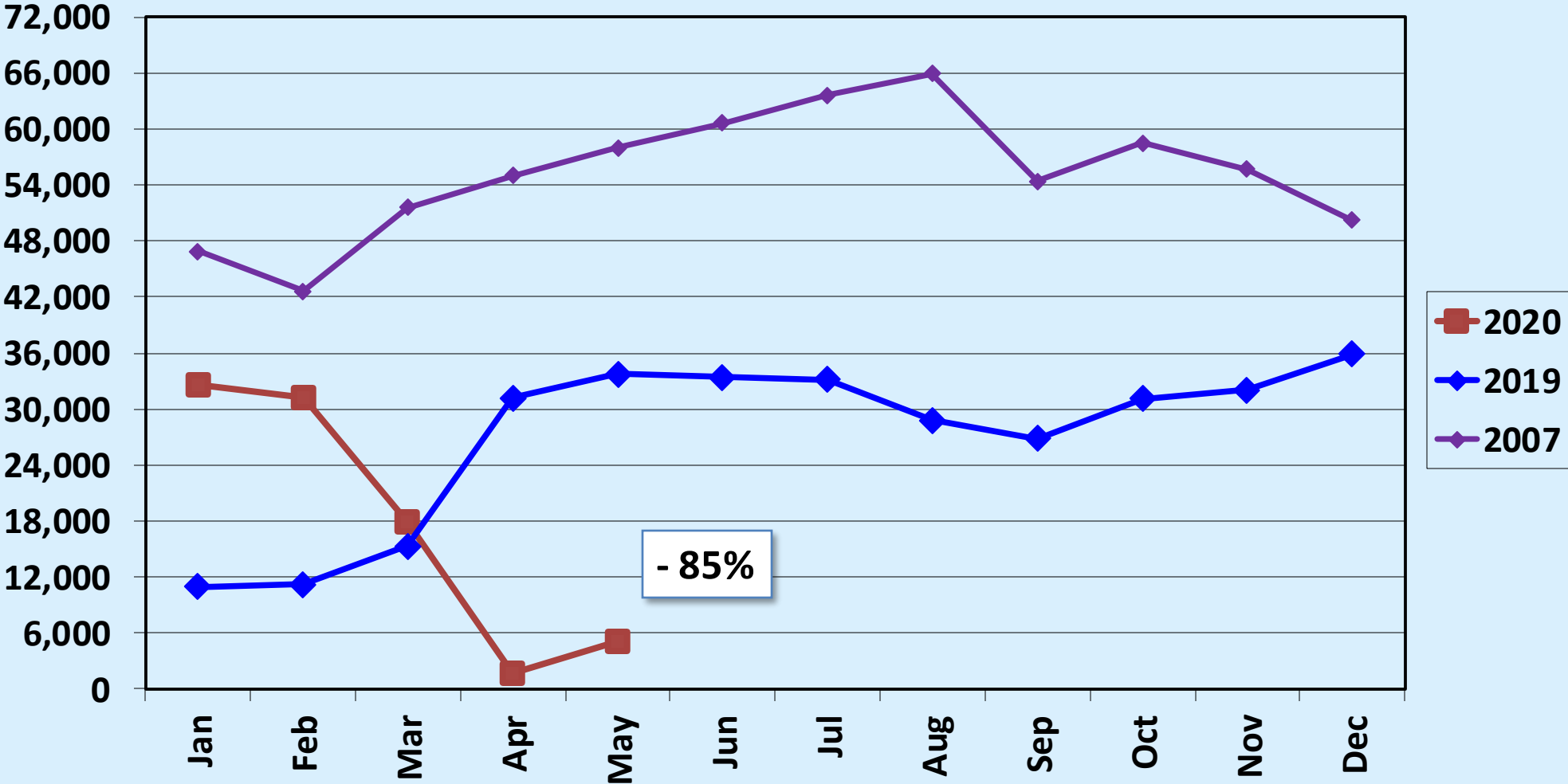
Presented to
Burbank-Glendale-Pasadena
Airport Authority
July 20, 2020

Revenue Passengers Alaska Airlines

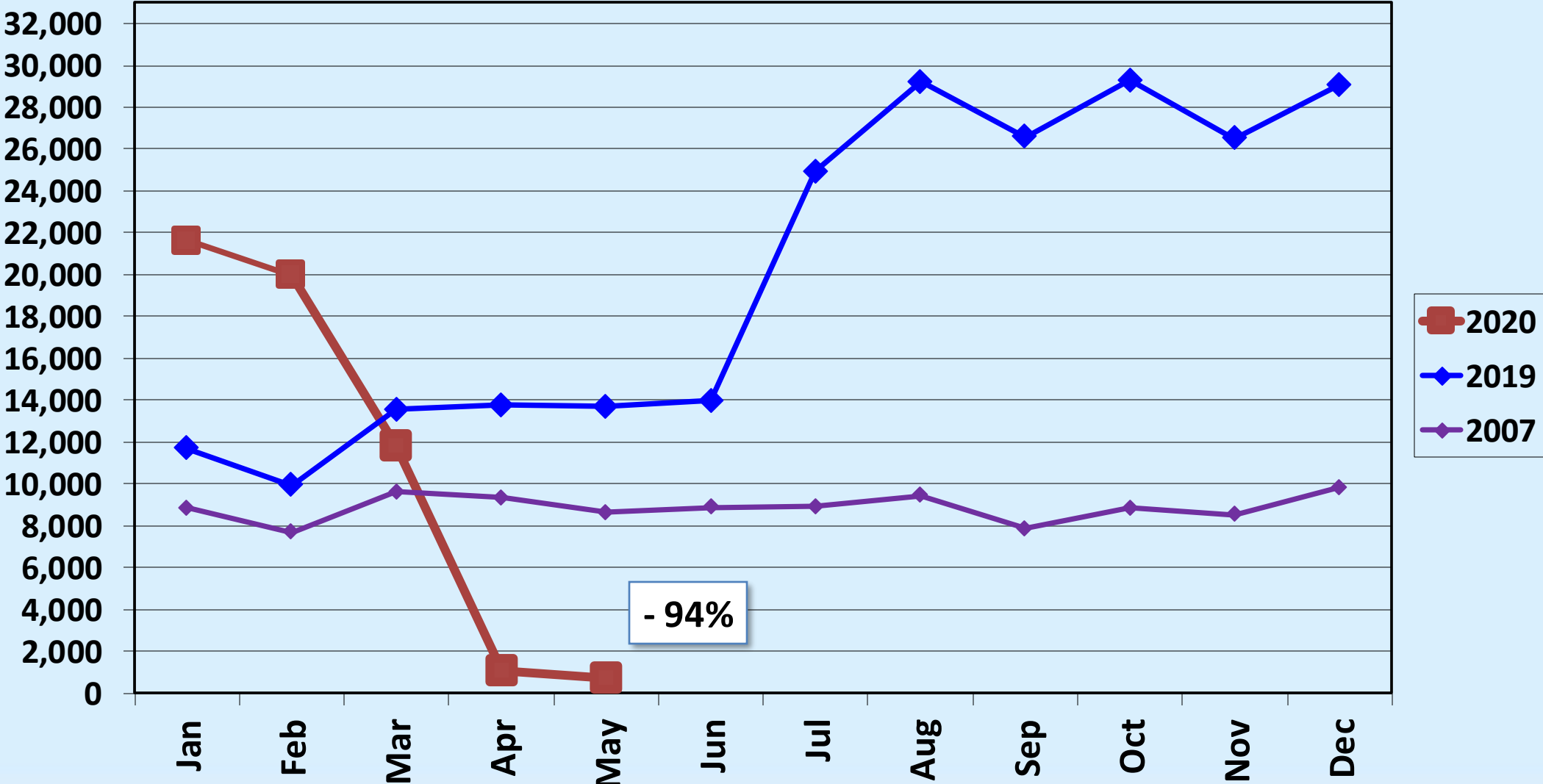


Revenue Passengers American Airlines

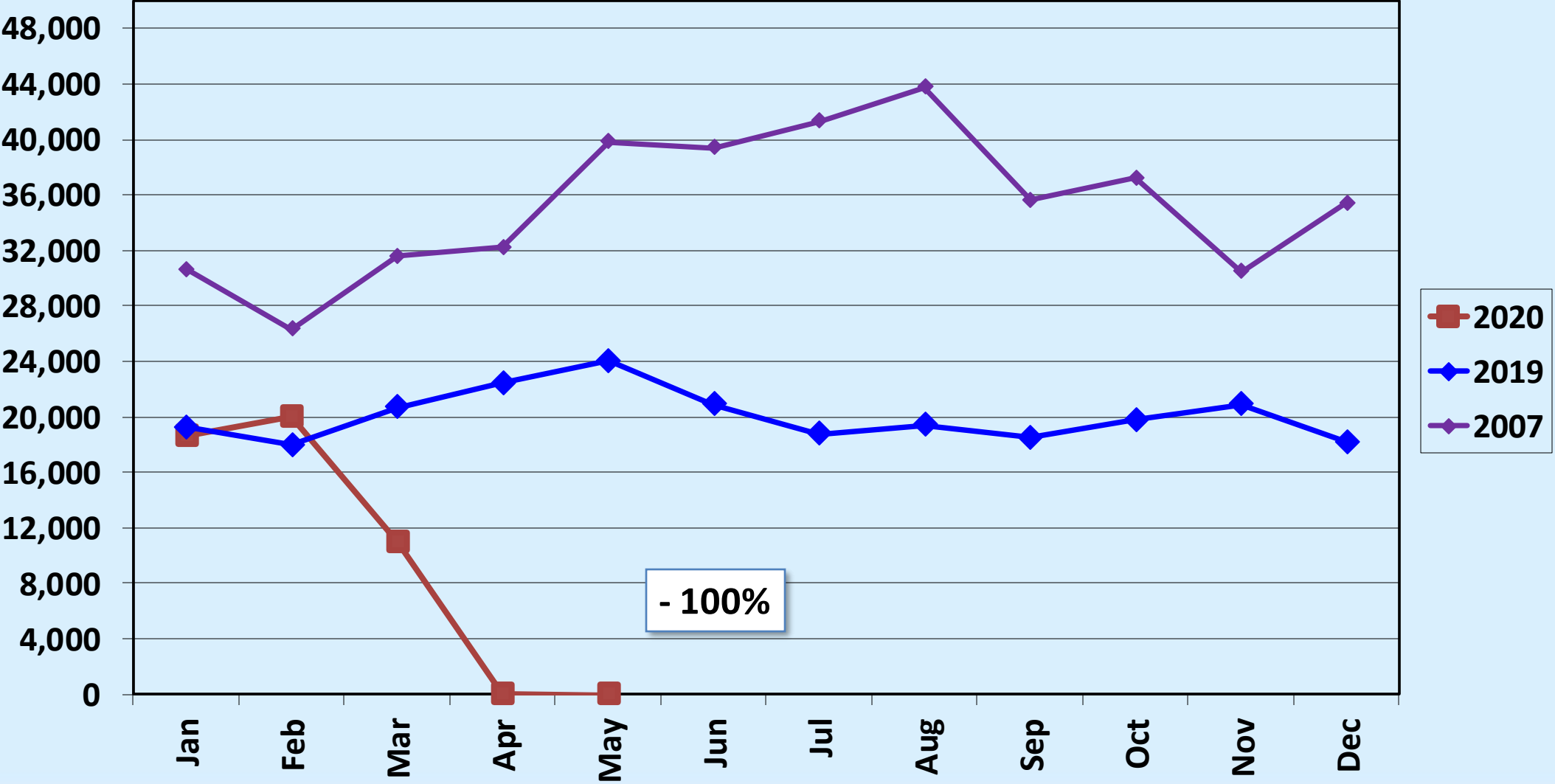
Note: For the purposes of this comparison, American Airlines in CY 2007 includes US Airways/America West.



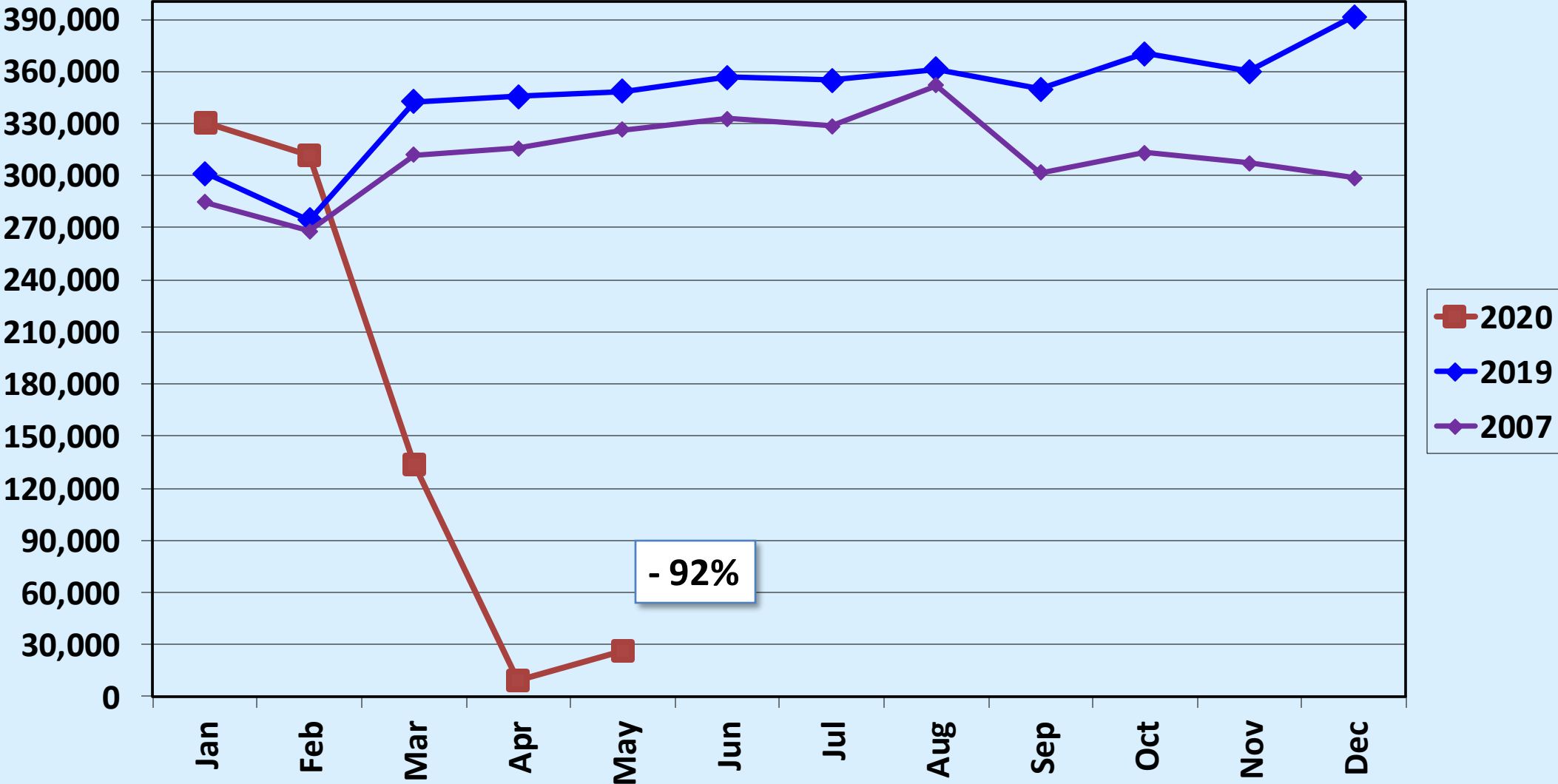
Revenue Passengers Delta Air Lines



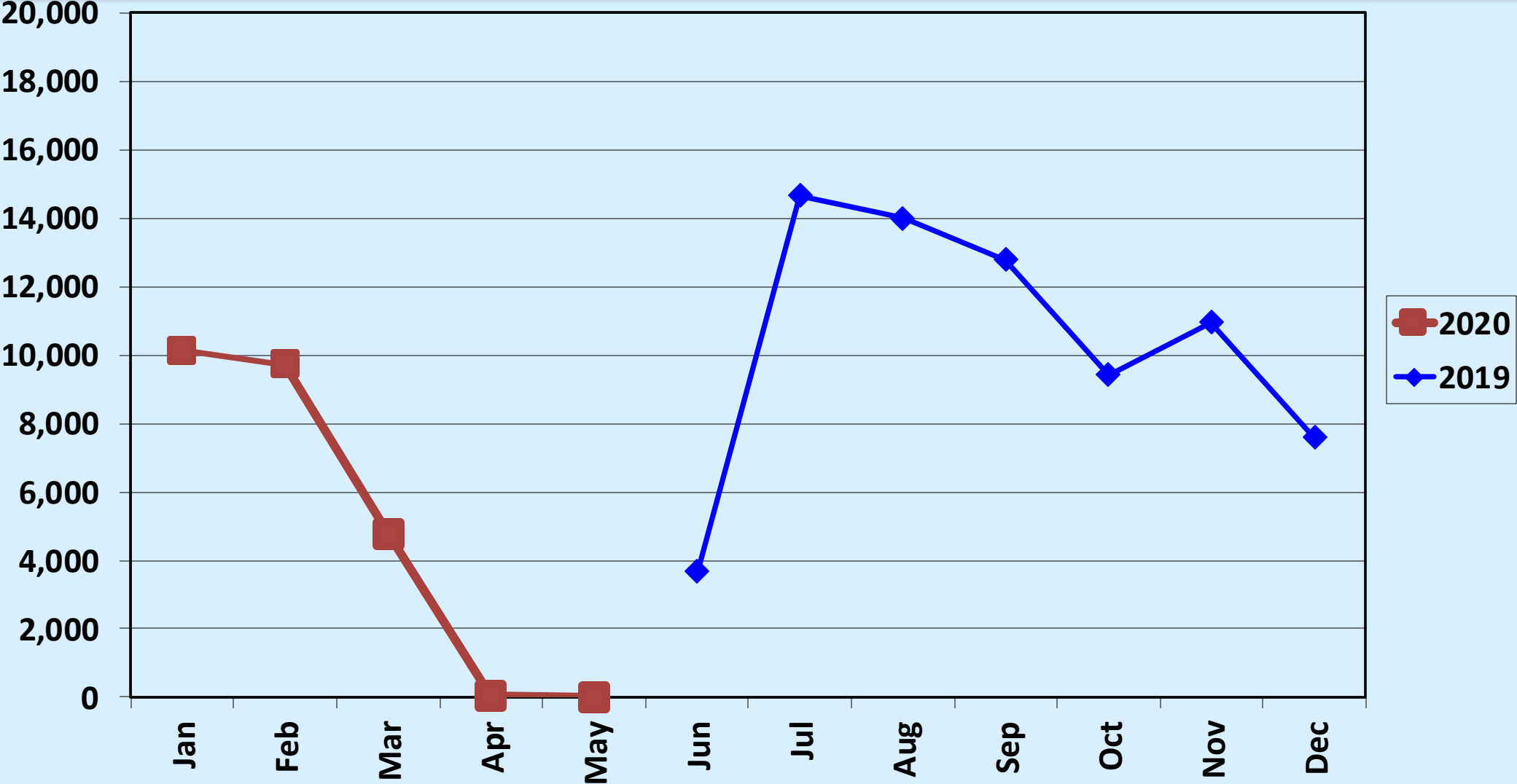
Revenue Passengers Jetblue Airways



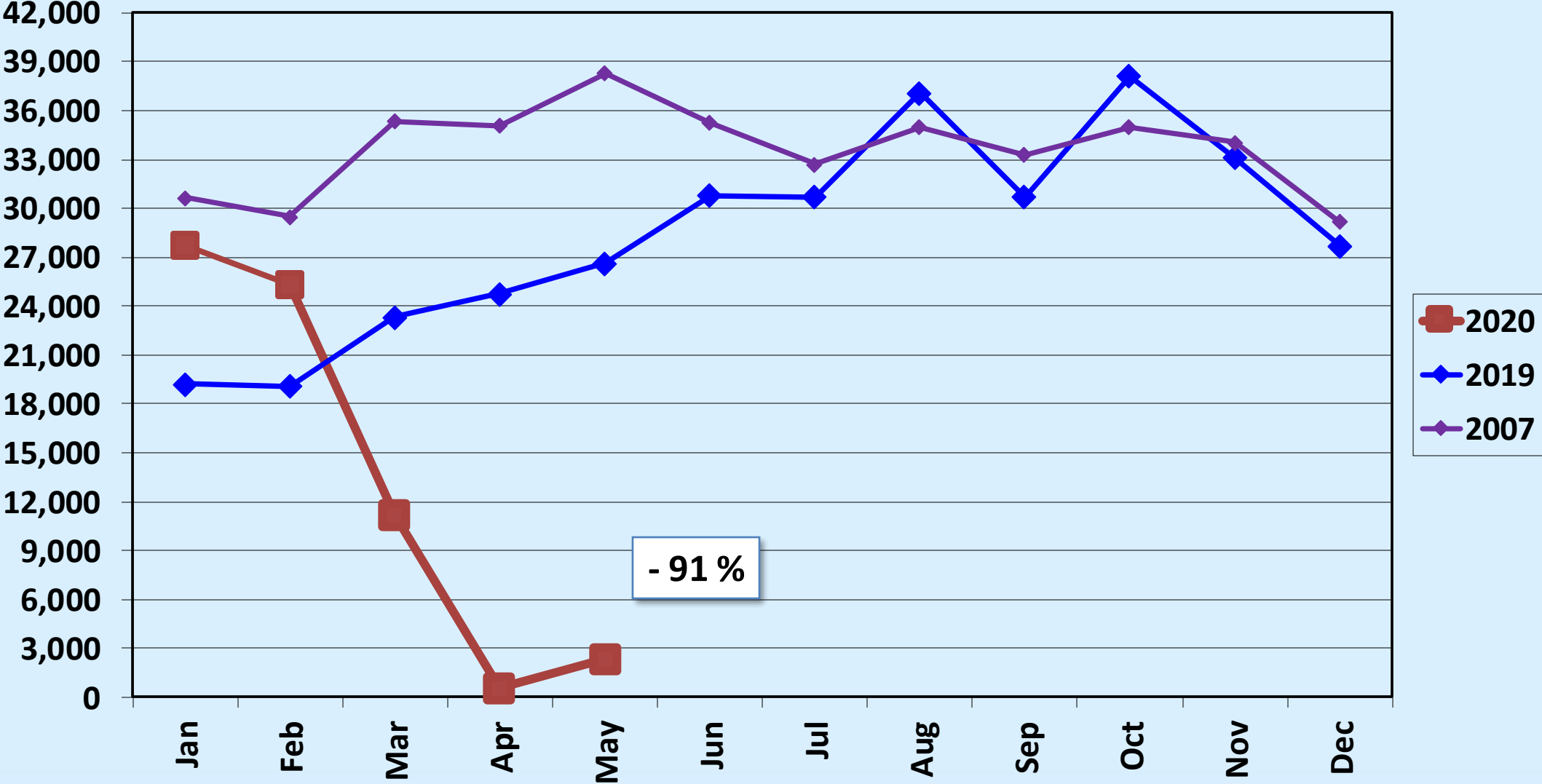
Revenue Passengers Southwest Airlines



Revenue Passengers Spirit Airlines

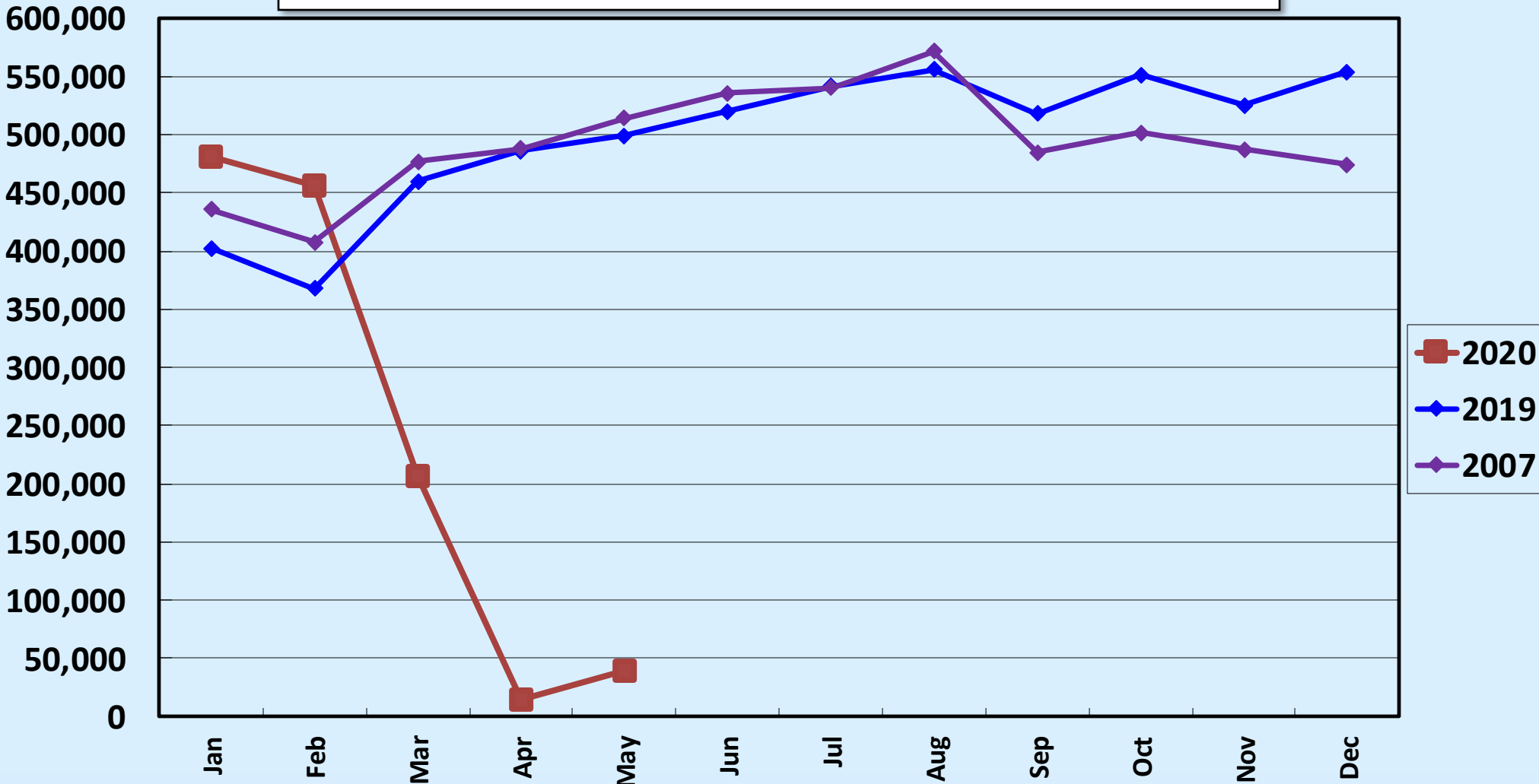


Revenue Passengers United Airlines



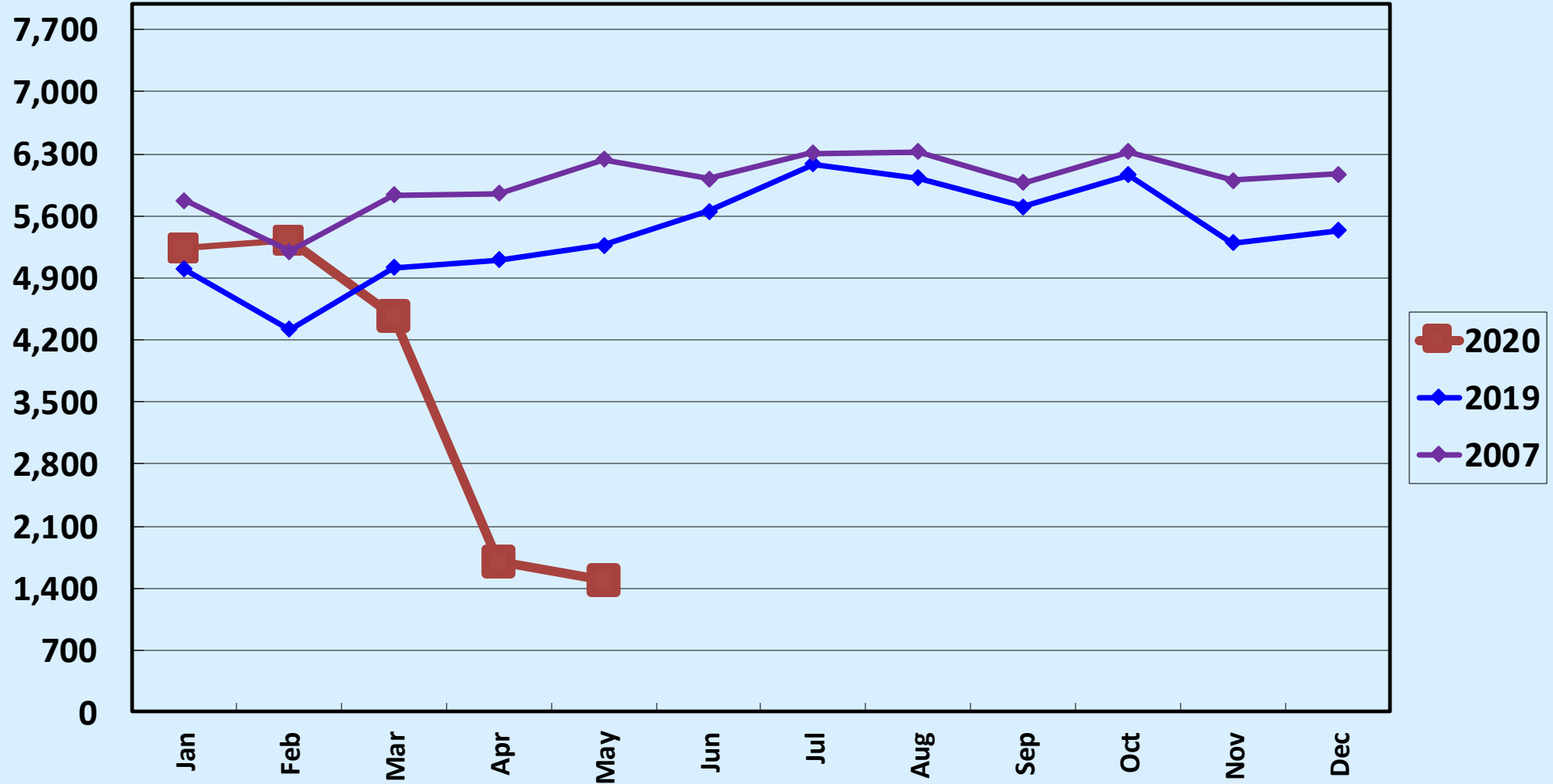
Revenue Passengers All Airlines

MAY 2020: - 92.12% MOM; - 10.63% FYTD; - 45.95% CYTD



Air Carrier Operations All Airlines

MAY 2020: - 71.57% MOM; - 1.86% FYTD; - 26.26% CYTD



Load Factor: May 2020 v. May 2019

	May 2020			May 2019	
Alaska	Seats: 10,640	Pax: 4,353	Load Factor: 40.91%	Seats: 64,344	Load Factor: 82.04%
American	Seats: 10,336	Pax: 5,173	Load Factor: 50.05%	Seats: 38,894	Load Factor: 86.74%
Delta	Seats: 3,344	Pax: 757	Load Factor: 22.64%	Seats: 16,720	Load Factor: 81.90%
JetBlue	Seats: 0	Pax: 0	Load Factor: N/A	Seats: 26,400	Load Factor: 91.00%

Load Factor: May 2020 v. May 2019

May 2020

May 2019

Southwest

Seats: 135,133

Pax: 26,668

Load Factor:
19.73%

Seats: 466,886

Pax: 348,408

Load Factor:
74.62%

Spirit

Seats: 0

Pax: 0

Load Factor:
N/A

Seats: 0

Pax: 0

Load Factor:
N/A

United

Seats: 10,490

Pax: 2,379

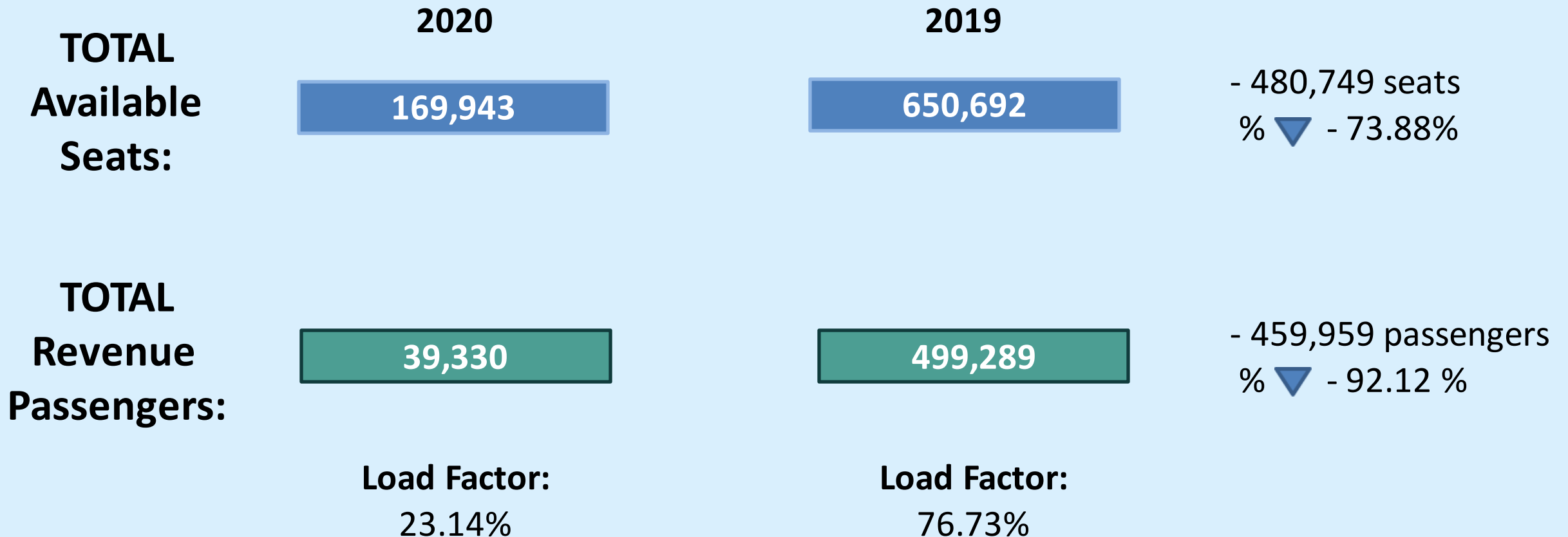
Load Factor:
22.68%

Seats: 37,448

Pax: 26,642

Load Factor:
71.14%

Load Factor: May 2020 v. May 2019



Regional Airport Passenger Statistics

May 2020

BUR

2020	39,330
2019	499,289
%▼	- 92.12%

ONT

2020	70,296
2019	475,400
%▼	- 85.21%

SNA

2020	82,342
2019	942,680
%▼	- 91.27%

LAX

2020	575,728
2019	7,613,486
%▼	- 92.44%

LGB

2020	11,566
2019	305,277
%▼	- 96.21%

AIR CARRIER OPERATIONS

ALL AIRLINES

BREAKDOWN - MONTHLY TOTALS

	JAN	FEB	MAR	APR	MAY	JUN	JUL	AUG	SEP	OCT	NOV	DEC
2020	5,231	5,319	4,472	1,695	1,498							
2019	4,996	4,315	5,015	5,104	5,270							
2018	4,646	4,163	4,673	4,665	4,820							
2007	5,777	5,203	5,834	5,857	6,237							