

Bob Hope Airport

REVENUE PASSENGERS	December			January - December		
	2014	2013	% Change	2014	2013	% Change
Signatory Airlines						
Alaska Airlines	32,976	32,692	0.87%	391,134	369,223	5.93%
US Airways	16,445	15,958	3.05%	201,573	192,945	4.47%
JetBlue Airways	8,712	7,759	12.28%	96,733	99,977	-3.24%
SeaPort Airlines	510	210	142.86%	3,529	1,494	136.21%
Southwest Airlines	253,358	252,668	0.27%	2,882,290	2,867,620	0.51%
Delta Air Lines	5,597	6,277	-10.83%	81,718	80,421	1.61%
United Airlines	15,192	19,314	-21.34%	204,202	232,710	-12.25%
Other Scheduled Carriers						
Federal Express	0	0		0	0	
United Parcel Service	0	0		0	0	
Charter/Contract Carriers						
AirNet Express	0	0		0	0	
Ameriflight	0	0		0	0	
Total Revenue Passengers						
	332,790	334,878	-0.62%	3,861,179	3,844,390	0.44%
Deplaned	167,492	169,740	-1.32%	1,929,231	1,924,324	0.25%
Enplaned	165,298	165,138	0.10%	1,931,948	1,920,066	0.62%
MAIL (lbs.)						
United Parcel Service	43,524	107,329	-59.45%	2,646,951	3,619,545	-26.87%
Total Mail						
	43,524	107,329	-59.45%	2,646,951	3,619,545	-26.87%
Deplaned	0	51,230	-100.00%	2,315,934	3,154,134	-26.57%
Enplaned	43,524	56,099	-22.42%	331,017	465,411	-28.88%

Bob Hope Airport

AIR CARGO (lbs.)	December			YTD 2014		
	2014	2013	% Change	2014	2013	% Change
Signatory Airlines						
Alaska Airlines	812	203	300.00%	4,489	5,492	-18.26%
US Airways	152	0		9,500	9,747	-2.53%
JetBlue Airways	0	0		0	0	
SeaPort Airlines	0	0		0	0	
Southwest Airlines	165,333	149,087	10.90%	2,211,626	2,396,100	-7.70%
Delta Air Lines	0	0		0	0	
United Airlines	0	0		0	0	
Other Scheduled Carriers						
Federal Express	4,914,743	4,747,383	3.53%	54,706,676	48,734,666	12.25%
United Parcel Service	5,667,520	5,217,654	8.62%	51,612,014	49,527,279	4.21%
Charter/Contract Carriers						
AirNet Express	0	9,852	-100.00%	53,100	215,432	-75.35%
Ameriflight	318,784	367,951	-13.36%	3,966,265	4,923,053	-19.43%
Total Air Cargo	11,067,344	10,492,130	5.48%	112,563,670	105,811,769	6.38%
Inbound Cargo	5,598,393	5,346,928	4.70%	54,642,114	52,305,568	4.47%
Outbound Cargo	5,468,951	5,145,202	6.29%	57,921,556	53,685,791	7.89%

Aircraft Operation Count for the Current Period-December 2014*:

	Air Carrier	Air Taxi	General Aviation	Military Itinerant	Civil Local	Military Local
This Period-December 2014	3,764	1,283	2,444	87	1,339	26
January - December	46,160	14,722	33,859	756	23,001	45

Total-All Categories

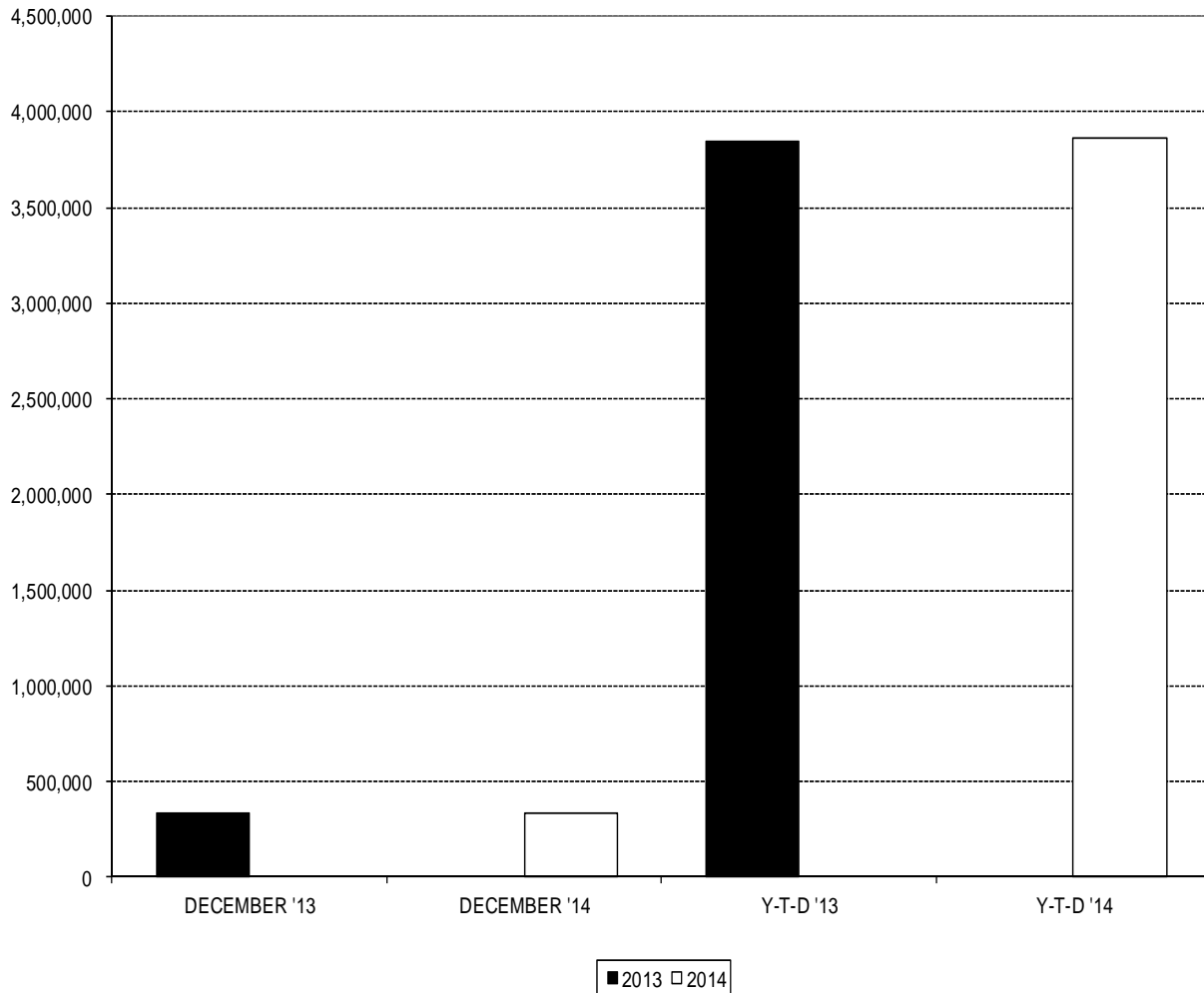
This Period-December 2014	8,943
January - December	118,543

* Source: FAA Tower Daily Airport Operations Count, adjusted to show Canadair Regional Jet-200 operations as Air Carrier. Includes Bob Hope Airport arrivals/departures only; excludes aircraft that enter local air space but do not land or take off at Bob Hope Airport.

Bob Hope Airport

REVENUE PASSENGERS

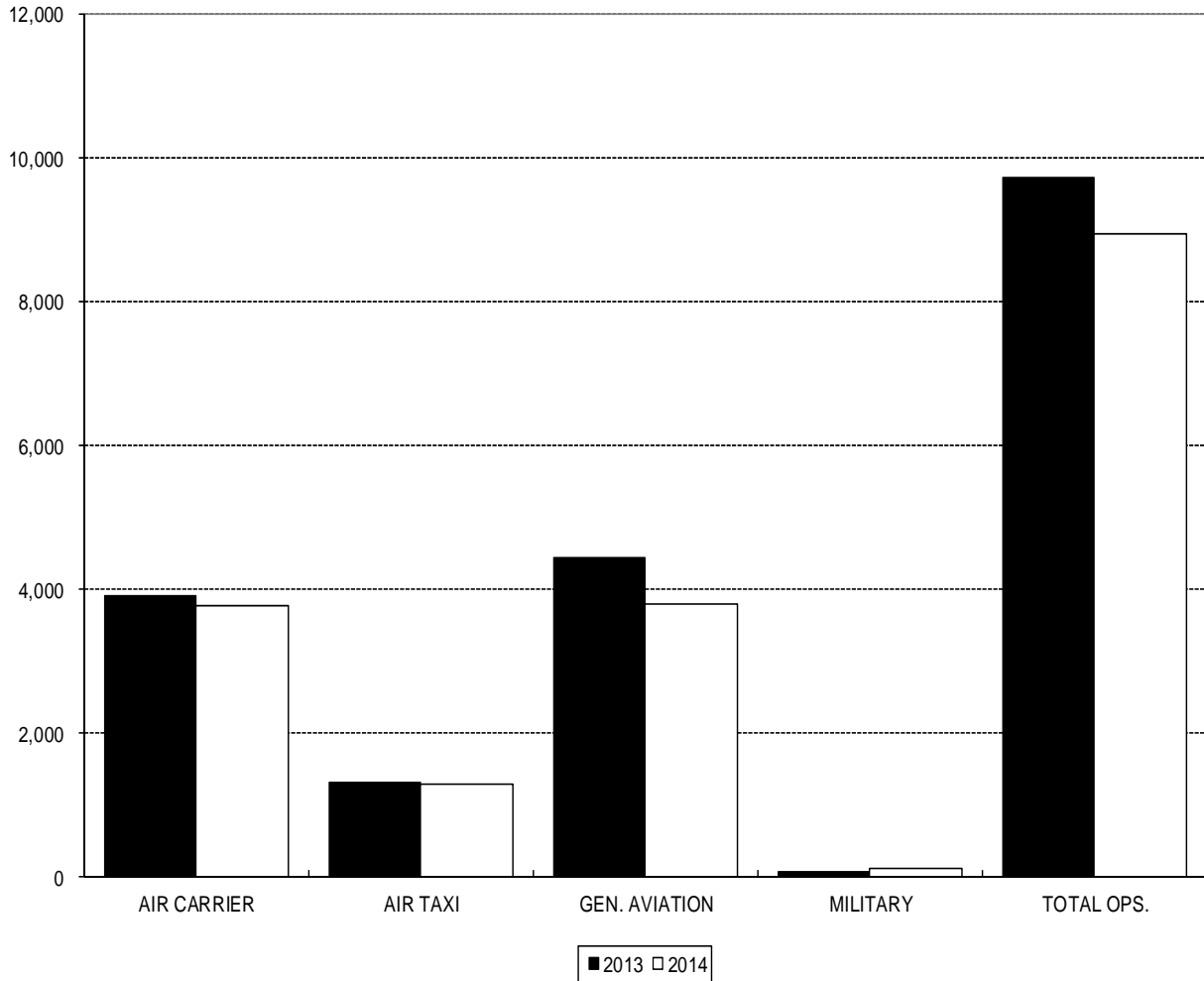
DECEMBER 2013 vs. DECEMBER 2014



	<u>Month</u>	<u>Calendar Year-to-Date</u>
December 2013	334,878	3,844,390
December 2014	332,790	3,861,179
% Change	-0.62%	+0.44%

Bob Hope Airport AIRCRAFT OPERATIONS

DECEMBER 2013 vs. DECEMBER 2014



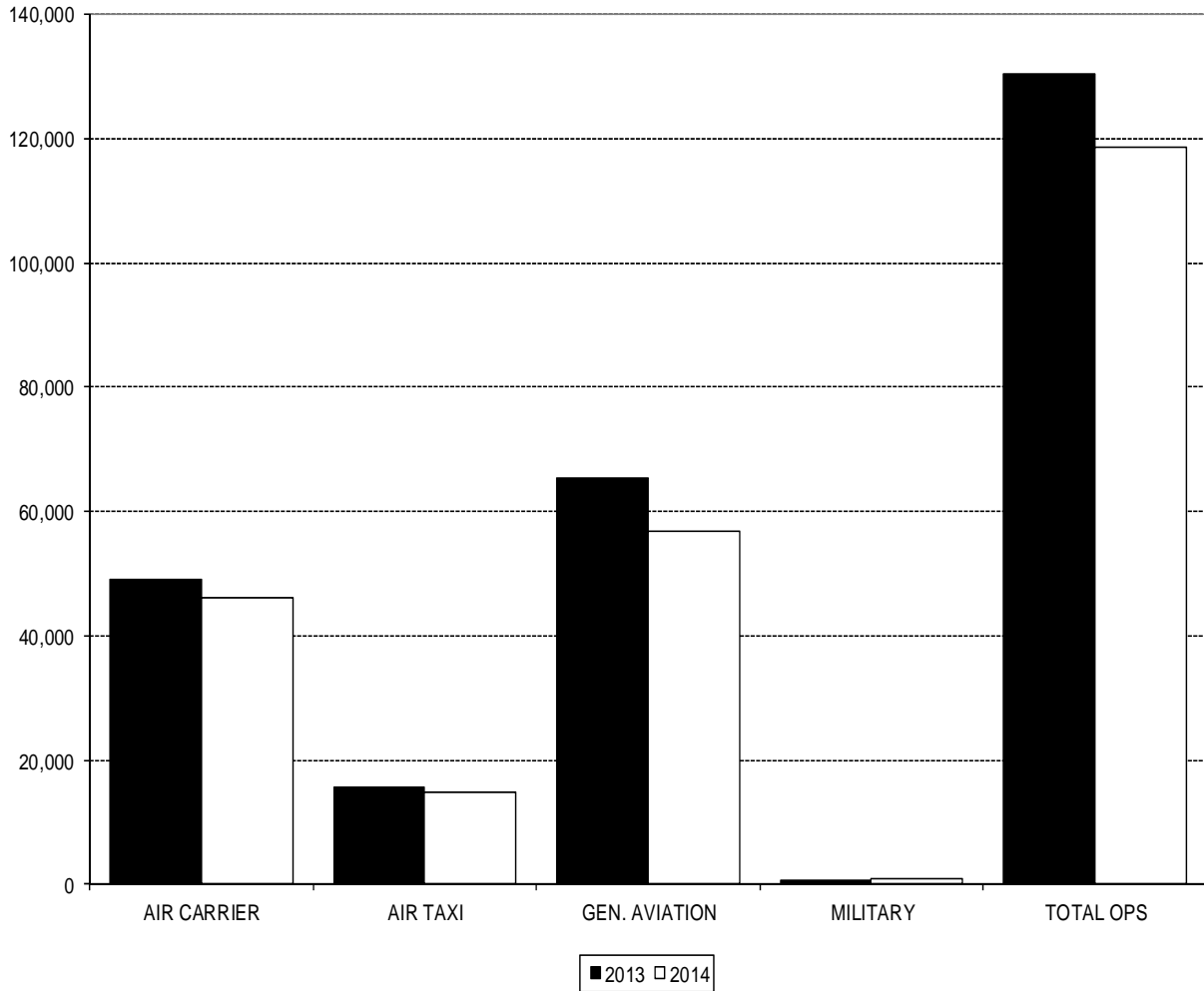
	AIR CARRIER*	AIR TAXI	GEN. AVIATION	MILITARY	TOTAL
December 2013	3,903	1,303	4,447	65	9,718
December 2014	3,764	1,283	3,783	113	8,943
% Change	-3.56%	-1.53%	-14.93%	+73.85%	-7.97%

*NOTE: AIR CARRIER column Includes Canadair Regional Jet operations. Table includes Bob Hope Airport arrivals/departures only; excludes aircraft that enter local air space but do not use Bob Hope Airport.

Bob Hope Airport

YEAR-TO-DATE AIRCRAFT OPERATIONS

JAN—DEC 2013 vs. JAN—DEC 2014



	AIR CARRIER*	AIR TAXI	GEN. AVIATION	MILITARY	TOTAL
Jan.-Dec. 2013	48,968	15,607	65,384	601	130,560
Jan.-Dec. 2014	46,160	14,722	56,860	801	118,543
% Change	-5.73%	-5.67%	-13.04%	+33.28%	-9.20%

*NOTE: AIR CARRIER column Includes Canadair Regional Jet operations. Table includes Bob Hope Airport arrivals/departures only; excludes aircraft that enter local air space but do not use Bob Hope Airport.