

DRAFT
SUBJECT TO CHANGE

ELEVATE BUR

**Replacement Passenger Terminal
Art in Public Places Requirement
Exterior Sculpture Update**

**Presented to:
Burbank-Glendale-Pasadena Airport Authority
Executive Committee**

**Jacobs Project Management Co.
Cliff Garten Studio**

March 18, 2024

Agenda

- 1.) Background
- 2.) Cliff Garten's *The Two Electras*
- 3.) Cliff Garten's *Auras*
- 4.) Design Development of *The Two Electras*
- 5.) Recommendation

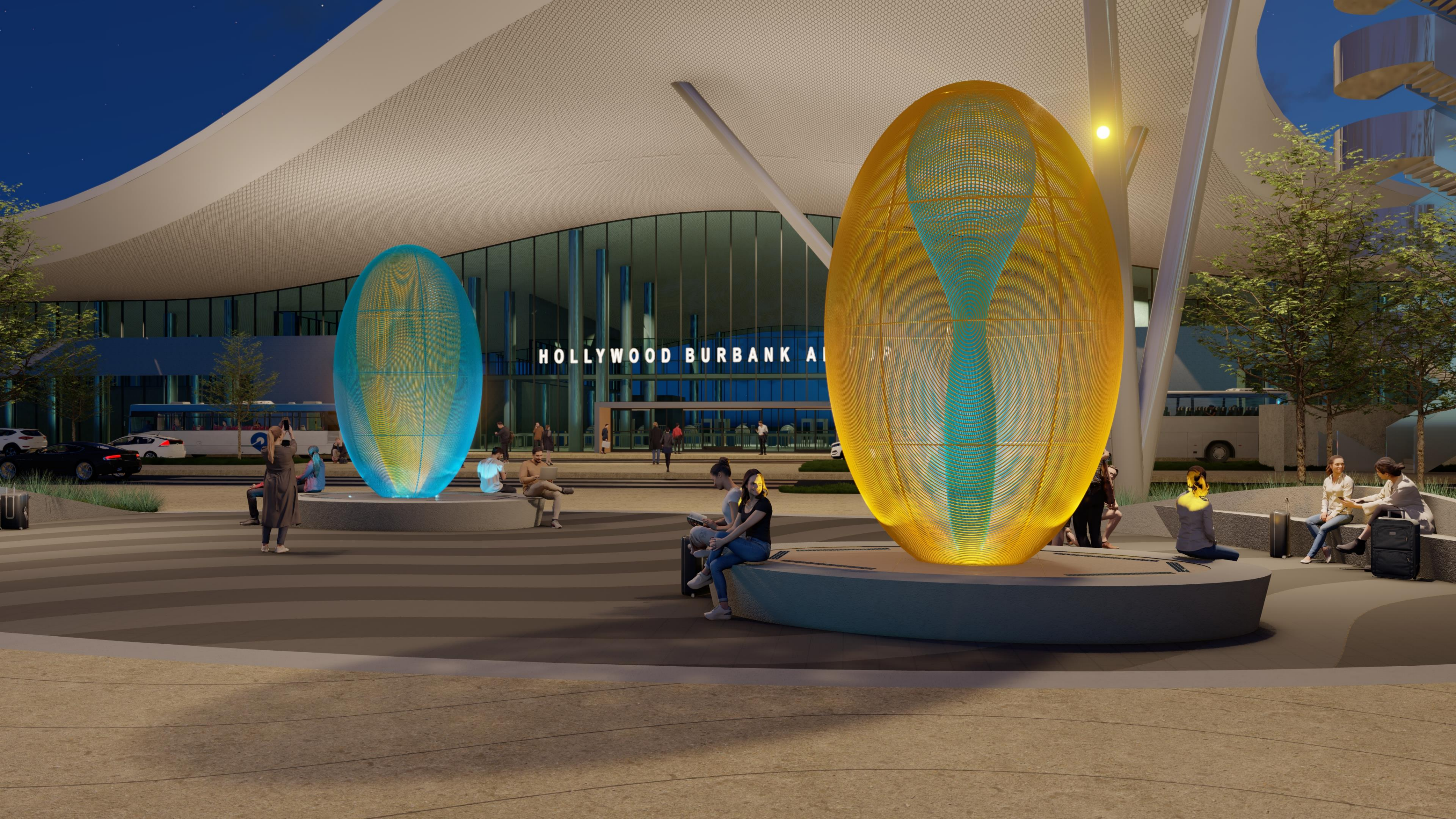
Background

- The RFP for the exterior artwork stated the objective of obtaining a unique and site-specific landmark; and that the selected artist will work with HPTJV to optimize artwork integration.
- Evaluation Criteria advised proposers proposals will be scored on: (i) Artistic Merit (30 points), (ii) Appropriateness (30 points), (iii) the Work Plan & Technical Approach (30 points), and (iv) Budget (10 points)
- The selected exterior artwork of Mr. Cliff Garten has similarities with his previous work in Northern California. This is typical of his work and a common practice in the world of art.
- All of the top three proposers included samples of past work that had a level of similarity with the exterior artwork they proposed for the Replacement Passenger Terminal Plaza area.
- The Art Advisory Panel recommended Cliff Garten, Gisela Colon, Phillip K. Smith as the top three proposers.
- Cliff Garten Studio has been working with the Design Team for over a month and we are close to fully integrating the artwork to the design of the Airport Plaza.
- Cliff Garten has been refining the form of the Artwork over the past few weeks further differentiating it from the *Auras*.

BGPAA Selected Piece: *The Two Electras*

By: Cliff Garten

*Concept based on Lockheed Aircraft Designs
from 1930 – 50's*



HOLLYWOOD BURBANK AIRPORT

Past work of Cliff Garten

Entitled: *Auras*

Installed in 2015 at Google Campus, Sunnyvale, CA

Commissioned by the City of Sunnyvale Arts Commission and the Jay Paul Company



Side by Side and Component Variables

Proposed at the RPT: *The Two Electras*

Installed at the Google Campus: *Auras*

The Two Electras

(Revised version)

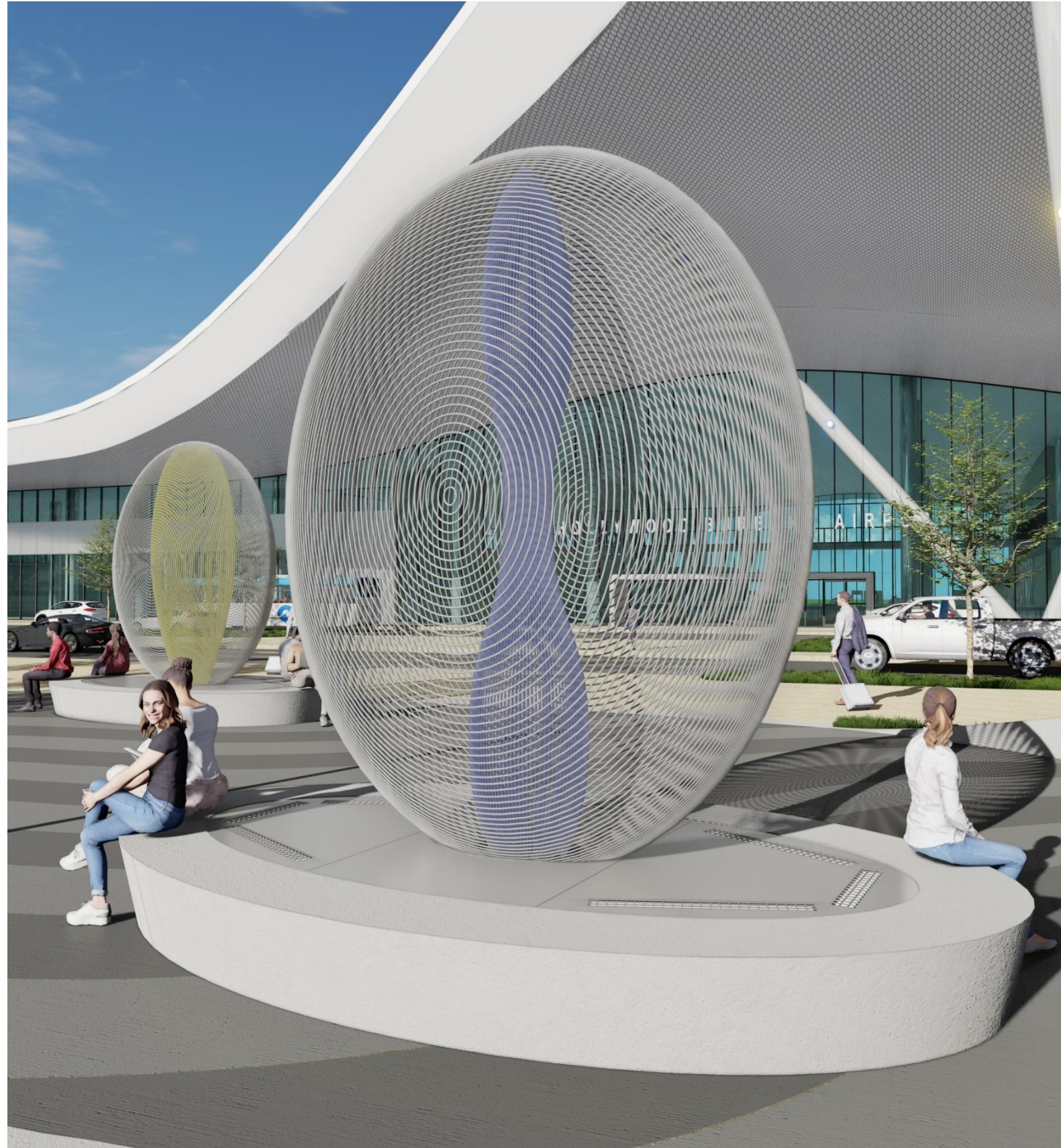


Auras



The Two Electras

(Revised version)



Auras



Design Development of
The Two Electras



Reference Images for the Concept of *The Two Electras*

There is still a beauty and a mystery to the forms that make flight possible.

A sky as pure as water bathed the stars and brought them out. -Antoine de Saint-Exupery *Wind Sand and Stars*

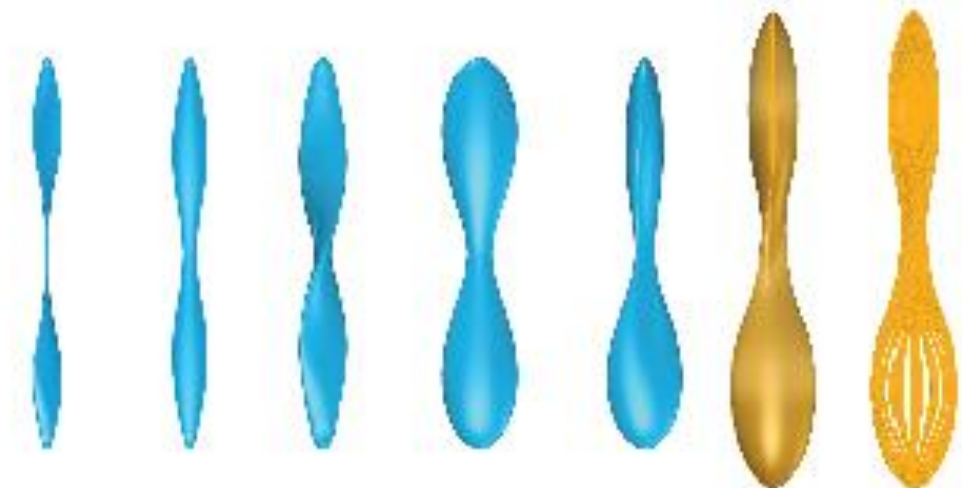


Lockheed Vega - Wheel Fairing

The volumetric shapes of aeronautical engineering developed by Lockheed at the Burbank Airport were inspirations for the shapes and the volumes of *The Two Electras*.



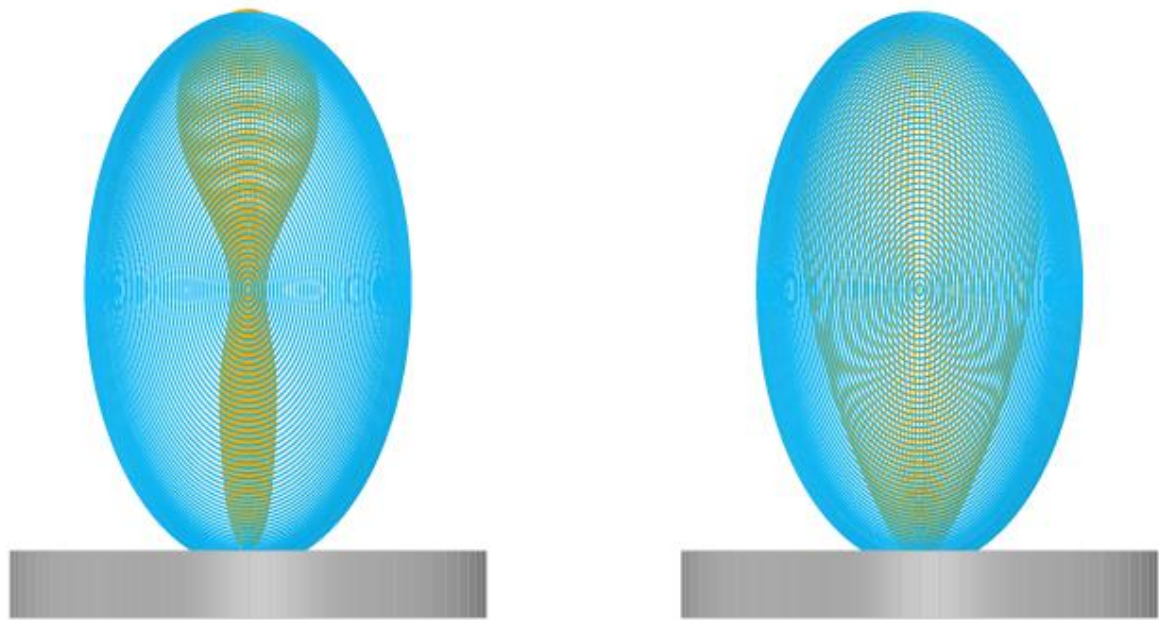
In response to the Art Deco period that preceded it, echoed in the former Burbank Airport Building, Moderne design was influenced by technology and speed in the designs of automobiles and airplanes. The *Two Electras* take these streamlined forms to another more ethereal order of form, by introducing transparency and light into their volumes.



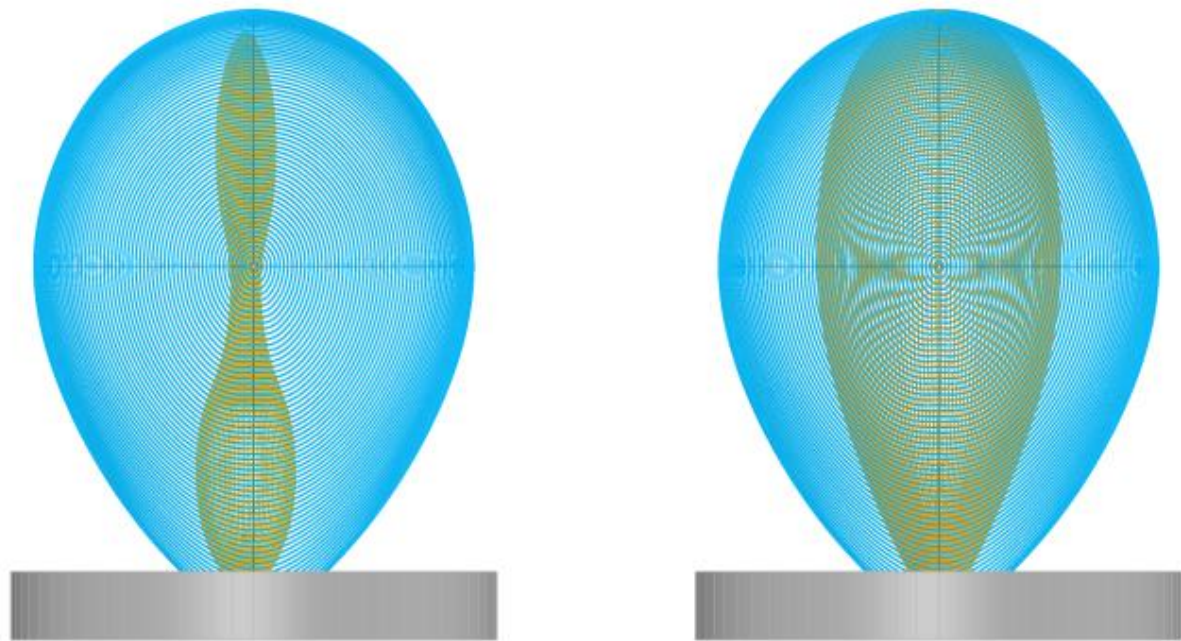
The propeller of an airplane is transfigured into a twisting inner form of one of the sculptures. Inside the oval form of the sculpture, its shape changes as the viewer moves around it.



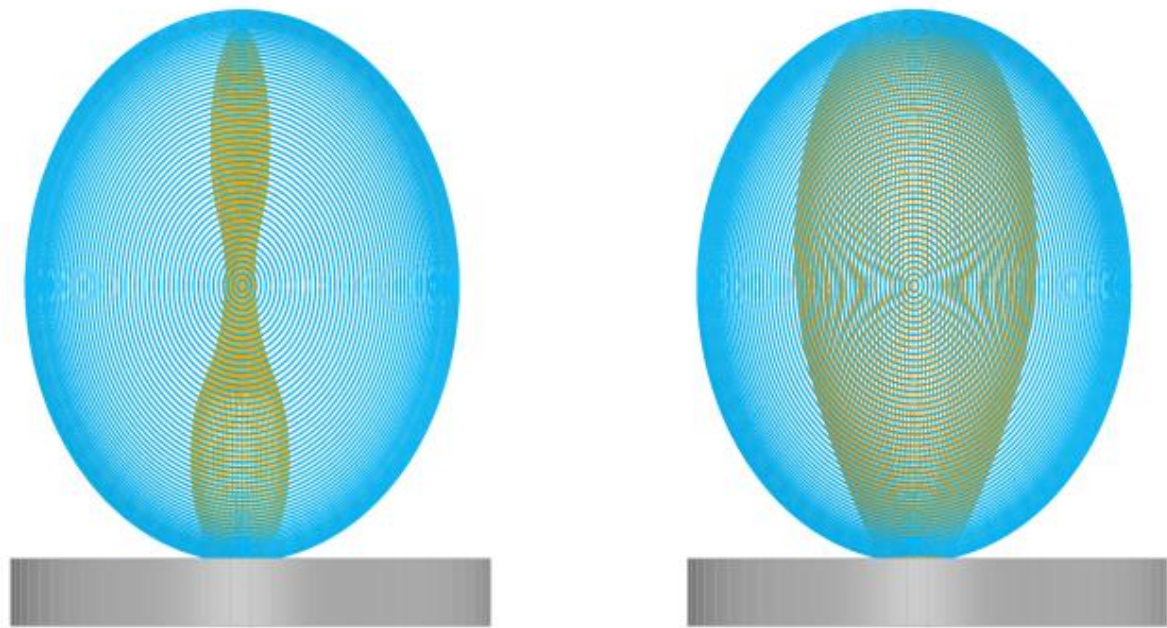
Evolution of Exterior Shape



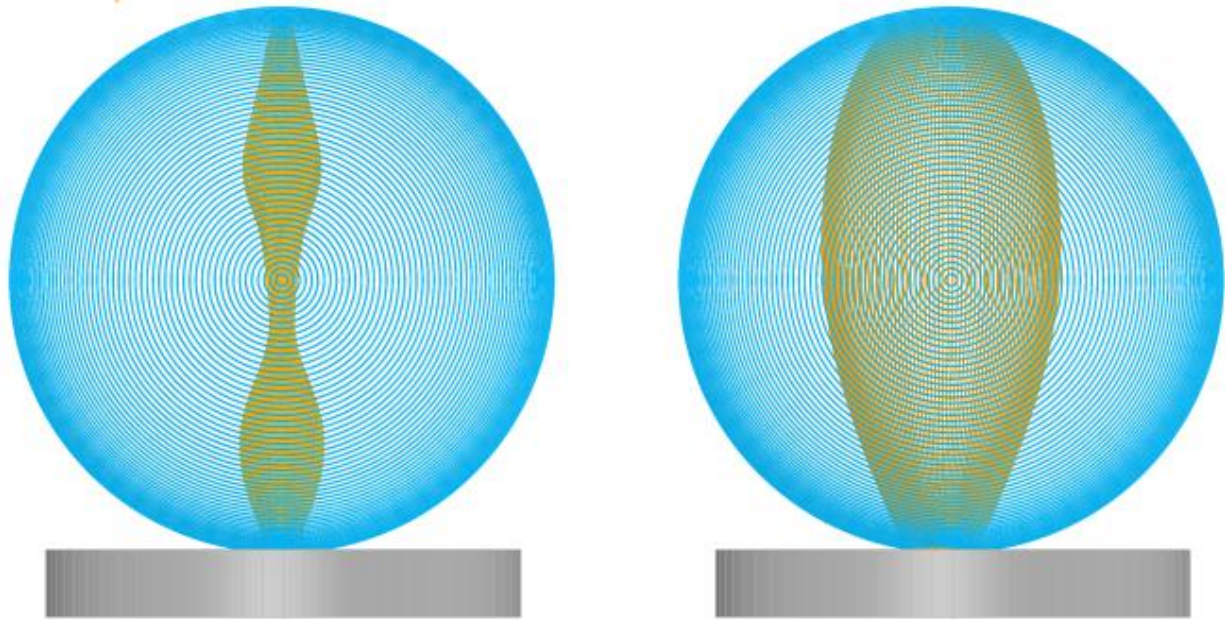
First Iteration of the Exterior Shape at the time of the proposal



Iteration #2 of the Exterior Shape presents a larger volume and allows more space for the illumination of the interior shape



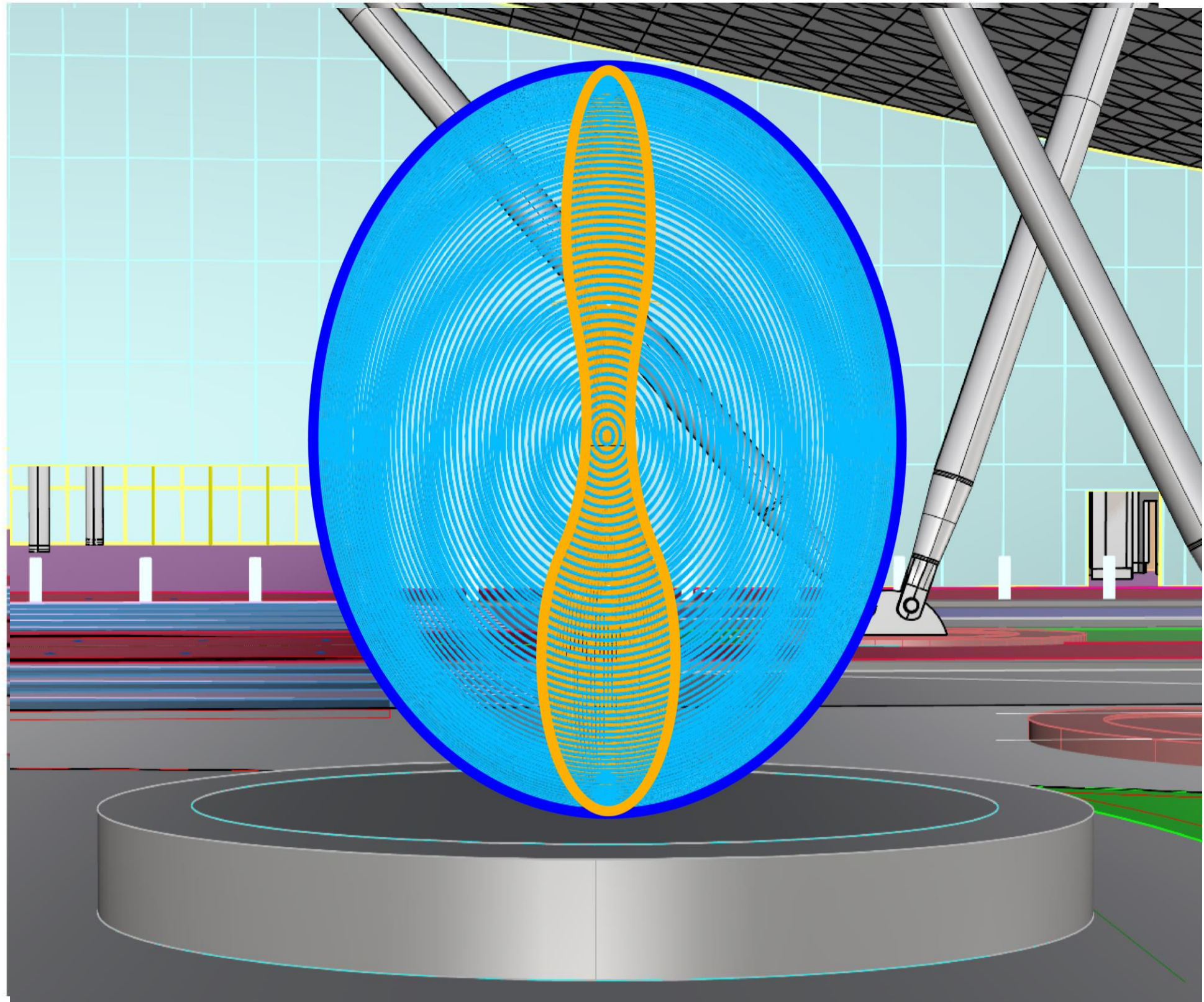
Iteration #3 (Current) of the Exterior Shape presents an Oval volume when seen from the front and an elliptical volume from the side. This is our preferred iteration so far, both technically and aesthetically



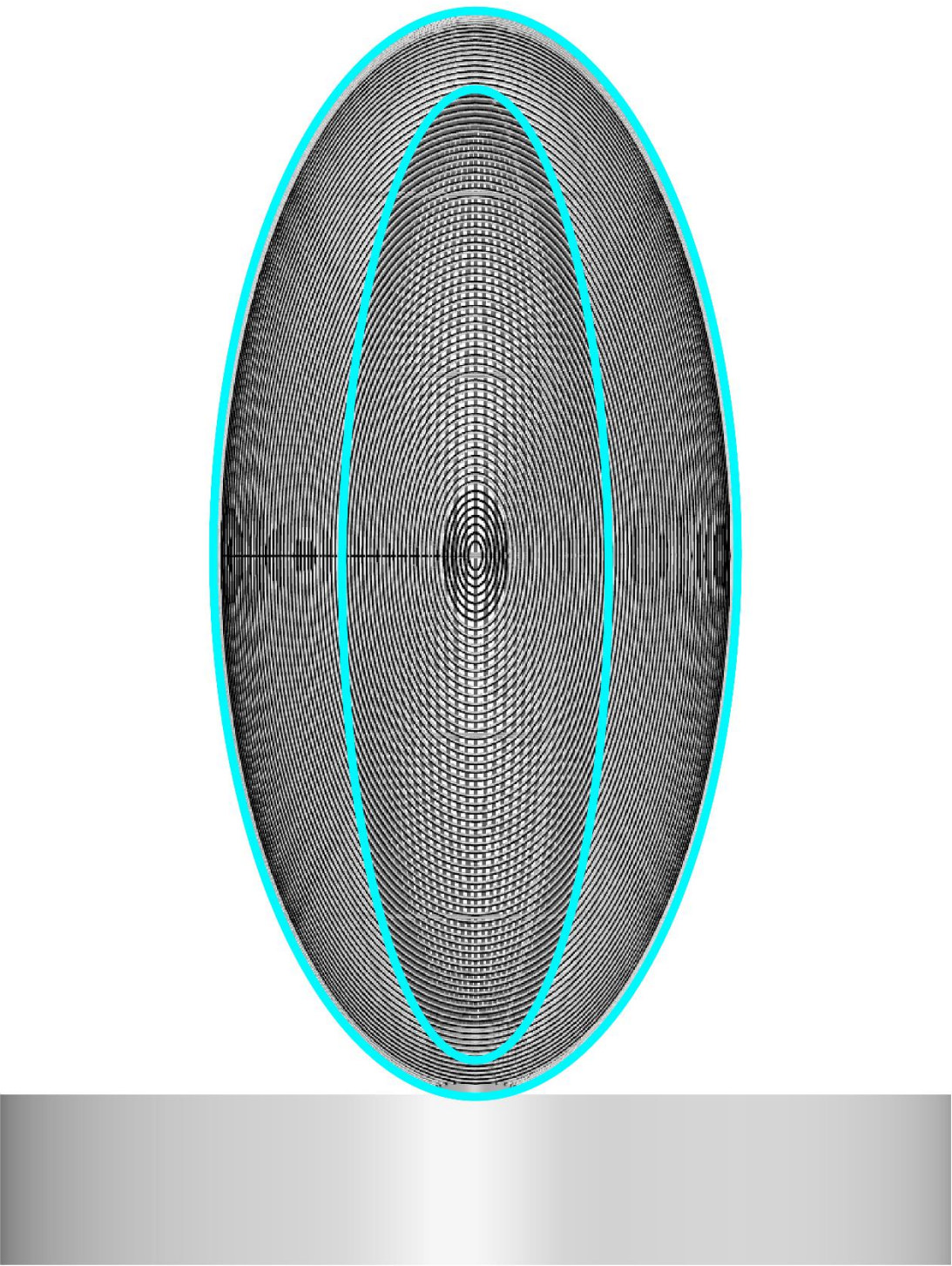
Iteration #4 of the Exterior Shape presents a circular volume when seen from the front and an elliptical volume from the side While this shape has a lot of merit it presents some issues with its illumination



Two Electras



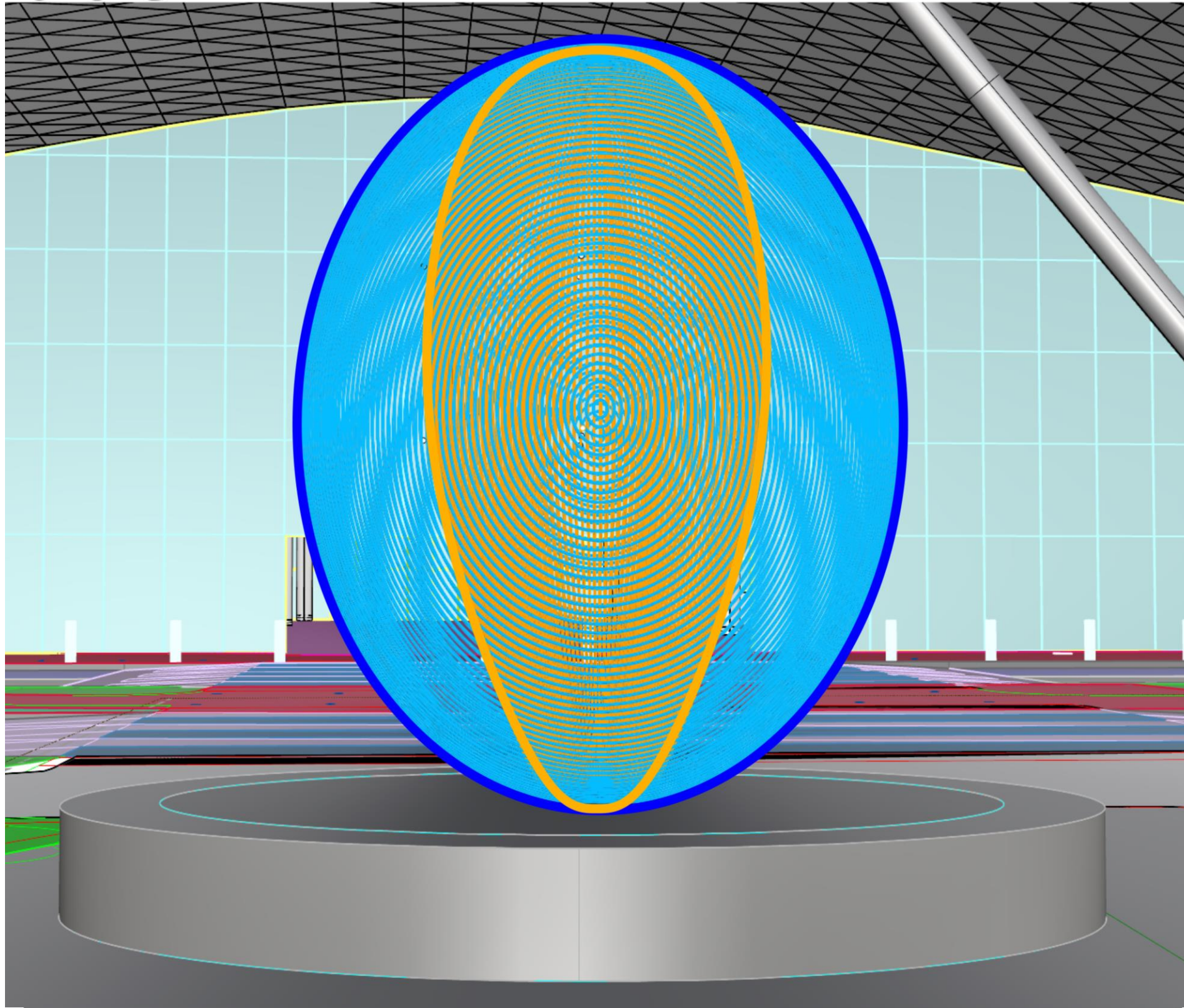
Auras



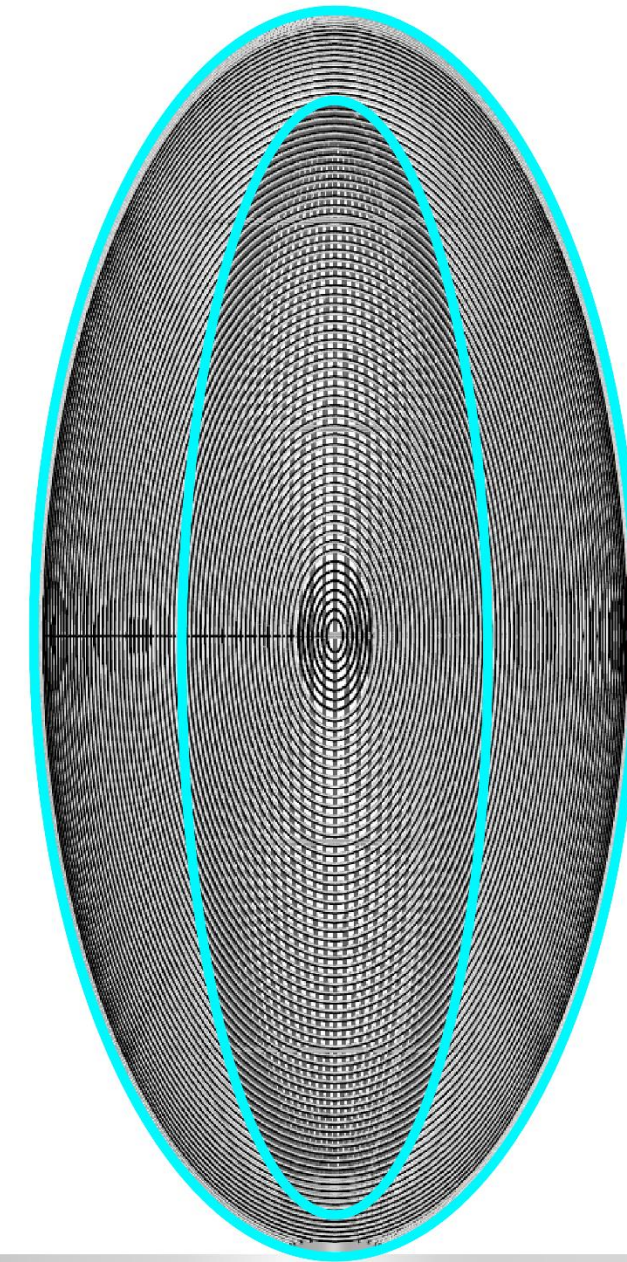
The Two Electras are unique to the Hollywood Burbank Airport and have different inner and outer forms inspired by Aeronautical Engineering. This image compares the Sunnyvale Auras to the Two Electras.



Two Electras



Auras

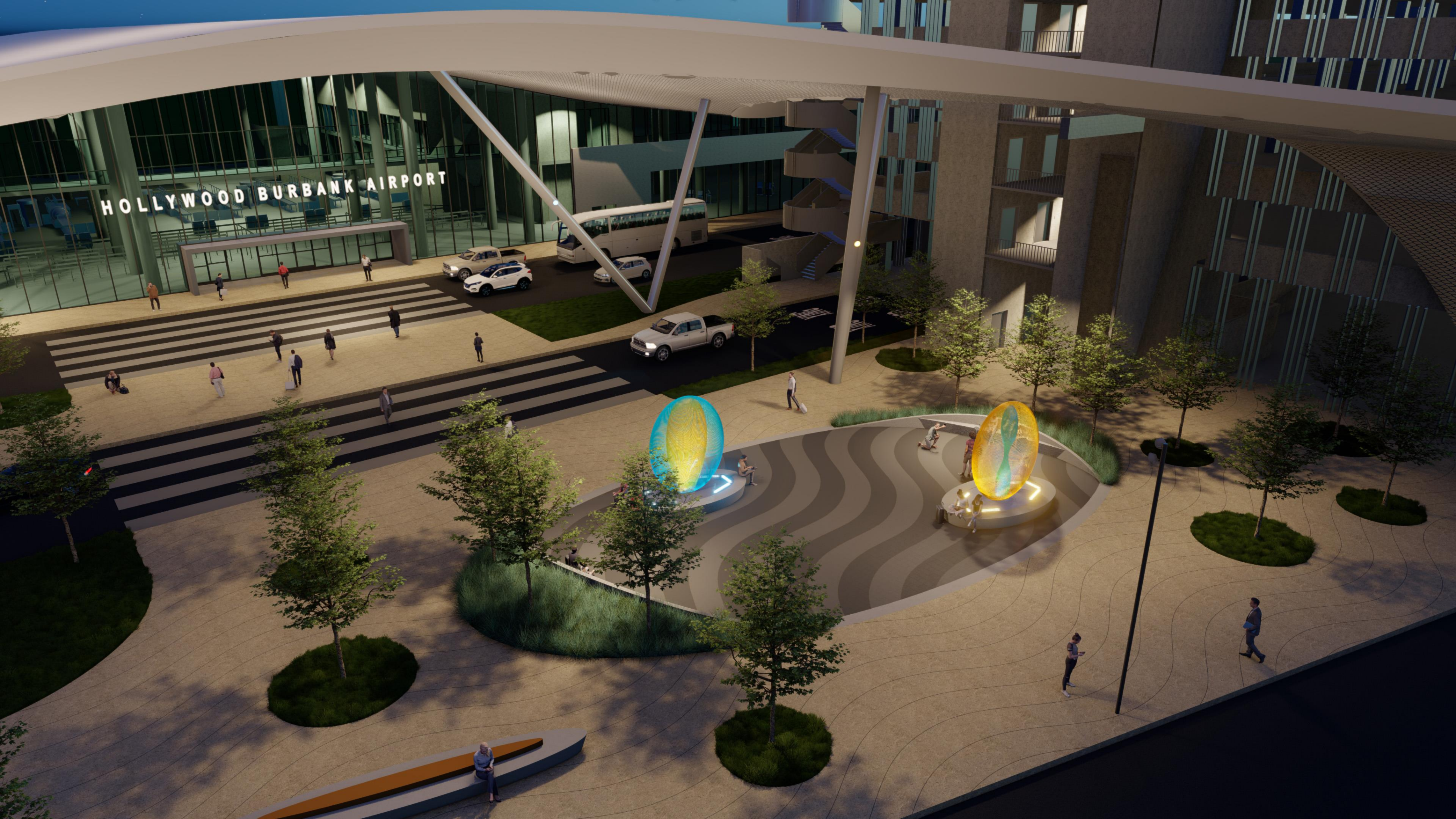


The Two Electras are unique to the Hollywood Burbank Airport and have different inner and outer forms inspired by Aeronautical Engineering. This image compares the Sunnyvale Auras to the Two Electras.



HOLLYWOOD
BURBANK
2011-21





HOLLYWOOD BURBANK AIRPORT

Recommendation

Cliff Garten's *The Two Electras*

- Work closely with the artist to ensure uniqueness of *The Two Electras*
- Continue to refine/enhance the exterior forms and interior Lockheed propeller and wing stabilizer shapes
 - Ensure the LED sequence has a distinctly unique color family unlike that of the Auras
- Add a prominently displayed didactic panel to describe the inspiration and historical relevance to Burbank's aviation history and the project site
- Maintain project schedule as to not potentially impact the October 2026 opening of the RPT and associated facilities.

